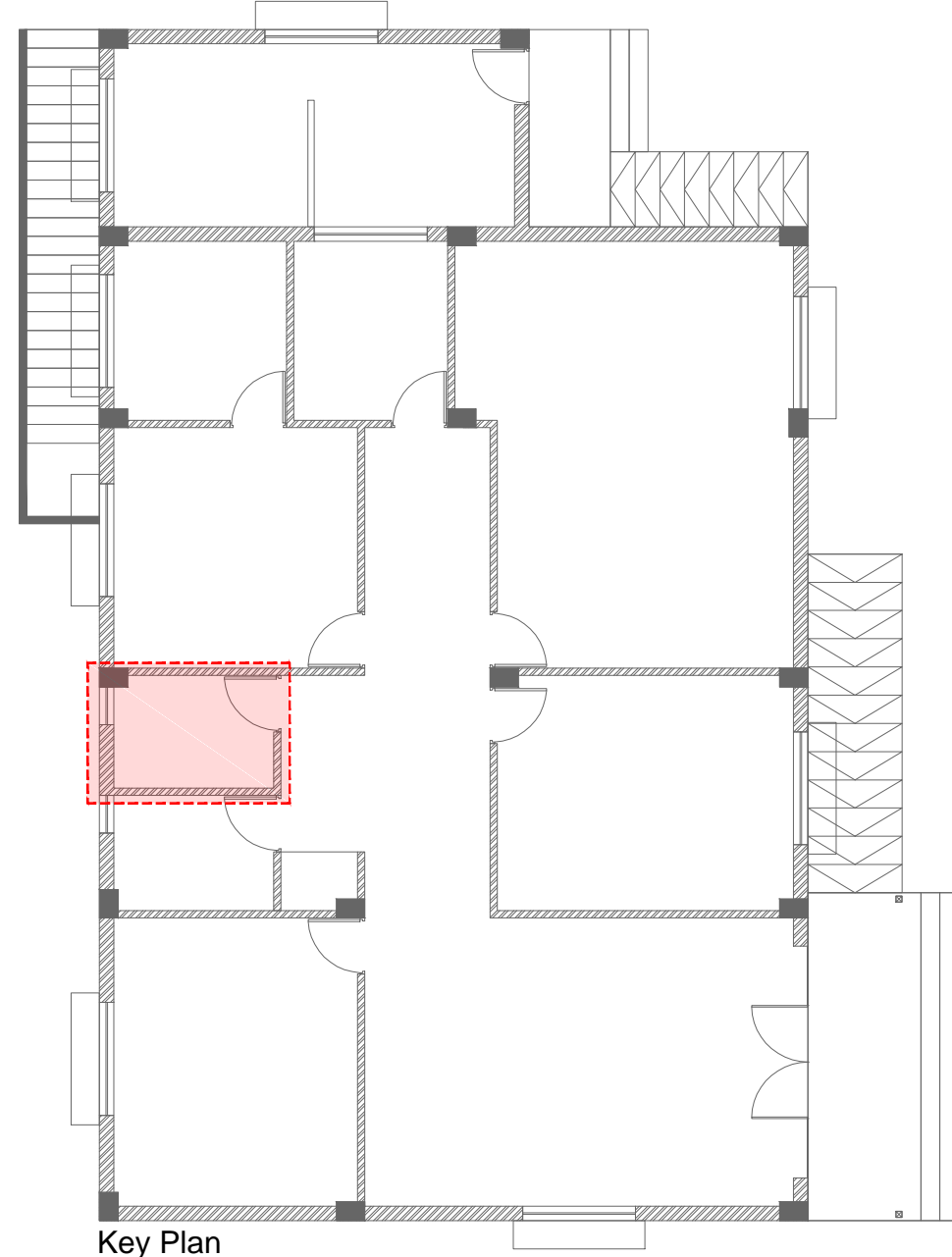
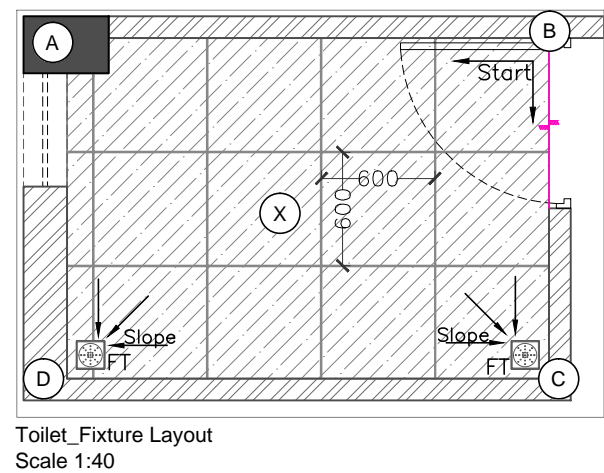
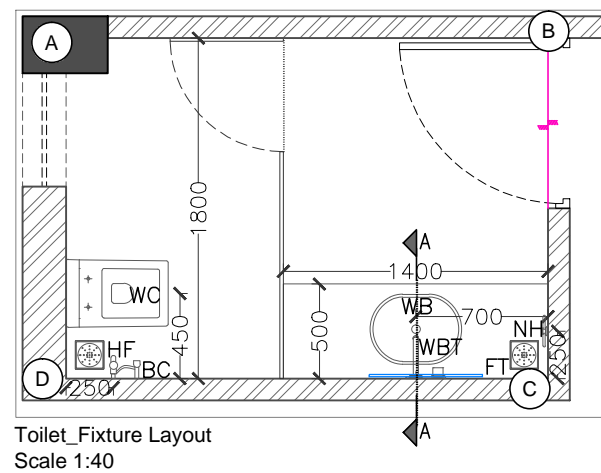
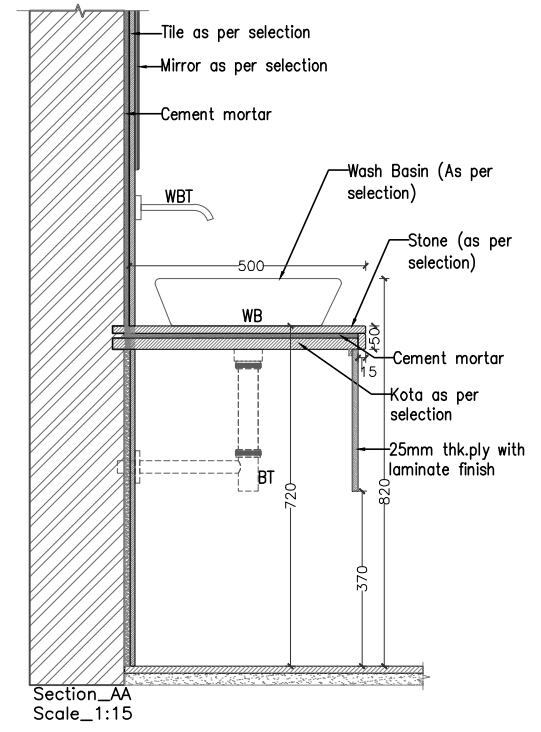
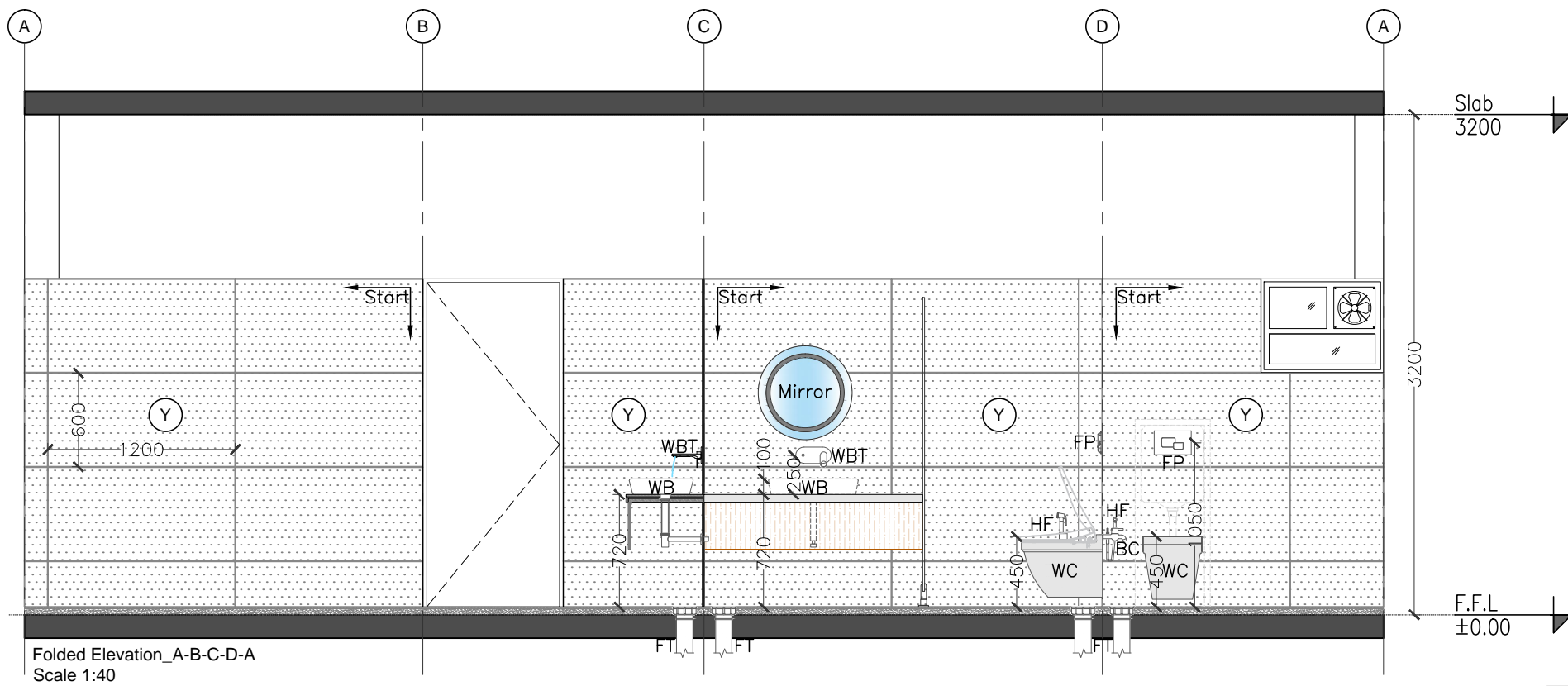


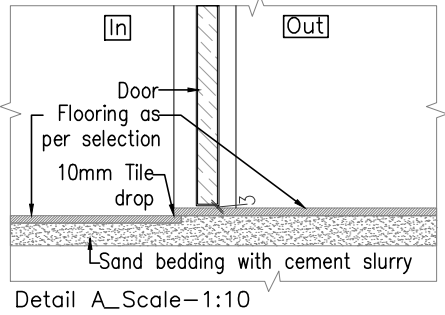
LAST SAVED BY: kpatel1 21/08/25 10:18 AM
 This drawing is property of Mamta Shah & Associates. Without our prior consent, it must be neither copied nor made available to third parties for the purpose other than for which it is meant.



Abbreviations	Symbol	Description
TPH		Toilet paper holder
WC		Water Closet
FP		Flush Plate
HF-BC		Health Faucet -Bib Cock
FT		Floor trap
WB		Wash Basin
NH		Napkin holder
Fixtures as per selection sheet		

Legends for tile:		
Tile	Size (mm)	Location
(X)	600X600	Toilet Floor
(Y)	1200X600	Toilet Dado

Legend	
	Start Point
	Tile Drop



Rev	Date	Issued	Issued to	Tender	KBP
R0	21-08-25	SC & PR	GMDC		

Key Plan:

Project:	GMDC Township Development				
Drawing:	Toilet Detail Laboratory Building Sheet 01				
Drawing Code:	2514_ARC_DT_02_R0				
Print Size:	A3	Scale:	As Mentioned		
File Title:	2514_ARC_DT_02_R0				
Project Code:	MSA 2514	Project Type:	ARC	Location:	Gadshisa
Print Date:	21-Aug-25	Drawn By:	K Patel	Checked By:	K Patel
				Approved By:	M Shah

MAMTA SHAH & ASSOCIATES
 Architects & Interior Designers
 C-12, Chanakyapuri Society,
 Chanakyapuri, Char Rasta,
 New Sama Road, Baroda
 Ph. No. +91 985 2715267 / 2710967
 mamta@msain.com / www.msain.com

Client:
Gujarat Mineral Development Corporation