

# Request for Proposal for

---

**Selection of Contractor for repair of Plant Civil Structures/  
Components at GMDC's 2X125 MW Akrimota Thermal Power Station  
(ATPS), Gujarat**

---

## Answers to Pre-Bid Queries and Corrigendum - I



**Gujarat Mineral Development Corporation Limited  
Khanij Bhavan, 132-Ring Road, Gujarat University Ground,  
Vastrapur, Ahmedabad- 380052**

## Responses to pre-bid queries

Sr. No.	Clause No.	Description	Pre-bid query/ Clarification	Response / Addendum / Corrigendum (If any)
1.	Page no. 12, Clause 2.2	Payment milestones	The table represented under clause no. 2.2 appears to be irrelevant for scope of work as per BOQ. Kindly please confirm stipulated time period for the project in Months.	As per RFP
2.	Page no. 17, Clause 3.3.1	Category A Chimneys: scaffolding systems – enabling works	3.3.1 Civil works plan and BOQ, it is mentioned to provide steel scaffolding system for Chimney. In general Chimney repair works are done through Suspended Rope Platform. We request to consider the same.	As per RFP
3.	Page no. 23, Clause 12.2	12.2 Payment milestones The Owner hereby covenants to pay the Successful Bidder for performance of the Contractual terms as payment terms specified hereunder	The table represented under clause no. 12.2 appears to be irrelevant for scope of work as per BOQ. 95% of Payment shall be paid though Running account bills within 14 days of receipt of bill and 5% shall be retained until defect liability period of 12 months.	Revised payment milestones have been detailed in Annexure 1
4.	Page no. 35, Clause 3	Earnest Money Deposit (EMD) / Bid Security The Bidder shall furnish a separate Bid Security (described as 'Earnest Money Deposit') as part of its Bid as per the given format. The Bid Security / EMD shall be sealed in separate sealed envelope along with the RFP fee, as described in Section 1.5 of Part 3 of this document. An amount of INR 36 Lakhs shall be provided as EMD by the banks approved by the Government of Gujarat from time to time except for co-operative banks, in favor of "Gujarat Mineral Development Corporation Ltd." The list of approved banks has been listed in Annexure 13. The EMD shall be in any of the below mentioned format: 1. Account payee Demand Draft / Banker's Cheque 2. Direct bank transfer (IMPS / NEFT / RTGS) to bank details specified in Annexure 14	<ul style="list-style-type: none"> <li>EMD amount of 36 Lakhs is too high for this tender when compared to similar work requirement. Kindly re-check and revise the EMD amount.</li> <li>We request to accept EMD in the form of Bank Guarantee as well.</li> </ul>	As per RFP EMD can be submitted in the form of Bank Guarantee. The format of the Bank Guarantee has been provided in Annexure 2 below, and a list of approved banks have been provided in Annexure 5
5.	BOQ	Chipping off existing loose, damaged Concrete from RCC members of all affected RCC Columns, Beams, Slabs of External RCC Columns, Beams, chajjas, Staircase room areas etc. and inside of premises at all floors including staircase and common	<ul style="list-style-type: none"> <li>Rusticide SS' Rust passivator or equivalent</li> <li>Providing and applying bonding coat of slurry</li> </ul>	As per RFP

Sr. No.	Clause No.	Description	Pre-bid query/ Clarification	Response / Addendum / Corrigendum (If any)
		<p>passages beyond main r/f. (if required in the opinion of the Consultant), carefully with chisel and hammer Providing and applying 'Rusticide SS' Rust passivator or equivalent as specified in the Brand Names to existing r/f. bars Including wire brushing of reinforcement , cleaning washing of concrete etc. complete as directed. Providing and applying two coats of rust preventor slurry made out of "Polyalk Fixoprime" or equivalent as specified in the Brand Names and cement in proportion 1:1.5 to existing r/f.bars as directed complete. Providing and applying bonding coat of slurry made out of "Polyalk EP" or equivalent as specified in the Brand Names and cement in proportion 1:1 to concrete and r/f substrates complete as directed. Providing and applying "Polyalk EP" or equivalent as specified in the Brand Names. Polymer modified cement mortar in Required proportions (1:5:15) to RCC members. Including Hand packing, curing, and making the surface rough for plastering. (Rates to include treatment cost for average thickness up to 25mm)</p>	<p>made out of "Polyalk EP or equivalent.</p> <p>These are separate item with Unit of measurement as Sq.mt of application area (Chipping area). Please amend the same.</p> <p>Also, please inform measurement of item where thickness is beyond 25mm</p>	
6.	BOQ	<p>Providing, cutting, bending, and fixing Additional Reinforcement in position steel reinforcement of specified/required sizes and shapes in the form or main rebars, stirrups &amp; rings, distribution rebars etc., and tying them to shear connectors using GI binding wire. The additional rebars should be coated with TWO coats of Anti Corrosive protective coating &amp; dry sand to be sprinkled on second coat including tying with Annealed Binding wires, providing cover blocks of appropriate sizes etc.</p>	<p>1) Anti Corrosive protective coating is all together a separate item with Unit of measurement as Sq.mt of application area (Chipping area). Please amend the same.</p> <p>2) GI binding wire shall be used for tying all types of reinforcement</p>	<p>As per RFP Annealed binding wires to be used</p>
7.	BOQ	<p>Providing and laying Super fluid Microconcrete -Roffe crete repairs (or equivalent as specified in the List of Brand names) in beam bottoms, columns, slabs etc. including mixing with 5mm to 10mm size aggregates, waterproof plywood/ steel plate shuttering, pouring, temping, Consolidating, curing etc. complete as per Manufacturer's specification and Consultants Instructions. The item shall be paid on actual consumption of Micro concrete. Rate of this item shall include chipping of concrete, surface preparation, rust removal, and prevention treatment as per specs and in accordance with consultants' suggestions and directions</p>	<ul style="list-style-type: none"> <li>• Chipping of concrete &amp; surface preparation</li> <li>• Rust removal and prevention treatment</li> </ul> <p>there are separate items with Unit of measurement as Sq.mt of application area (Chipping area). Please amend the same.</p>	<p>As per RFP</p>

Sr. No.	Clause No.	Description	Pre-bid query/ Clarification	Response / Addendum / Corrigendum (If any)
8.	BOQ	BOQ for Boiler and ESP DO--- DO SAME AS ABOVE BUT WITH USING READY MIX POLYMER MODIFIED CEMENT MORTAR OF ULTRATECH/FOSROC OR EQUIVALENT BRAND as suggested by the Consultants	This item is mentioned but there is not Qty, or unit mentioned against the same.	As per RFP
9.		Approved List of Materials	Approved List of Materials is not found in tender.	Provided in Annexure 4
10.	Page no. 40	Similar works will be prior experience involving repair, retrofitting or structural enhancement of civil structures (chimneys, boilers, cooling towers, etc.) at thermal power plant with capacity of 125 MW or higher <b>OR</b> prior experience involving repair, retrofitting, or structural enhancement of civil structures at any process industries (power, oil & gas, chemicals, cement).	Can it be relaxed / changed?	As per RFP
11.	BOQ	<p>Double scaffolding system (cup lock type)            Providing and fixing double scaffolding system (cup lock type) on the exterior side, any height made with 40 mm dia M.S. tube 1.5 m centre to centre, horizontal &amp; vertical tubes joining with cup &amp; lock system with M.S. tubes, M.S. tube challies, M.S. clamps and M.S. staircase system in the scaffolding for working platform etc. and maintaining it in a serviceable condition for the required duration as approved and removing it thereafter. The scaffolding system shall be stiffened with bracings, runners, connection with the building etc wherever required for inspection of work at required locations with essential safety features for the workmen etc. complete as per directions and approval of Engineer-in-charge .The elevational area of the scaffolding shall be measured for payment purpose .The payment will be made once irrespective of duration of scaffolding as directed by the engineer in charge.</p> <p>Note:- The scaffolding system shall remain till the completion of all structural repair work in all respect &amp; Same scaffolding to be used for external painting works.</p>	Please allow - any access system along with item of scaffolding	As per RFP
12.	BOQ	Chipping off existing loose, damaged Concrete from RCC members beyond main r/f., carefully with chisel and hammer Providing and applying 'Rusticide SS' Rust passivator or equivalent as specified in the Brand Names to existing r/f. bars.	Nowadays Ready to use Thixotropic Polymer Mortar with fibres are recommended. These are manufactured under quality and	As per RFP

Sr. No.	Clause No.	Description	Pre-bid query/ Clarification	Response / Addendum / Corrigendum (If any)
		Including wire brushing of reinforcement, cleaning washing of concrete etc complete as directed. Providing and applying two coats of rust preventor slurry made out of "Polyalk Fixoprime" or equivalent as specified in the Brand Names and cement in proportion 1:1.5 to existing r/f.bars as directed complete. Providing and applying bonding coat of slurry made out of "Polyalk EP" or equivalent as specified in the Brand Names and cement in proportion 1:1 to concrete and r/f substrates complete as directed. Providing and applying "Polyalk EP" or equivalent as specified in the Brand Names. Polymer modified cement mortar. in Required proportions (1:5:15) to RCC members. Including Hand packing, curing and making the surface rough for plastering. (Rates to include treatment cost for average thickness upto 25mm)	supervision and need to add only water at site.	
13.	BOQ	Drilling holes of required size upto 16 mm Diameter and up to 50mm depth in concrete and cleaning the same as directed	what are these holes to be filled? with, rebaring or?	For cementitious grouting as detailed in Annexure 1 of the RFP
14.	BOQ	<p>Double scaffolding system (cup lock type)</p> <p>Providing and fixing double scaffolding system (cup lock type) on the exterior side, any height made with 40 mm dia M.S. tube 1.5 m centre to centre, horizontal &amp; vertical tubes joining with cup &amp; lock system with M.S. tubes, M.S. tube challies, M.S. clamps and M.S. staircase system in the scaffolding for working platform etc. and maintaining it in a serviceable condition for the required duration as approved and removing it thereafter .The scaffolding system shall be stiffened with bracings, runners, connection with the building etc wherever required for inspection of work at required locations with essential safety features for the workmen etc. complete as per directions and approval of Engineer-in-charge .The elevational area of the scaffolding shall be measured for payment purpose .The payment will be made once irrespective of duration of scaffolding as directed by the engineer in charge.</p> <p>Note:- The scaffolding system shall remain till the completion of all structural repair work in all respect &amp; same scaffolding to be used for external painting works.</p>	Please inform the unit where this is to be erected.	Boiler ESP area

Sr. No.	Clause No.	Description	Pre-bid query/ Clarification	Response / Addendum / Corrigendum (If any)
15.		HORIZONTAL EXPANSION JOINT FILLING: Carefully demolishing existing Coping/ Stone etc , Brick walls above Horizontal Expansion joints at terrace floor & recasting the RCC Pardis in M200 (1:1.5:3) etc all complete as per consultants design and drg including Providing and applying 2 component Polysulphide sealant of BASF or equivalent etc complete as instructed and directed.	Drawing is required for quoting	Provided in Annexure 3
16.	BOQ	Providing and laying in situ five course water proofing treatment with APP (Atactic Polypropylene) modified Polymeric membrane over roof consisting of first coat of bitumen primer @ 0.40Kg per sqm, 2nd & 4th courses of bonding material @ 1.20 kg/sqm, which shall consist of blown type bitumen of grade 85/25 conforming to IS: 702, 3rd layer of roofing membrane APP modified Polymeric membrane 2.0 mm thick of 3.00 Kg/sqm weight consisting of five layers prefabricated with centre core as 100-micron HMHDPE film sandwiched on both sides with polymeric mix and the polymeric mix is protected on both side with 20-micron HMHDPE film. 5th, the topmost layer shall be finished with brick tiles of class designation 10 grouted with cement mortar 1:3 (1 cement: 3 fine sand) mixed with 2% integral water proofing compound by weight of cement over a 12 mm layer of cement mortar 1:3 (1 cement: 3 fine sand) and finished neat (item of laying brick bats shall be paid for separately).	brick tiles or brick bats?	Brick tiles
17.	BOQ	Preparing surface for painting with wire brush cleaning and applying two coats of epoxy red oxide zinc phosphate primer of 30 microns each and two coats of Epoxy Corrosion Resistant Enamel paint of 30 microns after fabrication including touching up with spray painting after erection etc complete	Qty measured of what? Primer or enamel paint	Quantity considered is for epoxy paint
18.	BOQ	Double scaffolding system (cup lock type) Providing and fixing double scaffolding system (cup lock type) on the exterior side, up to seven story height made with 40 mm dia M.S. tube 1.5 m centre to centre, horizontal & vertical tubes joining with cup & lock system with M.S. tubes, M.S. tube challies, M.S. clamps and M.S. staircase system in the scaffolding for working platform etc. and maintaining it in a serviceable condition for the required duration as approved and	Please inform the unit where this is to be erected.	Intake channel and pumphouse

Sr. No.	Clause No.	Description	Pre-bid query/ Clarification	Response / Addendum / Corrigendum (If any)
		<p>removing it thereafter. The scaffolding system shall be stiffened with bracings, runners, connection with the building etc wherever required for inspection of work at required locations with essential safety features for the workmen etc. complete as per directions and approval of Engineer-in-charge. The elevational area of the scaffolding shall be measured for payment purpose. The payment will be made once irrespective of duration of scaffolding as directed by the engineer in charge.</p> <p>Note:- The scaffolding system shall remain till the completion of all structural repair work in all respect &amp; Same scaffolding to be used for external painting works</p>		
19.	BOQ	<p>Double scaffolding system (cup lock type) Providing and fixing double scaffolding system (cup lock type) on the exterior side, up to seven story height made with 40 mm dia M.S. tube 1.5 m centre to centre, horizontal &amp; vertical tubes joining with cup &amp; lock system with M.S. tubes, M.S. tube challies, M.S. clamps and M.S. staircase system in the scaffolding for working platform etc. and maintaining it in a serviceable condition for the required duration as approved and removing it thereafter. The scaffolding system shall be stiffened with bracings, runners, connection with the building etc. wherever required for inspection of work at required locations with essential safety features for the workmen etc. complete as per directions and approval of Engineer-in-charge. The elevational area of the scaffolding shall be measured for payment purpose.</p> <p>Note:- The scaffolding system shall remain till the completion of all structural repair work in all respect &amp; Same scaffolding to be used for external painting works.</p>	Please inform the unit where this is to be erected	Cooling tower 2
20.	BOQ	<p>Glass Fiber Wrapping System: Providing &amp; laying applying Glass Fiber sheet wrap at structural members including. Surface Preparation: Grinding / moulding concrete substrate, cleaning it with wire brush, removing oil, laitance if present, rounding sharp edges to min 25 mm radius etc., complete. Profiling: Applying PRIMER on prepared substrate, filling holes and uneven surface with PUTTY etc., complete. Wrapping: Wrapping the Glass fiber wrap to structural element at desired</p>	GSM of GFRC	450 GSM

Sr. No.	Clause No.	Description	Pre-bid query/ Clarification	Response / Addendum / Corrigendum (If any)
		orientation using tamping roller to avoid any air voids etc., Repeat the same procedure for multiple layer with interval of 8 hours. Sand Pasting: Applying saturant, rectify air voids if any, paste the river sand on it to make surface rough to take any further finishes. (Mode of Measurement: Per Sq.Mt of Fiber consume and not application of surface area.)		
21.	BOQ	Preparing surface for painting with wire brush cleaning and applying two coats of epoxy red oxide zinc phosphate primer of 30 microns each and two coats of Epoxy Corrosion Resistant Enamel paint of 30 microns after fabrication including touching up with spray painting after erection etc. complete	Qty measured of what? Primer or enamel paint	Quantity considered is for epoxy paint

## Annexure 1: Payment Milestones

Category	Activity	% of total contract value	Timelines
<b>Mobilization and Execution</b>	Advance payment for procurement of materials, after submission of Performance Security and submission of item-wise price list	15%	T + 2 weeks
	Submission of detailed "Civil Works Execution Plan"	20%	T + 6 weeks
	Completion of Pre-Overhaul activities	10%	T + 24 weeks
	Monthly payments against progressive overhauling civil works completion on site	10% (per month)	T + 32 weeks (Monthly payments in equal installments for 3 months during Civil works execution)
	Completion of inspection/ for both units and issue of Operation Acceptance Certificate by the PMC	15%	T + 34 weeks
	Submission of final 'Civil works Completion Report' approved by Authority	5%	T + 36 weeks
	Completion of defect liability (warranty period)	5%	18 (eighteen) months from the date of Completion of the Civil works or 12 (twelve) months from the date of Operational Acceptance of the equipment, whichever first occurs

## Annexure 2: Format for Bank Guarantee towards EMD

Please note the following details for Compulsory e-confirmation for Bank Guarantee through ICICI Bank through SFMS under our:

Gujarat Mineral Development Corporation Limited (GMDC)  
132 Ft Ring Road, Near University Ground Vastrapur, Ahmedabad.  
Bank Name: ICICI Bank Ltd  
IFS Code: ICIC0000024  
UIC GMDC530265584 for Field 7037 MT760

(On Non-judicial Stamp paper to be submitted along with submission of bids)

..... (Name of the Bank)

Address.....

Guarantee No.....

A/C Messrs..... (Name of Bidder)

Date of Expiry.....

Limit to liability (currency & amount) .....

Invitation For RFP No..... Dated..... (bidding document )

For..... (Name of Facilities)

**Subject:** Earnest Money Deposit Bank Guarantee.

Date.....2023

To,

Gujarat Mineral Development Corporation Ltd.  
132 Ft Ring Road,  
Near University Ground  
Vastrapur,  
Ahmedabad.

Dear Sir,

In consideration of Gujarat Mineral Development Corporation (hereinafter called "GMDC") which expression shall unless repugnant to the subject of context include his successors and assigns having agreed to exempt M/s..... (herein after called "Bidder") from demand under the terms and conditions of "Technical Bid Document" ( hereinafter called the said "Bidding Document") issued by the GMDC vide RFP No.\_\_\_\_\_for the work\_\_\_\_\_

( Name of the facilities ) from Earnest Money Deposit (EMD) of Bid for the due fulfillment by the Bidder of the terms and conditions contained in the said Bidding Document on production of Bank Guarantee for INR \_\_\_\_\_

( \_\_\_\_\_ only ) ( figure in words).

1. We the \_\_\_\_\_ ( Name of Bank ) hereinafter referred to as "Bank" having our registered office at \_\_\_\_\_ ( address of Bank ) do hereby undertake and agree to indemnify and keep indemnified GMDC to extent of INR \_\_\_\_\_ ( \_\_\_\_\_ only ) ( figures in words ) against any losses, damage cost, charges and expenses caused to or suffered by or that may be caused or suffered by GMDC by reason of any breach or breaches by the Bidder of any of the terms and conditions contained in the said Bidding Document and unconditionally pay the amount claimed by GMDC on demand and without demur to the extent aforesaid.

2. We \_\_\_\_\_ (Name of Bank) do hereby undertake to pay the amounts due and payable under the guarantee without any demur merely on a demand by you stating that the amount claimed is due by way of loss or damage caused to or would be caused or suffered by you by reason of any breach by the said Bidder of any of the terms or conditions contained in the said Bidding Document by reason of the Bidder's failure to fulfill the conditions of said Bidding Document. Any such demand on the Bank shall be conclusive as regards the amount due and payable by the Bank under this guarantee. However, our liability under this guarantee shall be restricted to an amount not exceeding INR \_\_\_\_\_.

3. We \_\_\_\_\_ ( Name of Bank ) further agree that GMDC shall be the sole judge of and as to whether the Bidder has committed any breach or breaches of terms and conditions of the said Bidding Document and the extent of loss, damages, costs, charges and expenses caused to or suffered by or that may cause to or suffered by GMDC on account hereof to the extent of the Bid Security required to be deposited by the Bidder in respect of the said document and the decision of GMDC that the Bidder has committed such breach or breaches and as to the amount or amounts of loss, damages, costs, charges, and expenses caused to or suffered by or that may be caused to or suffered by GMDC shall be final and binding on us.

4. We \_\_\_\_\_ (Name of Bank) further agree that guarantee herein contained shall remain in full force and effect during the period that would be taken for the performance on the said Bidding Document and that it shall continue to be enforceable till you certify that terms and conditions of the said Bidding Document have been fully and properly carried out by the said Bidder and accordingly discharge the guarantee. Unless a demand or claim under this guaranteed is made on us in writing on or before the (date) \_\_\_\_\_ we shall be discharged from all liability under this guarantee.

5. We \_\_\_\_\_ ( Name of Bank ) further agree with you that you have the fullest liberty without our consent and without affecting in any manner our obligations hereunder to vary any of the terms and conditions of the said Bidding Document or to extend time of performance by the said Bidder from time to time or to postpone for any time or from time to time any of the powers exercisable by you against the said Bidder and to forbear or enforce any of the terms and conditions relating to the said Bidding Document and we shall not be relieved from our liability by reason of any such variation or extension being granted to the said Bidder or for any forbearance act or omission on your part or any indulgence by you to the said Bidder or any such matter or thing whatsoever under the law relating to sureties would but for this provision have effect of so relieving us.

6. It shall not be necessary for GMDC to proceed against the Bidder before proceeding against the Bank and the Guarantee herein contained shall be enforceable against the Bank, notwithstanding any security which GMDC may have obtained from the Bidder at this time when proceeding are taken against Bank hereunder be outstanding or unrealized.

7. We \_\_\_\_\_ (Name of Bank) further undertake to unconditionally pay the amount claimed by GMDC merely on demand and without demur to the extent aforesaid.

8. We, the said Bank lastly undertake not to revoke this guarantee during its currency except with the previous consent of GMDC in writing.

9. This Guarantee will not be discharged due to the change in the constitution of the Bank or the said bidder.

10. The Bank has under its constitution power to give this guarantee and Mr. \_\_\_\_\_ who has signed it on behalf of the Bank have authority to do so.

Yours faithfully

For.....

(Name of the Bank)

Notwithstanding anything contained hereinabove

(I) Our liability under this Bank Guarantee shall not exceed **Rs** \_\_\_\_\_ **/- (Rupees** \_\_\_\_\_ **only)**

(II) This Bank Guarantee is valid up to \_\_\_\_\_ (Date).

(III) We are liable to pay the guarantee amount or any part thereof under this bank Guarantee only and only if you serve upon us a written claim or a demand on or before \_\_\_\_\_ (date).

(IV) This bank guarantee is operative only when accompanied with SFMS advice from us.

Yours faithfully

For \_\_\_\_\_ (Name of the Bank)

**Yours faithfully**

**For.....**

**(Name of the Bank)**

**Annexure 3: Drawings**

*(Attached Separately)*

**Annexure 4: Approved list of materials**

*(Attached Separately)*

## **Annexure 5: List of approved banks for EMD, RFP fees, and Performance Security**

The following list of banks can get updated from time to time as per the latest notice provided by the Government of Gujarat. The Bidder can provide EMD / RFP Fee / Performance Security from any of the approved banks by the Government of Gujarat in the latest notice, except for the co-operative banks.

**Acceptance of Bank Guarantee as  
Security Deposit and Earnest  
Money Deposit.**

**Government of Gujarat**

**Finance Department**

GR. No.: FD/MSM/e-file/4/2023/0057/D.M.O.

Date: 21/04/2023

Read: FD GR. No.: EMD/4/2022/0002/DMO Dt. 20/05/2022

**Preamble:**

Tendering authorities of the State Government and its Boards/Corporations/PSUs frequently take Bank Guarantee from the bidders towards Security Deposit and Earnest Money Deposit. The State Government had issued the list of eligible banks vide above read resolutions of this department dated 20/05/2022.

After careful consideration, the Government has decided to approve the list of Banks whose Bank Guarantees would be accepted for the purpose mentioned above. It has now been decided to resolve as follows:

**Resolution:**

Government Departments and State Government Boards / Corporations / PSUs would accept Bank Guarantee (towards Security Deposit and Earnest Money Deposit) issued by any of the banks included in the **Annexure I**, attached to this Resolution.

The tendering authority will be required to ascertain the authenticity of the Bank Guarantee and set up necessary internal control procedures.

By order and in the name of the Governor of Gujarat.

  
(S. Chhakehuak)

Additional Secretary (Budget)  
Finance Department

**To,**

The Secretary to His Excellency Governor of Gujarat, Raj Bhavan, Gandhinagar

Principal Secretary to Hon. Chief Minister

PS to Hon. Finance Minister

PS to all Hon. Ministers, State Ministers and Deputy Ministers

PS to Chief Secretary

PS to Principal Secretary, Finance Department

PS to Secretary (EA), Finance Department

PS to Secretary (Expenditure), Finance Department

PS to Additional Secretary (B), Finance Department

All Administrative Departments, Sachivalaya, Gandhinagar

System Manager, Finance Department for put up on GSWAN website

Select File DMO-Finance Department

**Annexure I.**

**Finance Department, GR. No.: FD/MSM/e-file/4/2023/0057/D.M.O.**

Date: 21/04/2023

(A) Guarantees issued by the following banks will be accepted as SD/EMD on permanent basis:

❖ **All Nationalized Banks**

(B) Guarantees issued by the following Banks will be accepted as SD/EMD for the period up to March 31, 2024. The validity cut-off date in the GR is with respect to the date of issue of Bank Guarantee irrespective of the date of termination of Bank Guarantee.

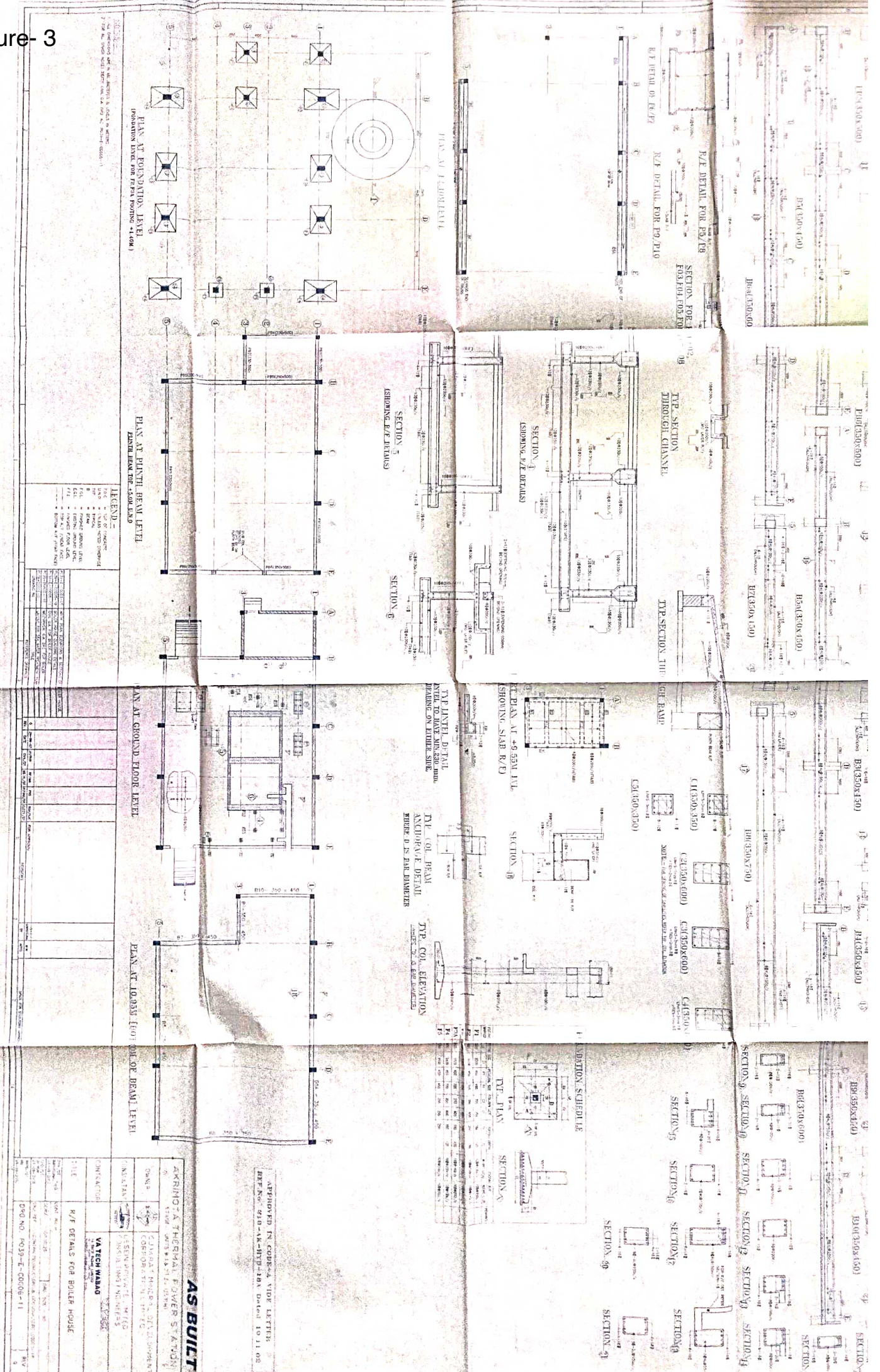
Sr No	Name of Banks	Sr No	Name of Banks
1	AXIS Bank	17	Kotak Mahindra Bank
2	AU Small Finance Bank	18	South Indian Bank
3	Bandhan Bank	19	Standard Chartered Bank
4	BNP Paribas	20	Tamilnadu Mercantile Bank
5	City Union Bank	21	Utkarsh Small Finance Bank
6	CSB Bank	22	The Kalupur Commercial Co-op. Bank
7	DBS Bank India Limited	23	Ahmedabad Mercantile Co-op. Bank
8	DCB Bank	24	Nutan Nagarik Sahakari Bank Ltd.
9	Equitas Small Finance Bank	25	Rajkot Nagarik Sahakari Bank Ltd.
10	FEDERAL Bank	26	Saraswat Co-Operative Bank Ltd
11	HDFC Bank	27	SVC Co-Operative Bank LTD.
12	HSBC Bank	28	The Gujarat State Co-operative Bank
13	ICICI Bank	29	The Mehsana Urban Co-Op. Bank Ltd
14	IndusInd Bank	30	The Surat District Co-Operative Bank Ltd
15	Karnataka Bank	31	The Surat People's Co-Op. Bank Ltd
16	Karur Vysya Bank	32	Saurashtra Gramin Bank

**All the eligible banks are instructed to collect the original documents/papers of guarantee from the concerned tendering authority.**

  
(S. Chhakchhuak)

Additional Secretary (Budget)  
Finance Department

-----XXXXX-----

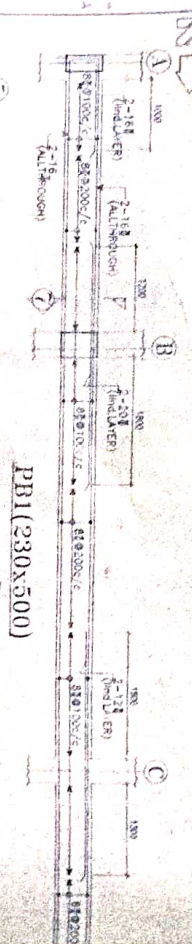


**AS BUILT**

APPROVED IN CORRECTION LETTERS  
DATE: 2010-05-10

AKRINCH A THERMAL POWER STATION  
STEEL STRUCTURE DESIGN

OWNER	VA TECH WABCO
DESIGNER	VA TECH WABCO
CHECKER	VA TECH WABCO
APPROVER	VA TECH WABCO
DATE	2010-05-10
PROJECT NO.	2009-E-0006-11
REV	0



PB5 (350x500)

B5 (350x150)

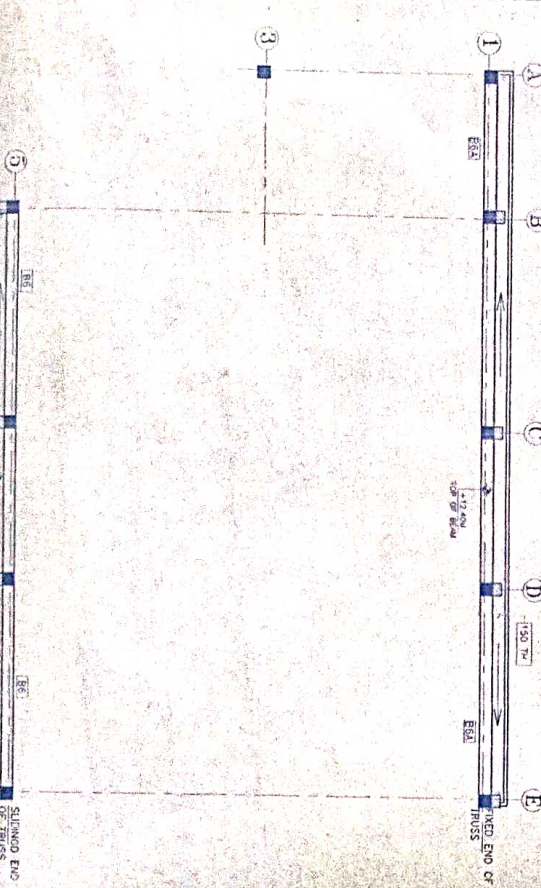
B6 (350x60)

R/F DETAIL OF P6/P7

R/F DETAIL FOR P9/P10

R/F DETAIL FOR P5/P8

SECTION FOR F01, F02, F03, F04, F05, F06, F07, F08



PB2 (230x500)

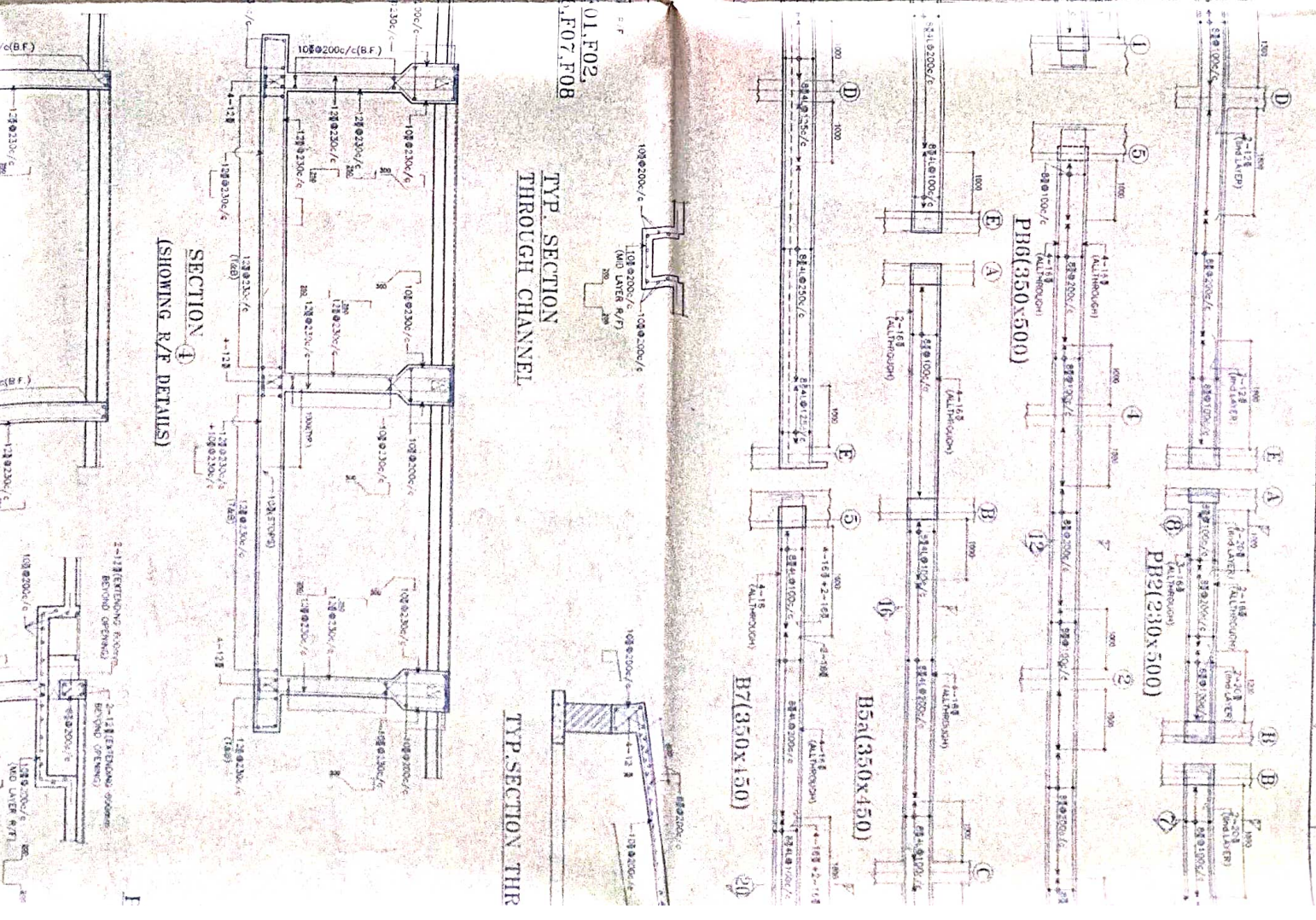
B5 (350x150)

B7 (350x150)

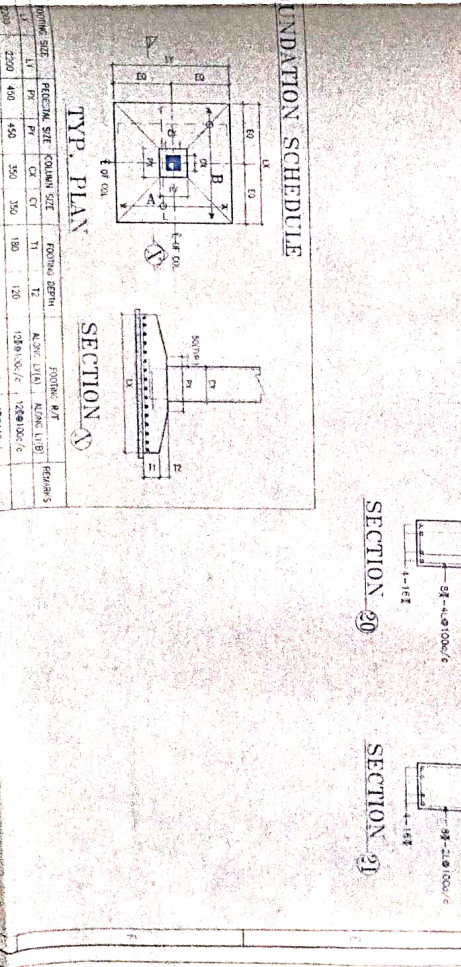
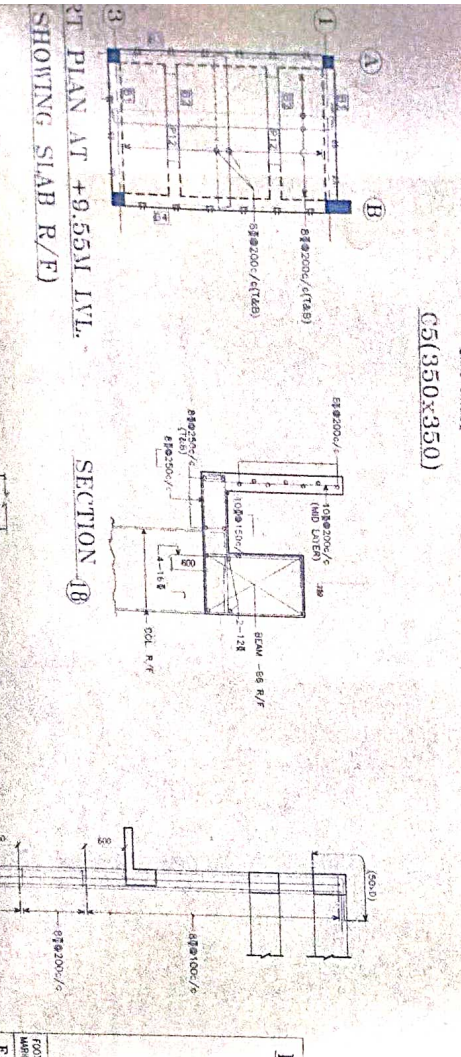
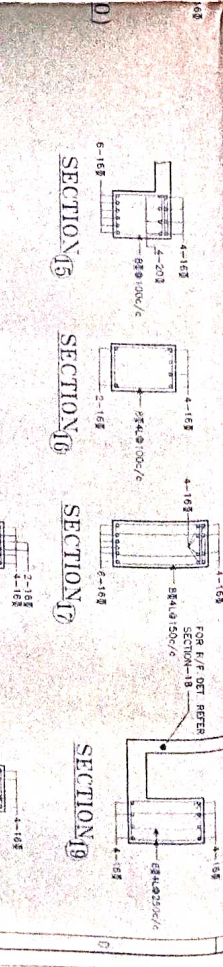
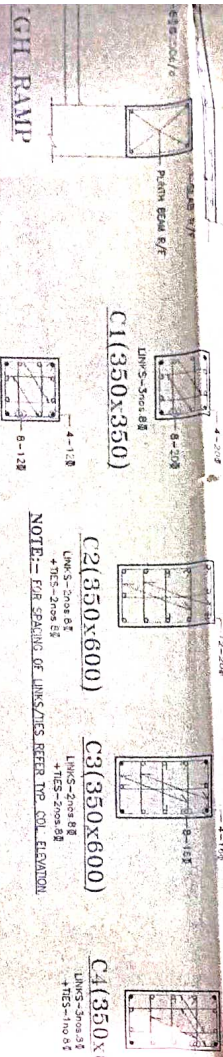
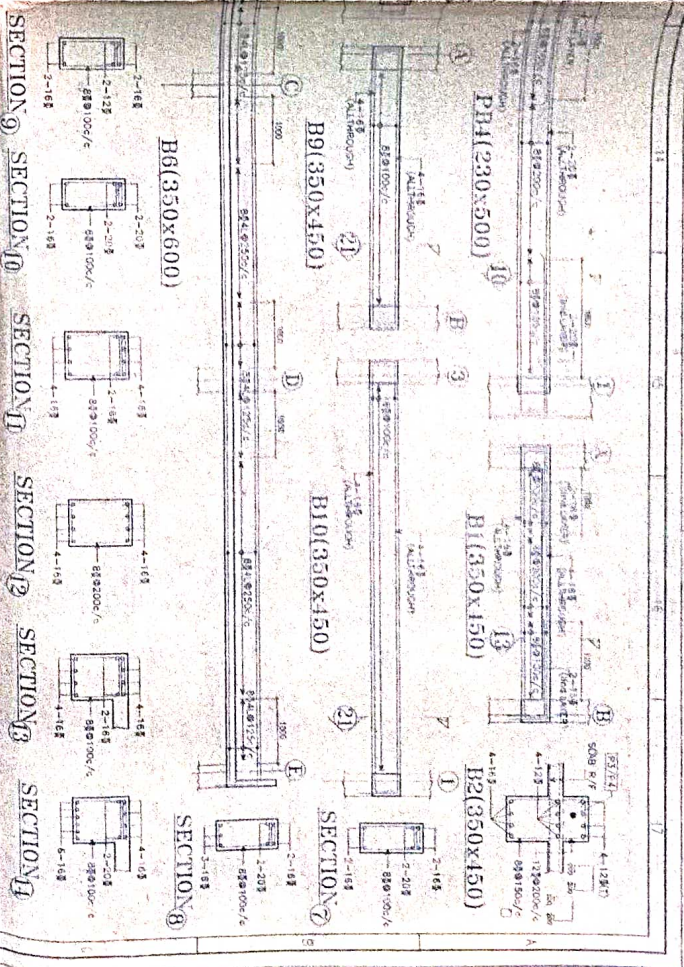
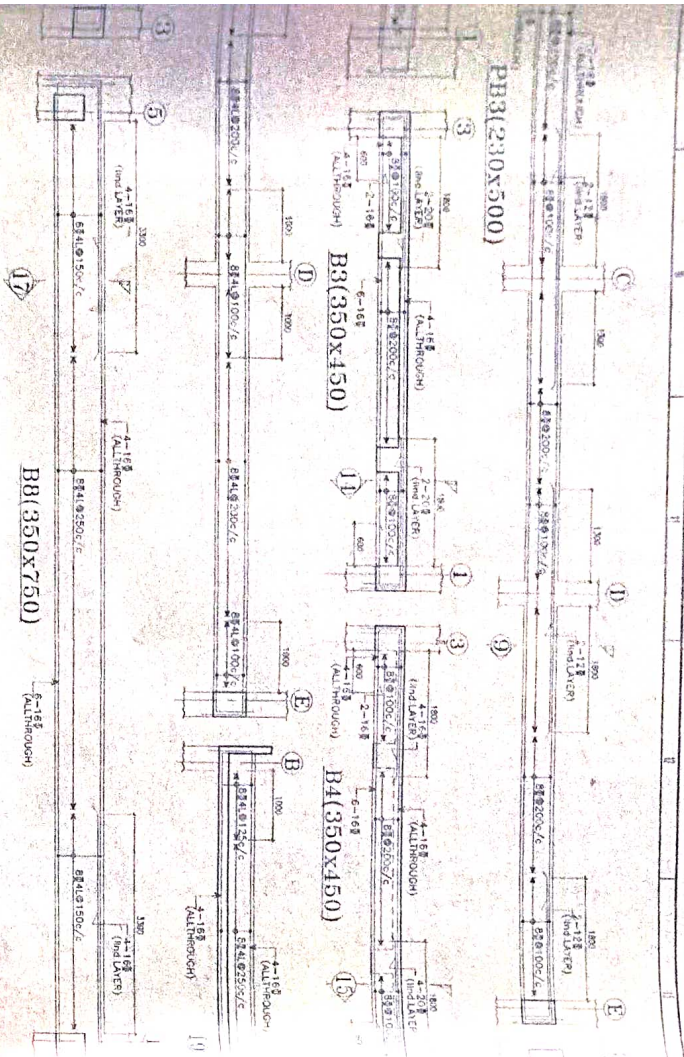
TYP. SECTION THROUGH CHANNEL

TYP. SECTION THR

SECTION 1 (SHOWING R/F DETAILS)



2-112 (EXTENDING ABOVE) BEHIND GROUND  
2-111 (EXTENDING ABOVE) BEHIND GROUND  
2-110 (EXTENDING ABOVE) BEHIND GROUND  
2-109 (EXTENDING ABOVE) BEHIND GROUND  
2-108 (EXTENDING ABOVE) BEHIND GROUND  
2-107 (EXTENDING ABOVE) BEHIND GROUND  
2-106 (EXTENDING ABOVE) BEHIND GROUND  
2-105 (EXTENDING ABOVE) BEHIND GROUND  
2-104 (EXTENDING ABOVE) BEHIND GROUND  
2-103 (EXTENDING ABOVE) BEHIND GROUND  
2-102 (EXTENDING ABOVE) BEHIND GROUND  
2-101 (EXTENDING ABOVE) BEHIND GROUND  
2-100 (EXTENDING ABOVE) BEHIND GROUND  
2-99 (EXTENDING ABOVE) BEHIND GROUND  
2-98 (EXTENDING ABOVE) BEHIND GROUND  
2-97 (EXTENDING ABOVE) BEHIND GROUND  
2-96 (EXTENDING ABOVE) BEHIND GROUND  
2-95 (EXTENDING ABOVE) BEHIND GROUND  
2-94 (EXTENDING ABOVE) BEHIND GROUND  
2-93 (EXTENDING ABOVE) BEHIND GROUND  
2-92 (EXTENDING ABOVE) BEHIND GROUND  
2-91 (EXTENDING ABOVE) BEHIND GROUND  
2-90 (EXTENDING ABOVE) BEHIND GROUND  
2-89 (EXTENDING ABOVE) BEHIND GROUND  
2-88 (EXTENDING ABOVE) BEHIND GROUND  
2-87 (EXTENDING ABOVE) BEHIND GROUND  
2-86 (EXTENDING ABOVE) BEHIND GROUND  
2-85 (EXTENDING ABOVE) BEHIND GROUND  
2-84 (EXTENDING ABOVE) BEHIND GROUND  
2-83 (EXTENDING ABOVE) BEHIND GROUND  
2-82 (EXTENDING ABOVE) BEHIND GROUND  
2-81 (EXTENDING ABOVE) BEHIND GROUND  
2-80 (EXTENDING ABOVE) BEHIND GROUND  
2-79 (EXTENDING ABOVE) BEHIND GROUND  
2-78 (EXTENDING ABOVE) BEHIND GROUND  
2-77 (EXTENDING ABOVE) BEHIND GROUND  
2-76 (EXTENDING ABOVE) BEHIND GROUND  
2-75 (EXTENDING ABOVE) BEHIND GROUND  
2-74 (EXTENDING ABOVE) BEHIND GROUND  
2-73 (EXTENDING ABOVE) BEHIND GROUND  
2-72 (EXTENDING ABOVE) BEHIND GROUND  
2-71 (EXTENDING ABOVE) BEHIND GROUND  
2-70 (EXTENDING ABOVE) BEHIND GROUND  
2-69 (EXTENDING ABOVE) BEHIND GROUND  
2-68 (EXTENDING ABOVE) BEHIND GROUND  
2-67 (EXTENDING ABOVE) BEHIND GROUND  
2-66 (EXTENDING ABOVE) BEHIND GROUND  
2-65 (EXTENDING ABOVE) BEHIND GROUND  
2-64 (EXTENDING ABOVE) BEHIND GROUND  
2-63 (EXTENDING ABOVE) BEHIND GROUND  
2-62 (EXTENDING ABOVE) BEHIND GROUND  
2-61 (EXTENDING ABOVE) BEHIND GROUND  
2-60 (EXTENDING ABOVE) BEHIND GROUND  
2-59 (EXTENDING ABOVE) BEHIND GROUND  
2-58 (EXTENDING ABOVE) BEHIND GROUND  
2-57 (EXTENDING ABOVE) BEHIND GROUND  
2-56 (EXTENDING ABOVE) BEHIND GROUND  
2-55 (EXTENDING ABOVE) BEHIND GROUND  
2-54 (EXTENDING ABOVE) BEHIND GROUND  
2-53 (EXTENDING ABOVE) BEHIND GROUND  
2-52 (EXTENDING ABOVE) BEHIND GROUND  
2-51 (EXTENDING ABOVE) BEHIND GROUND  
2-50 (EXTENDING ABOVE) BEHIND GROUND  
2-49 (EXTENDING ABOVE) BEHIND GROUND  
2-48 (EXTENDING ABOVE) BEHIND GROUND  
2-47 (EXTENDING ABOVE) BEHIND GROUND  
2-46 (EXTENDING ABOVE) BEHIND GROUND  
2-45 (EXTENDING ABOVE) BEHIND GROUND  
2-44 (EXTENDING ABOVE) BEHIND GROUND  
2-43 (EXTENDING ABOVE) BEHIND GROUND  
2-42 (EXTENDING ABOVE) BEHIND GROUND  
2-41 (EXTENDING ABOVE) BEHIND GROUND  
2-40 (EXTENDING ABOVE) BEHIND GROUND  
2-39 (EXTENDING ABOVE) BEHIND GROUND  
2-38 (EXTENDING ABOVE) BEHIND GROUND  
2-37 (EXTENDING ABOVE) BEHIND GROUND  
2-36 (EXTENDING ABOVE) BEHIND GROUND  
2-35 (EXTENDING ABOVE) BEHIND GROUND  
2-34 (EXTENDING ABOVE) BEHIND GROUND  
2-33 (EXTENDING ABOVE) BEHIND GROUND  
2-32 (EXTENDING ABOVE) BEHIND GROUND  
2-31 (EXTENDING ABOVE) BEHIND GROUND  
2-30 (EXTENDING ABOVE) BEHIND GROUND  
2-29 (EXTENDING ABOVE) BEHIND GROUND  
2-28 (EXTENDING ABOVE) BEHIND GROUND  
2-27 (EXTENDING ABOVE) BEHIND GROUND  
2-26 (EXTENDING ABOVE) BEHIND GROUND  
2-25 (EXTENDING ABOVE) BEHIND GROUND  
2-24 (EXTENDING ABOVE) BEHIND GROUND  
2-23 (EXTENDING ABOVE) BEHIND GROUND  
2-22 (EXTENDING ABOVE) BEHIND GROUND  
2-21 (EXTENDING ABOVE) BEHIND GROUND  
2-20 (EXTENDING ABOVE) BEHIND GROUND  
2-19 (EXTENDING ABOVE) BEHIND GROUND  
2-18 (EXTENDING ABOVE) BEHIND GROUND  
2-17 (EXTENDING ABOVE) BEHIND GROUND  
2-16 (EXTENDING ABOVE) BEHIND GROUND  
2-15 (EXTENDING ABOVE) BEHIND GROUND  
2-14 (EXTENDING ABOVE) BEHIND GROUND  
2-13 (EXTENDING ABOVE) BEHIND GROUND  
2-12 (EXTENDING ABOVE) BEHIND GROUND  
2-11 (EXTENDING ABOVE) BEHIND GROUND  
2-10 (EXTENDING ABOVE) BEHIND GROUND  
2-9 (EXTENDING ABOVE) BEHIND GROUND  
2-8 (EXTENDING ABOVE) BEHIND GROUND  
2-7 (EXTENDING ABOVE) BEHIND GROUND  
2-6 (EXTENDING ABOVE) BEHIND GROUND  
2-5 (EXTENDING ABOVE) BEHIND GROUND  
2-4 (EXTENDING ABOVE) BEHIND GROUND  
2-3 (EXTENDING ABOVE) BEHIND GROUND  
2-2 (EXTENDING ABOVE) BEHIND GROUND  
2-1 (EXTENDING ABOVE) BEHIND GROUND  
2-0 (EXTENDING ABOVE) BEHIND GROUND



TYP. INTEL. DETAIL  
INTEL. TO HAVE MIN 230. mm.  
ON FINISH SURF

TYP. COL. BEAM  
TYP. COL. ELEVATION

CGH RAMP

PLAN RAMP

SECTION 10

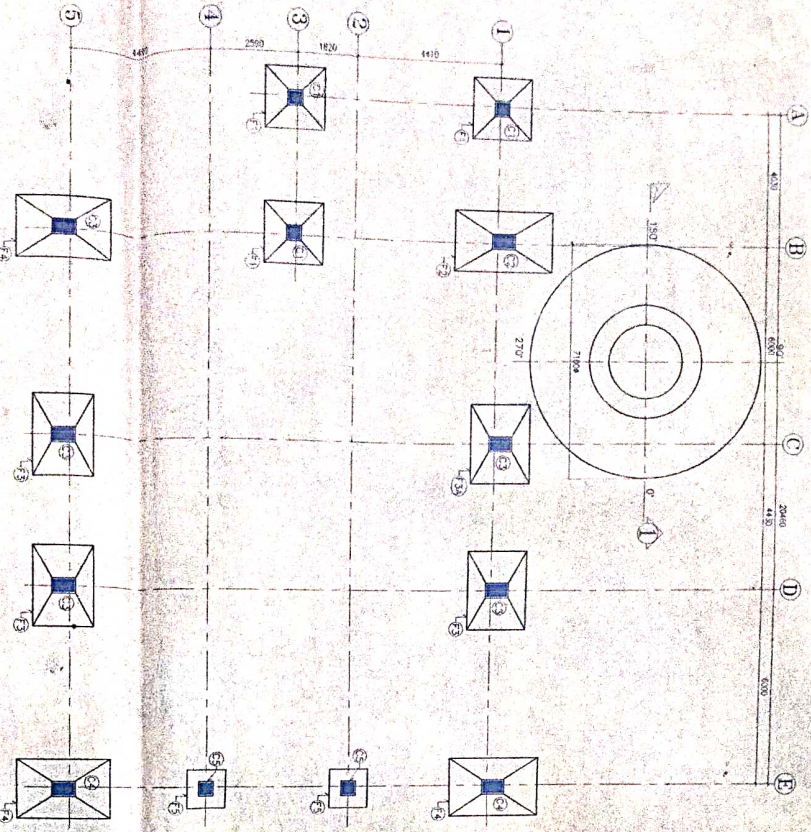
FOUNDATION SCHEDULE

TYP. PLAN

SECTION 11

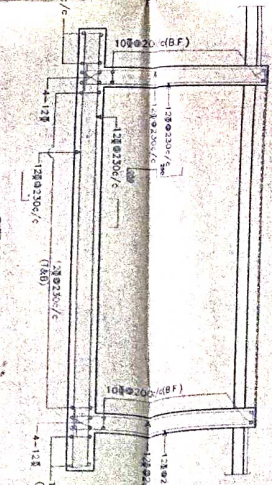
PLAN AT 12.40M LEVEL

PLAN AT FOUNDATION LEVEL  
(FOUNDATION LEVEL FOR F2, F3A FOOTING +1.40M.)

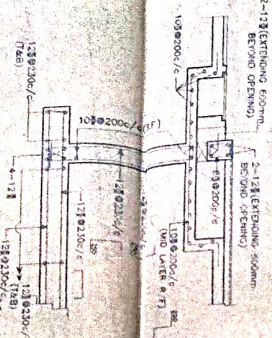


- NOTES:-
1. ALL DIMENSIONS ARE IN MILLIMETERS & LEVELS IN METERS
  2. FOR ALL OTHER NOTES REFER CIVIL GA. DRAW. NO. P039-E-00003-11

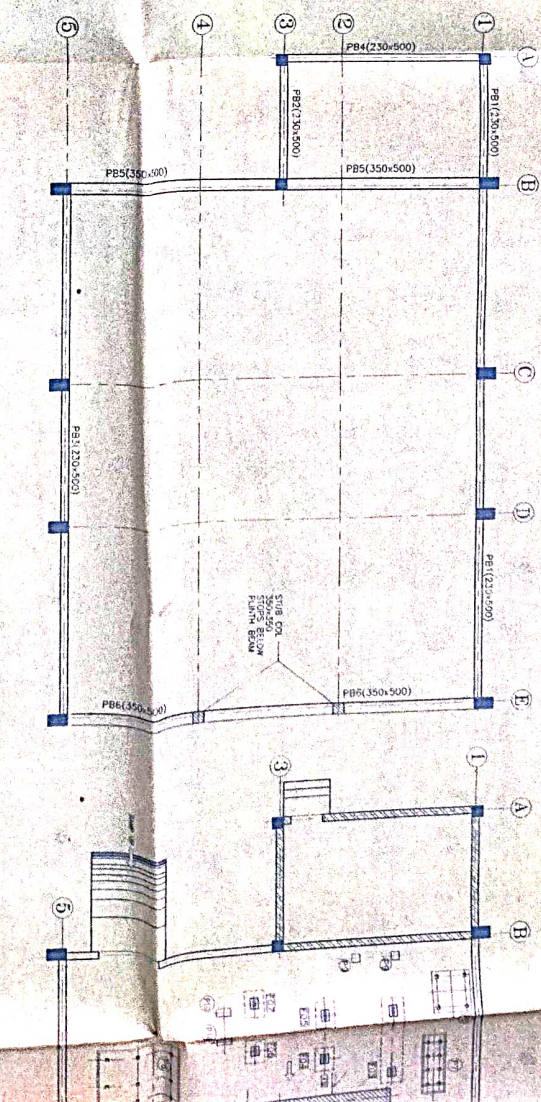
SECTION 5  
(SHOWING R/F DETAILS)



SECTION 6



PLAN AT PLINTH BEAM LEVEL  
PLINTH BEAM TOP +5.0M U.N.O



- LEGEND:-
- TOC = TOP OF CONCRETE
  - U.N.O = UNLESS NOTED OTHERWISE
  - TRP = TYPICAL
  - S = SPAN
  - F.G.L = FINISHED GROUND LEVEL
  - E.G.L = EXISTING GROUND LEVEL
  - F.F.L = FINISHED FLOOR LEVEL
  - T.P.P./T.NEAR FACE = TOP R/F / NEAR FACE
  - B.T.P.P./T.FAR FACE = BOTTOM R/F / FAR FACE

P-39-E-0003-03	ARCH PLAN ELEVATIONS & SECTIONS OF BIER N
P-39-E-0004-19	SOILER HOUSE CUSTOMER DETAILS
P-39-E-0005-11	CIVIL GA FOR BIER N HOUSE
P-39-E-0006-11	MECHANICAL GA FOR BIER N HOUSE
P-39-E-0007-01	GAUNT FOR SEA WATER TREATMENT PLANT
0000000000	TITLE
0000000000	DRAWING NO.
0000000000	DATE
0000000000	PROJECT NAME

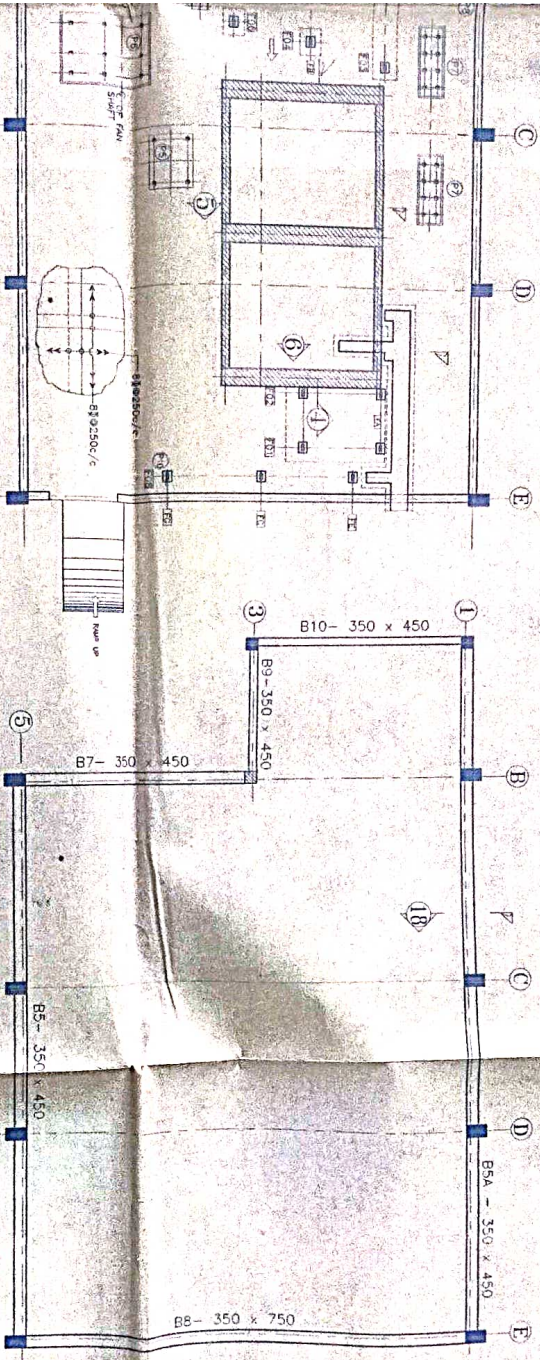
TYPICAL  
DETAIL TO HA  
BEARING ON

TYP. INTEL. DETAIL  
INTEL TO HAVE MIN. 230. mm  
SPACING ON EITHER SIDE.

TYP. COL. BEAM  
ANCHORAGE DETAIL  
WHERE 'D' IS BAR DIAMETER

TYP. COL. ELEVATION  
(WHERE 'D' IS BAR DIAMETER)

F.3A	F.4	F.5	F.6	F.7	F.8	F.9	F.10	F.11	F.12	F.13	F.14	F.15
190	420	700	350	600	150	120	180	45/6	100000/6			
280	420	700	350	600	150	120	180	45/6	100000/6			
1000	420	450	300	350	290	-	-	100000/6	100000/6			



PLAN AT GROUND FLOOR LEVEL

PLAN AT 10.95M [BOTTOM OF BEAM] LEVEL

APPROVED IN CODE-A VIDE LETTER  
REF.No. 210-AK-HYD-18A Dated 19.11.02

**AS BUILT**

AKRIMOTA THERMAL POWER STATION  
STAGE-II UNITS # 1 & 2 ( 125 MW)

OWNER	GUJARAT MINERAL DEVELOPMENT CORPORATION LIMITED
CONSULTANT	DESEIN PRIVATE LIMITED CONSULTING ENGINEERS
CONTRACTOR	VA TECH WABAG VA TECH A THOMSON COMPANY A MEMBER COMPANY OF BHEL

TITLE	R/F DETAILS FOR BOILER HOUSE
DRG. NO.	PO39-E-C0006-11
REV.	0
DATE	24-03-2002
SCALE	1:100 (A0,25)
DRG. SITE	- A0
DRG. REF.	CONTRACTS/GMDC/DRG. & DEC/CHILL/DRG. EDD/5-16

REV.	DATE	BY/CHK/DT	REASON/DT	FOR APPROVAL	REVISIONS	APPROVAL	SPACE FOR STAMP/DT APPROVAL
0	24-03-02	AV/MSR	MSR/VA	MSR	FOR APPROVAL	MSR/VA	

## Annexure 4

### **RECOMMENDED BRANDS OF PRINCIPAL CONSTRUCTION MATERIALS / CHEMICALS TO BE USED FOR THE REPAIR PROJECT**

Unless otherwise approved the following brands of Construction materials/ Chemicals shall

<b><u>NAME OF CHEMICAL</u></b>	<b><u>ALTERNATIVE-I FOSROC</u></b>	<b><u>ALTERNATIVE-II ROFFE</u></b>	<b><u>ALTERNATIVE-III SUNANDA</u></b>	<b><u>ALTERNATIVE-IV DR.FIXIT (PIDILITE)</u></b>
RUST REMOVAL	REEBAKLEN RR NITAZINC PRIMER	RUST CLEAR AND RUST CLEAR ZR (ZINCRICH)	RUSTICIDE - SS	DR. FIXIT EPOXY ZINC PRIMER
PASSIVATOR COAT	NITOCOAT AP 35	SUPER CRETE - XL	POLY ALK FIXOPRIME	PAGEL MS O2
BOND COAT	NITOBOND AR STD	SUPER CRETE - XL	POLY ALK - EP	DR. FIXIT PIDICRETE URP/MPB
ACRYLIC BASED POLYMER	NITOBOND AR STD	SUPER CRETE - XL	POLY ALK - EP	DR. FIXIT PIDICRETE URP/MPB
EPOXY RESIN + HARDENER	-----	-----	SUNEPOXY 358	-----
MICRO CONCRETE	RENDROC RGL	ROFFE CRETE REPAIR	POLYCRETE -A	DR. FIXIT MICRO CONCRETE
HACK FREE BONDING	NITOBOND AR STD	PLASTER BOND	HACK AID PLAST	DR. FIXIT CONCRETE SUPERBOND
GROUTING ADMIXTURE	CEBEX 112	-----	SUNPLEX	DR. FIXIT PIDICRETE AM
W/P ADMIXTURE A) PLASTER ADMIXTURE B) TERRACE-W/P C) CHAJJA - IPS	CEBEX 112 AND CONPLAST WL	PLASTER MASTER AND HY PROOF	POLYTANCRETE-IWL	DR. FIXIT PIDIPROOF LW+ AND DR. FIXIT POWER WATER PROOF
SUPER PLASTICIZER	CONPLAST P211	PLAST 330	SUNPOLICRETE NGT	DR. FIXIT TONIC
CRACK FILLING WORKS	RENDROC CS	PLASTER COAT	POLYFILL-AR	DR. FIXIT CRACK - X POWDER
WATERPROOF ADMIXTURE (LIQUID)	CONPLAST WL	HY PROOF	POLYTANCRETE-IWL	DR. FIXIT PIDIPROOF LW+
WATERPROOFING COATING (POWDER/ LIQUID)	WP 90	HYTITE	POLYALK WP	DR. FIXIT KRYSTALINE
POLYSULPHIDE SEALANT	NITOSEAL AND DECOFILL	-----	SUNJOINT SEAL	DR. FIXIT GAPFILL

**Note:- If alternative materials are to be used it should be only after obtaining prior approval of the Consultant in writing.**

EXTERIOR PAINT TEXTURISED BASED	SANDTEX / NITCOTEX
ELASTOMERIC PAINT	DR FIX IT RAIN COAT / OUTSMART WWP OF SHERWIN WILLIAMS/ ULTIMA PROTEK OF ASIAN PAINT
100% ACRYLIC EMULSION EXTERIOR PAINT	ASIAN / ICI/ SNOWCEM / BERGER / J & N/ NEROLAC
CEMENT BASED PAINT	SUPER SNOWCEM / NITCOCEM
ENAMEL PAINTS	ASIAN / NEROLAC / J & N / ICI
GREY CEMENT	L & T, AMBUJA, BIRLA, ACC.
WHITE CEMENT	BIRLA /J.K.
CAST IRON PIPES	NECO/SIL
G.I. PIPES	TATA MAKE 'C' CLASS/ ZENITH 'C' CLASS
PVC DRAIN PIPES/FITTINGS	ASTRAL/ SUPREME / PRINCE
TAPS & VALVES	APPROVAL MAKE WITH ISI MARK.