

**NOTICE INVITING TENDER**

**TENDER NO: GMDC/PD/PAN/ELECT/31/2021-22**

**GMDC proposes to carry out 11KV Electrical works with supply of material at Panandhro Lignite Project at VILL. PANANDHRO, TAL. LAKHPAT, DIST. KUTCH, GUJARAT.**

**The proposed Work is of "Complete Design, Supply, Erection & Commissioning of Outdoor Ring Main Units Panels with 11KV VCB, 8 KM long 11KV OH lines, lighting transformers, chemical earthing and shifting of 1 nos. 315KVA 11/. 433 KV transformers and its LT MCC works".**

**Prospective bidders may please download the Tender Document of TENDER NO. GMDC/PD/PAN/ELECT/31/2020-21 from website <https://gmdc.nprocure.com> & [www.gmdcltd.com](http://www.gmdcltd.com)**



**GM (Power)  
GUJARAT MINERAL DEVELOPMENT CORPORATION LTD.  
CIN : L14100GJ1963SGC001206  
GST : 24AAACG7987P1ZT  
(A Govt. of Gujarat Enterprise)  
KHANIJ BHAVAN, 132' RING ROAD, NR. UNIVERSITY GROUND  
VASTRAPUR, AHMEDABAD 380 052  
☎ EPABX : 27913501, 27913200  
E-mail : [power@gmdcltd.com](mailto:power@gmdcltd.com) ; [jndave@gmdcltd.co.in](mailto:jndave@gmdcltd.co.in)  
Website : [www.gmdcltd.com](http://www.gmdcltd.com)**

---

## CONTENT

TENDER NOTICE.....	3
CHAPTER I: BRIEF INTRODUCTION.....	5
CHAPTER II: INSTRUCTIONS TO THE BIDDERS.....	6
CHAPTER III: INSTRUCTIONS TO BIDDERS FOR ONLINE TENDERING.....	12
CHAPTER IV: CRITERIA FOR EVALUATION OF TECHNICAL BIDS.....	14
CHAPTER V: SCOPE OF WORK.....	16
CHAPTER VI: TERMS AND CONDITIONS OF THE TENDER.....	41
FORMS A TO K.....	52
PRICE BID FORM- AA (To be submitted online/ to be inserted by respective dept.....	65
FORMAT OF BANK GUARANTEE.....	68
ANNEXURE-I.....	71
SINGLE LINE DIAGRAM.....	72

## TENDER NOTICE

TENDER NO. GMDC/PD/PAN/ELECT/31/2021-22

### 1. Summary of the Tender

<b>Place of work</b>	Panandhro Lignite Project, At/Po- Panandhro Tal- Lakhpat, Dist-Kutch, Gujarat State.
<b>Brief Description of work</b>	Complete Design, Supply, Erection & Commissioning of Outdoor Ring main Units panels with 11KV VCB, 8 KM long 11KV OH lines, lighting transformers, chemical earthing and shifting of 1 nos. 315KVA 11/.433 KV transformer and its LT MCC work
<b>Item wise Quantity.</b>	As per scope of work - chapter V
<b>Period of contract</b>	Six Months from date of commencement of work
<b>Estimated Contract Value</b>	Approximately Estimated Price: Rs 1,14,70,000/- (Rupees One Crore Fourteen Lakhs Seventy Thousand Only )
<b>EMD</b>	<p><b>Rs.1,15,000.00 (Rupees One Lakh Fifteen thousand Only) in Form of</b></p> <ul style="list-style-type: none"><li>• DD in favour of GMDC Ltd. From Government of Gujarat approved Bank except co-operative bank in favor of GMDC Ltd. payable at Ahmedabad and to be submitted along with technical bid only; failing which tender will not be considered as valid tender and bid will be rejected.</li></ul> <p><b>or</b></p> <ul style="list-style-type: none"><li>• Bank Guarantee issued by banks approved by Govt. of Gujarat from time to time (except Co-Operative bank) in the form and manner acceptable to GMDC.(Govt. GR is annexed at <b>Annexure-I</b>). It should be valid for a period of not less than 6 (six) months from the date of opening of the bids.</li></ul> <p><i>Relaxation in terms of submission of EMD shall be given to the bidder who is holding valid Certificate issued under the MSME Act, 2006 on the date of submission of Bid.</i></p>
<b>Tender Processing Fee</b>	<p>Rs. 15000 (Fifteen Thousands only) plus GST @18% aggregating to Rs.17700/-payable by Demand Draft drawn in favor of "GMDC Ltd." payable at Ahmedabad.</p> <p><i>Relaxation in terms of submission of Tender Processing Fees shall be given to the bidder who is holding valid Certificate issued under the MSME Act, 2006 on the date of submission of Bid.</i></p>
<b>Availability of Tender document</b>	On web site <a href="http://www.gmdcltd.com">www.gmdcltd.com</a> ; <a href="https://gmdc.nprocure.com">https://gmdc.nprocure.com</a>

Downloading of tender document from websites	From DT.: 07.01.2022
Last date of submission of written request for clarification if any, on Bid Document	DT. 16.01.2022 up to 18.00 Hrs. on <a href="https://gmdc.nprocure.com">https://gmdc.nprocure.com</a> only.
Pre Bid Meeting	All the prospective bidders are requested to attend the Pre-Bid Meeting on DT. 17.01.2022 at 12:00 Hrs. at Corporate Office, GMDC, Ahmedabad (Gujarat). Maximum two members per bidder will be allowed for the Pre-Bid meeting.
Last date of on line submission of offer	DT. 31.01.2022 up to 18.00 Hrs. on <a href="https://gmdc.nprocure.com">https://gmdc.nprocure.com</a> only.
Submission of Tender processing fee, EMD and Supporting documents for Tech. bid	DT. 31.01.2022 up to 18.00 Hrs. at Corporate office, Ahmedabad.
Date and time for online opening and viewing of preliminary bid.	DT. 01.02.2022 up to 12.00 Hrs.

2. GMDC reserves absolute right/discretion to accept and/or reject any or all the tenders received or invite fresh bid at any stage or **split the work between more than one Bidders** as the case may be.
3. The Bidders are required to quote the rate strictly as per the terms and conditions mentioned in the Tender document. Conditional tender shall not be entertained and will be rejected summarily without assigning any reasons, whatsoever.
4. GMDC may issue amendments/corrigendum in the tender documents, schedule, forms etc. at any time during the period between publication of notice and submission of bids of the tender on website. The Bidders in their own interest are advised to visit the website regularly till the last date of submission of the bid. No separate newspaper advertisement will be released for amendments/corrigendum.
5. GMDC reserves the rights to modify or alter any Condition of the Tender.
6. The Bidders are advised to submit their price bid online on <https://www.gmdc.nprocure.com> only. Physical price bid shall not be accepted and shall be rejected summarily without assigning any reasons, whatsoever.
7. Failure to submit bid online in stipulated time due to any reason whatsoever by any Bidder shall result in disqualification of bid. In such circumstances, bid submitted physically along with supporting documents, tender processing fees, EMD amount etc. shall not be considered as bid submitted and the same will be returned back to the Bidder without opening the same. GMDC reserves the right to take suitable decision in this regard.

## **CHAPTER I: BRIEF INTRODUCTION**

### **1. GMDC:**

Gujarat Mineral Development Corporation Limited herein after referred to as GMDC, a Government of Gujarat Enterprise, is a pioneer institution in the field of mining for more than five decades, catering to the needs of the minerals and solid fuel for the industries based in Gujarat. GMDC's mining activities are spread all over Gujarat. It is currently dealing in minerals like Lignite, Bauxite, Fluorspar, Ball Clay, Silica sand and Manganese. GMDC has also set up a 250 MW lignite based Thermal Power Station at Nani Chher in Kutch, Wind power plant of 200 MW at Maliya, Jodiya, Godsar, Bhanvad, Bada, Varvada, Rojmal and Solar Power plant of 5 MW at Panandhro Project.

### **2. LOCATION OF PROJECT:**

The Panandhro Lignite Project is located at Panandhro of Lakhpat Taluka in Kutch District of the Gujarat State. The project is located about 140 kms from Bhuj. The nearest Railway Station and Airport is at Bhuj.

### **3. TENDER DOCUMENT PROCESSING FEE:**

The tender documents can be downloaded from our web site [www.gmdcltd.com](http://www.gmdcltd.com) and <https://gmdc.nprocure.com/>. The cost of tender processing fee is to be paid at the time of submission of supporting document of technical bid in the form of demand draft of Rs 15000/- plus GST @ 18% (Rs. 2700) aggregating Rs 17700/- as mentioned in tender notice, in the sealed technical bid cover. If the amount mentioned in the DD is found short, the tender will not be considered for scrutiny and will be out rightly rejected.

***Relaxation in terms of submission of Tender Processing Fees shall be given to the bidder who is holding valid Certificate issued under the MSME Act, 2006 on the date of submission of Bid.***

## **CHAPTER II**

### **INSTRUCTIONS TO THE BIDDERS**

1. The Bidders are advised to read carefully all the instructions, evaluation norms and other terms and conditions described in these documents under different Chapters carefully before submitting their offer.

#### **2. SITE VISIT:**

2.1. Bidder is advised to visit the site to study the actual working conditions, before submission of the bid and shall have to give undertaking that bidder is well aware & conversant of the mines project condition and will not give any excuse for not execution of the contract at later stage. The information/details given in the tender document are only to describe the magnitude of work and are for mere guidance to the Bidders. The project works are under the charge of I/c.General Manager (Project), Lignite project, Panandhro and his email is: [panandhro@gmdcltd.com](mailto:panandhro@gmdcltd.com) / [hgdave@gmdcltd.co.in](mailto:hgdave@gmdcltd.co.in)

2.2. Any neglect or failure on the part of the Bidder in obtaining necessary and reliable information upon the foregoing or any other matters affecting the contract shall not relieve him from any risks or liabilities or the entire responsibility from completion of the work at the contracted rates and time in strict accordance with the contract documents.

#### **3. THE TENDER DOCUMENTS & EVALUATION:**

3.1. It is a three stage bid evaluation system. It is mandatory that the bids are first submitted on-line at <https://gmdc.nprocure.com> by the date and time prescribed in the tender notice as above. Representation on account of failure to submit bid online in stipulated time due to any reason whatsoever by any Bidder shall not be entertained.

##### **A. Stage – I Preliminary Evaluation of Bid**

Before taking up evaluation of Technical Bid, a preliminary evaluation of the bid submitted online along with the details of tender processing fee and EMD etc. would be taken up. Only those bids, which have been received online along with relevant prescribed documents, would be taken for the next stage of evaluation of Technical bids.

##### **B. Stage - II Evaluation of Technical Bid**

After preliminary bid evaluation, Technical evaluation of the bid documents, as listed below, submitted on-line would be taken up. Tender processing fee and EMD will be submitted in the sealed cover super-scribed as "Technical Bid for TENDER NO GMDC/PD/PAN/ELECT/31/2021-22 and Name of work: "11KV Electrical works with supply of material at Panandhro Lignite Project"

Bidders are required to submit below mentioned documents separately at GMDC Corporate Office, Ahmedabad before stipulated time.

**List of the Documents to be submitted online & physically:**

Sr. No.	Document	Submission
1	<b>FORM-A</b> check list of documents enclosed with tender	Physical
2	<b>FORM-B</b> Status of the Bidder	Physical
3	<b>FORM-C-1</b> Details of Work Carried Out During The Last Seven Years By The Bidder*	Physical
4	<b>FORM C-2</b> Details of work carried out should be provided as per FORM C-2 provided in the tender Document*	Physical
5	<b>FORM C-3</b> Details of Bidder as per the format provided in <b>Form C-3</b> of the Tender Document*	Physical
6	<b>FORM D- No Demand Certificate</b>	Physical
7	Declaration of not Black listed as per the format provided in <b>Form E</b> of the Tender Document	Physical
8	Undertaking of Genuineness of Document as per format provided in <b>FORM F</b> of the Tender Document	Physical
9	CA Certificate of Net worth, Turnover and Working Capital as per format provided in <b>FORM G</b> of the Tender Document	Physical
10	Undertaking of Indemnity as per format provided in <b>FORM H</b> of the Tender Document.	Physical
11	Undertaking/declaration of site visit as per format provided in <b>FORM I</b> of the Tender Document.	Physical
12	Declaration of unconditional offer as per format provided in <b>FORM J</b> of the Tender Document.	Physical
13	Declaration regarding unconditional acceptance of all the terms and conditions of the Tender documents per format provided in <b>FORM K</b> of the Tender Document	Physical
14	Power of Authority to sign the documents	Physical

Submission of false or incorrect information, reports of unprofessional conduct, failure in executing such kind of work in past among other things, shall be sufficient grounds for disqualification in technical bid.

**C. Stage – III Price-Bid**

- (a) The Bidders must submit a **Price Bid only on-line** before the stipulated time. Price bid of all Bidders whose Bids meet the prescribed technical requirements, would be taken up for opening at this stage of the Bidding process. If the Price –bid is submitted in the physical format, the tender will not be taken up for scrutiny and will be out rightly rejected.
- (b) If the EMD and tender processing fee are not found in the sealed technical bid document cover in the required form and manner or if the amount thereof is found short, the tender will not be considered for technical scrutiny and will be out rightly rejected.

- (c) All the supporting documents submitted with the tender shall be genuine and correct. If it is found at any point of time that the said documents were not genuine then in that case the tender will be rejected, earnest money will be forfeited and the Bidder may be debarred from participating in further/future GMDC's tender as per the provisions of **FORM H**.
- (d) To assist in the scrutiny, evaluation and comparison of bids, GMDC may, at its discretion, seek from any or all Bidders, clarification(s) on his/their Bids, including technical information, documents and materials after the Technical Bid Opening but before opening of the Price Bid (Stage-III) but no change in the final price or substance of the bid shall be permissible.

**4. OPENING OF BIDS AND DETERMINATION OF THE LOWEST (L1) BID:**

- 4.1.** E-tendering procedure is explained in Chapter – III.
- 4.2.** For Preliminary evaluation, the bids will be opened for verification of receipt of payment towards tender processing fee and EMD. The Bidders will be able to view it on their computers after opening of the same. On verification of the supporting documents as per requirement of the tender, technical qualification of the Bidders will be assessed. Technically qualified Bidders will be communicated the date and time of on-line opening of price bids by telephone or email. However, all the Bidders will be able to view the price bids on-line on their computers as well.

**4.3. Evaluation of the Price Bid:**

For tender evaluation, total amount of the bid for all the works and supply of material shall be determined and overall lowest bidder shall be considered for determining L1 bidder.

- (a) L1 Bidder may be called for negotiation.
- (b) After negotiation with L<sub>1</sub> bidder and finalization of the rates for the works with the L<sub>1</sub> bidder, If L<sub>1</sub> bidder disagrees/ discontinues the contract, GMDC may ask L<sub>2</sub> bidder to carry out the works at the rate finalized with the L<sub>1</sub> bidder for the certain/equally distributed quantities of the works. In case of refusal by the L<sub>2</sub> bidder to accept the offer, GMDC reserves the right to select the next Bidder. Decision of GMDC in selection of the bidder is final and bound to all the bidders.

**5. Price Bid:**

FORM-AA

**FORMAT FOR PRICE BID**  
**(To be submitted online)**

Sr. No.	Description	UOM	Quantity	Supply Rate/ unit	Total supply price (Rs)	Erection and Commissioning charge including Civil work, labour, supervision , etc per unit	Erection and Commissioning charge including Civil work, labour, supervision, etc	Total cost
			A	B (Rs)	C=A x B (Rs)	D(Rs)	E=A x D (Rs)	F=C+E (Rs)

1	11 KV (1+4) way outdoor 630Amp RMU panel with 800Amp 5nos. Draw out type VCB	Lot	1					
2	11 KV (1+1) way outdoor 630Amp RMU panels with 1 nos. Draw out type 630amp VCB each	Nos.	5					
3	Chemical Earthing Pit with 3mtrx70sq.mm Earthing	Nos.	56					
4	25KVA lighting transformer 3 Phase 440V/230V AC phase to phase volts with LV side Grounded Neutral, , 50Hz	Nos.	5					
5	2pole structure with 200A Air Break Switch with lightening arresters	Nos.	12					
6	11KV 3 pole OH line (With Poles, Insulators, 50sqmm OH conductors , arms, Tie, Support, etc)	km	8					
7	Disconnection, Dismantling, shifting and Assembling and erection and Tasting, commissioning of existing one 315KVA transformer along with its LT MCC including construction of 1 room building of 10 feet X 12 feet Brick-cement wall with asbestos sheet roof. 1door, 2 window with natural ventilation	Lot	1	NA	NA			
8	Detailed project report preparation, design, plan including the open mines route and getting approval from the statutory authorities like Electrical Inspector, Directorate General of mines safety (DGMS), etc	PKG	1	NA	NA	NA	NA	
Grand Total (Rs) Excluding GST				NA	NA	NA	NA	

**Note:**

- Quoted Price shall be exclusive of GST and inclusive of all other Taxes and other expenses.**
- There shall be no Escalation on firm rate of contract and shall remain valid for the entire period.**

3. **It is mandatory to quote rate for all the items mentioned in the price bid. Bidders who won't quote rate for any of the item(s) shall be rejected.**

**Rate inclusive of all Taxes except GST**

**Name of the Bidder:**

**Address & Contact Details of the Bidder:**

**Signature of the bidder with Seal & Date**

- 5.1.** Bidders are requested to quote their Rate as per Price-Bid Form-AA for the works, supply of materials, etc. Bidders has to quote rates for all the items of the schedule if bidder fails to submit the rate for any of the item then their bid will not be considered and out rightly rejected.

The bidder shall have to carry out the Complete Design, Supply, Erection & Commissioning of Outdoor Ring Main Units Panels with 11KV VCB, 8 KM long 11KV OH lines, lighting transformers, chemical earthing and shifting of 1 nos. 315KVA 11/.433 KV transformer and its LT MCC work as per the scope of works & supply of materials. The essence of this contract is to carry out above works with specialized manner within time period of six months from date of commencement of work.

- 5.2.** While submitting the price bid electronically, Bidders are requested to quote their Rate for the work with supply of materials inclusive of all taxes except Goods and Service Tax.
- 5.3.** There shall be no Escalation on firm rate of contract and shall remain valid for the entire period of the contract.
- 5.4.** The Bidders are required to quote the rates strictly as per the terms and Conditions mentioned in the tender. Any conditional tender will not be entertained and shall be summarily rejected. Rate quoted shall remain valid for 90 days from the date of opening of the technical bid, which shall be deemed extended unconditionally for further period of 90 days, if GMDC requires it.
- 5.5.** Payment to be made to the Successful Bidder will be based on -
1. The payment shall be made as per actual works carried out or material supplied after deduction of LD, if any.
- 5.6.** Any other fresh imposition or variation in existing taxes or levies during the currency of the contract by the Govt. if applicable after submission of the bid and payable by the Successful Bidder, shall be reimbursed by GMDC on actual subject to submission of documentary proof of having remitted the same and to the extent directly related to the services rendered by the Successful Bidder under this contract. This shall be subject to submission of documentary proof clearly mentioning the name of work and respective invoice No.
- 5.7. GOODS & SERVICE TAX (GST):**
- a. All bidders are required to submit their GST number and date in the bid. Bid received from unregistered bidder will not be considered and out rightly rejected.

- b. Bidders are requested to quote their rates without GST. GST will be paid/adjusted/reimbursed to the Successful Bidder as per prevailing rates and rules to the extent directly related to the services rendered OR Goods supplied by the Successful Bidder under the said contract subject to production of documentary proof and Successful Bidder will mention the GST amount separately in the invoice/bill along with SAC/HSN Code under GST.

**6. ACCEPTANCE OF LETTER OF INTENT & PAYMENT OF SECURITY DEPOSIT:**

GMDC, on acceptance of the offer, will issue Letter of Intent to the Successful Bidder; that will be required to confirm its acceptance of the LOI within 7 days from the date of receipt. If it does not accept the LOI within stipulated time period, the amount of the EMD paid will be forfeited and necessary further actions may be initiated as may be deemed fit by the GMDC. Successful Bidder shall submit the Security Deposit in the manner prescribed in Chapter No-VI of the Tender Document. In case of failure to submit the security deposit, the amount of EMD will be forfeited and necessary further actions may be initiated as may be deemed fit by the GMDC.

**7. CONTRACT AGREEMENT AND COMMENCEMENT OF WORK:**

After acceptance of the LOI, Work Order will be issued by GMDC and Successful Bidder shall have to the work within 15 days after acceptance of LOI.

**GENERAL:**

- 7.1. If the tender documents and forms referred to in the tender are not submitted or are submitted but not found duly filled in and unsigned, will result in rejection of the tender.
- 7.2. Canvassing in any form may lead to rejection of the offer.
- 7.3. Bids once submitted shall not be returned and shall remain the property of the GMDC.
- 7.4. The Bidder who have earlier been awarded contract by the GMDC for any job which they either did not accept or have abandoned or contract has been terminated by the GMDC for breach of conditions, shall not be eligible to participate in this tender.
- 7.5. Bidder shall have to quote for all the items of the tender as this is being composite tender for intended purpose.

**8. CORRIGENDUM:**

**Corrigendum if any shall be uploaded on the website <https://gmdc.nprocure.com> only.** Please note that there is no provision to take out the list of parties downloading the tender document from the above referred website. As such, Bidders are requested to see the website from time to time before due date of submission of bid to ensure that they have not missed any corrigendum uploaded against the said tender after downloading the tender document. The responsibility of downloading the related corrigendum, if any, will be that of the downloading parties. No separate intimation in respect of corrigendum will be sent to Bidders who down loaded the tender document from the website as information in this respect will not be available to websites.

**CHAPTER – III**  
**INSTRUCTION TO BIDDERS FOR ONLINE TENDERING**

1. Tender documents are available only in electronic format which Bidders can download from the website [www.gmdcltd.com](http://www.gmdcltd.com) and <https://gmdc.nprocure.com>
2. All Bidders must submit their bid online through the website <https://gmdc.nprocure.com> only. No physical submission of price bid will be entertained as it should be furnished on-line only. No fax, e-mail, letters will be entertained for bidding the same.
3. Following should be submitted 'off-line' in sealed covers separately at our Corporate Office, Khanij Bhavan, 132 Ft Ring Road, Vastrapur, Ahmedabad.
  - i. Tender Processing Fee,
  - ii. E.M.D.
  - iii. Supporting Documents
4. Bidders who wish to participate in online tenders will have to procure / should have legally valid Digital Certificate (Class III) as per Information Technology Act-2000, using which they can sign their electronic bids. Bidders can procure the same from any of the license certifying Authority of India or can contact (n) code solutions- a division of GNFC Limited, who are licensed Certifying Authority by Government of India at address mentioned below at clause 5.
5. All bids should be digitally signed. For details regarding digital signature certificate and related training involved at the below mentioned address should be contacted:

Address:  
**(n)Procure Cell**  
**(n)Code solutions A division of GNFC**  
**403, GNFC Info-Tower, Bodakdev,**  
**Ahmedabad- 380 054 (India)**  
**Tel: +91 26857316/17/18 Fax: +91 79 26857321**  
**Toll Free: 1800-233-1010**  
**E-mail: nprocure@gnfc.net**
6. Kindly take note that, valid Digital Signature Certificates is a must for all the interested Bidders. Online tendering process is not possible without a valid digital signature certificate.
7. Interested Bidders are also requested to complete their procedure for taking digital signature certificate in respect to filling of application form, supporting documents with necessary fees at least 3 days before last date of tender submission.
8. (n) code solutions reserves the rights to issue digital signature certificate after verification of application forms / supporting documents submitted by Bidder. (n) Code solutions is fully authorized to issue digital signature certificate to Bidders.
9. Bidders who have no facility to participate in on-line tenders are requested to contact (n) code solutions for the same.

10. Free vendor training camp will be organized every Saturday between 4.00 to 5.00 P.M. at (n) code solutions-A Division of GNFC Ltd. at address mentioned above at Clause No. 5 of Chapter No-III. Bidders are requested to take benefit of the same.
11. All the correspondence in respect to training, support or digital signature certificate should be addressed to (n) code solutions directly on the above mentioned address. In case the Bidders face any difficulty, they may contact the officials of the GMDC or GNFC on the below mentioned details:
  - a. GMDC:
    - i. Contact Person: General Manager (Power Project)
    - ii. E-Mail: [power@gmdcltd.com](mailto:power@gmdcltd.com) ; [jndave@gmdcltd.co.in](mailto:jndave@gmdcltd.co.in)
  - b. GNFC:
    - i. Contact Number: 079- 26857316/17/18
    - ii. E-Mail:nprocure@gnfc.net

**CHAPTER IV**  
**CRITERIA FOR EVALUATION OF TECHNICAL BIDS**

**1. EXPERIENCE:**

- 1.1 The Bidders should have following minimum experience of having successfully completed similar works during last 7 (seven) years ending last day of November, 2021
- A. Three similar completed works, each having amount of Rs 45, 88,000/-or more during last 7 (seven) years ending last day of November, 2021
- Or**
- B. Two similar completed works, each having amount of Rs 57, 35,000/-or more during last 7 (seven) years ending last day of November, 2021.
- Or**
- C. One similar completed work having amount of Rs 91, 76,000/-or more during last 7 (seven) years ending last day of November, 2021.

Similar works means the Bidders should have experience in one or more works like 11 KV - switchyard, RMU, CSS, OH lines, etc , and Erection and commissioning with supply of material and should have been carried out under the single LOI/Work Order/Agreement.

- 1.2 Bidder shall submit the details of work completed to Clause No.1 of Chapter no. IV as per FORM C-1 and FORM C-2 as provided in the Tender Document.

**Note:**

- i. Separate Statement of experience with work orders and work executed certificates duly certified by the certificate issuing authority shall be submitted with the supporting certified documents.

**2 FINANCIAL CRITERIA:**

- 2.1 Bidder must have a positive Net Worth for last 3 continuous years of as on **31/03/2021**.
- 2.2 Bidder must have a Minimum Average Turn Over of **Rs 34,41,000/-**for financial year of **2018-19, 2019-20 and 2020-21**
- 2.3 A certificate from Chartered Accountant regarding Financial capacity shall be submitted as per format provided in **FORM G** of the Tender Document.

**3. CONSORTIUM / JOINT VENTURE:**

CONSORTIUM / JOINT VENTURE are not allowed. However, sub-contracting is allowed with prior approval of GMDC Management.

**4. ACCEPTANCE OF ALL THE TERMS AND CONDITIONS:**

The Bidder should submit the declaration regarding unconditional acceptance of all the terms and conditions of the Tender document including Annexure and Corrigendum if any as per **FORM K** provided in the Tender Document.

## 5. EMD:

A non-interest bearing Earnest Money Deposit of **Rs.1,15,000.00 (Rupees One Lakh Fifteen Thousand Only)** shall be paid along with the tender, enclosed with Technical Bid documents in sealed cover super scribed "TECHNICAL BID", in the form of Demand Draft/ Pay order in favour of GMDC Ltd. payable at Ahmedabad

Or

Bank Guarantee issued by banks approved by Govt. of Gujarat from time to time (except Co-Operative bank) in the form and manner acceptable to the GMDC valid for a period of not less than 6 (six) months from the date of opening of preliminary bid. Any tender submitted without Earnest Money Deposit in the desired form or inadequate amount of EMD shall be summarily rejected and no claim shall be entertained on such rejected tenders. List of the banks approved by Govt. of Gujarat is as per Annexure- I.

***Relaxation in terms of submission of EMD shall be given to the bidder who is holding valid Certificate issued under the MSME Act, 2006 on the date of submission of Bid.***

## 6. DECLARATION

The Bidder should give a declaration that it has not enclosed any conditional offer as per the format provided in **FORM L** of the Tender Document.

## 7. BLACKLISTING OF THE BIDDER:

The Bidder or its directors have not been blacklisted by any Government Organization, nor should any litigation be pending against any of them. The Bidder will submit a declaration to this effect as per the format provided in **FORM E** of the Tender Document. If at any time such declaration is found false, the bid will be rejected or if the contract work is already awarded, it will be terminated forthwith without payment of any compensation and the EMD/SD will be forfeited.

## 8. SITE VISIT CERTIFICATE:

The Bidder should give a declaration about having acquaintance with site as per the format provided in **FORM I** of the Tender Document.

## 9. Other declarations/Forms: Bidder shall submit Other Declarations/Forms as mentioned in the list of documents to be submitted at clause no. 3 B of Ch.-II of tender document.

## **CHAPTER V** **SCOPE OF WORK**

### **THE SUCCESSFUL BIDDER'S SCOPE:**

The successful bidder / bidders shall be required to carry out:

"Complete Design, Supply, Erection & Commissioning of Outdoor Ring Main Units Panels with 11KV VCB, 8 KM long 11KV OH lines, lighting transformers, chemical earthing and shifting of 1 nos. 315KVA 11/.433 KV transformer and its LT MCC etc. work at GMDC, Panandhro Mines, Dist-Kutch, State – Gujarat."

#### **TECHNICAL SPECIFICATION:**

11 KV SF6 INSULATED OUTDOOR RING MAIN UNIT WITH DRAW OUT TYPE VACUUM CIRCUIT BREAKER SYSTEM RATED VOLTAGE UP TO 12 kV Configurations Required: - 11KV RMU

1. 5-way -11KV Gas (SF6) Insulated RMU with 1 nos. main incoming 630 A draw out types VCB and 4 No. Outgoing 630 A draw out types VCB – 1 LOT for outgoing lines and transformer protection with provision of Current, voltage and energy metering facility of main incomer and Current and voltage meter in outgoing VCB for all three phases.
2. 2-Way - 11KV Gas (SF6) Insulated RMU with One 630A load break switches and One 630 amp draw out type VCB of suitable rating – 5 NOs at different location for transformer protection with provision of Current and voltage for all three phases.

PLS NOTE: THE CURRENT SETTING OF VCB SHALL BE ACCORDING TO LOAD OF THE FEEDER AND ACCORDINGLY SUITABLE RELAY SHALL BE PROVIDED AND ANY CHANGE IN COMBINATION / CONFIGURATION SHALL BE EXECUTED WITH THE APPROVAL OF PROJECT ELECTRICAL INCHARGE.

- a. This Specification provides for design, manufacture, inspection and testing before dispatch, packing and delivery F.O.R. (Destination) of SF6 insulated RMUs with necessary take off terminal units for their satisfactory operation.
- b. The objective of the RMUs is for extremely small construction width, compact, maintenance free, independent of climate, easy installation, operational reliability, Safe and easy to operate, minimum construction cost, minimum site work and minimum space requirement.
- c. The RMUs shall conform in all respects to high standards of Engineering design, workmanship and latest revisions of relevant standards at the time of offer.
- d. The type of 11 KV circuit breaker shall be VCB and insulating medium for load break isolators, Earth switch, 11 KV Buses and other associated equipments should be SF6 gas.
  - Necessary current sensors / transformers for protection and metering (wherever required).
  - All necessary dry (potential-free) contacts for indications relevant to RMU monitoring status and control.

## ITEM- A: TECHNICAL SPECIFICATION FOR OUTDOOR 11 KV RING MAIN UNIT SWITCHGEAR

### **GENERAL:**

All equipment and material shall be designed manufactured and tested in accordance with the latest applicable IEC standard.

Equipment and material conforming to any other standard, which ensures equal or better quality, may be accepted. In such case copies of English version of the standard adopted shall be submitted.

The electrical installation shall meet the requirement of Indian Electricity Rules- 1956 as amended up to date; relevant IS code of practice and Indian Electricity Act-1910. In addition other rules and regulations applicable to the work shall be followed. In case any discrepancy, the most stringent and restrictive one shall be binding.

The high-tension switchgear offered shall in general comply with the latest issues including amendments of the following standards but not restricted to them.

### **SCOPE:**

Design, Engineering, Manufacture, assembly, Stage testing, inspection and testing before supply and delivery at site, Installation, testing & Commissioning of Ring Main units outdoor type SF6 filled, with various combinations of load break isolators & breakers. (including earthing- Erection of earthing by using GI strip (minimum 35mm strip) with earthing plate including cost of coal/salt to RMU).The Installation of 11KV Outdoor SF6 Insulated RMU covering erection, testing and commissioning with associated equipment including civil work, supply & laying of 11kv cable, cable jointing kit etc. of RMU. The permission of Electrical inspector and DGMS for charging of RMUs is in bidder scope. RMU fencing is in the scope of bidder. Cable termination kits, cable laying is in bidder scope.

The insulation/dielectric media inside the stainless steel welded tank should be SF6 gas. The RMUS should be Modular, non-extensible type. The Package scope of work shall include survey, design, manufacture, FAT and delivery, installation and commissioning of equipments.

Where relevant, the RMU scope of work shall be coordinated with the work to be carried out under the project's other construction packages & associated materials to the designated destinations as per this tender specification and Bill of quantities includes supply and carrying out of relevant 11KV cable termination kits per this tender specification.

Each new RMU shall be equipped with main-line load break switches and a fault passage indicator (FPI). Furthermore, to protect each of its lateral / transformer feeders, it shall be equipped with a corresponding set of circuit breakers and relay with auxiliary supply (24V DC) shall be provided.

### **GENERAL:**

The Ring Main Unit shall be installed at 11 KV junction points to have continuous supply by isolating faulty sections. The RMU shall consist of the following combinations of load break switches and Circuit breakers for a nominal voltage of 12 KV using SF6 gas as insulating and Vacuum as arc quenching medium.

The RMU and combination shall be tropicalised and outdoor metal enclosed type. The RMU metal parts shall be of high thickness, high tensile steel which must be grit/short blasted, thermally sprayed with Zinc alloy, phosphate or should follow the 7 tank pre-treatment process and be subsequently painted with polyurethane/PP based powder paint. The overall paint layer thickness shall be not less than 80 microns.

Relevant IE rules for clearances, safety and operation inside the enclosure shall be applicable. The enclosure shall be IP 54 and type tested for weather proof at ERDA/CPRI.

All live parts except for the cable connections in the cable compartments shall be insulated with SF6 gas. The SF6 gas tank shall be made of robotic or TIG or MIG welded stainless steel, to have the best weld quality. The gas cubicle shall be metal enclosed with stainless Steel of thickness as per IEC

Tested/ designed so as to provide safety and to avoid leakage of gas and should be provided with a pressure relief arrangement away from operator.

Both the load break switches and circuit breaker must be motorized.

The cable termination chamber of isolators and circuit breakers both should be of front access type/Round end type as per site requirement.

Any accidental over pressure inside the sealed chamber shall be limited by the opening of a pressure-limiting device in the top or rear-bottom part of the tank or enclosure. Gas will be release to the rear of the switchboard away from the operator and should be directed towards the bottom / into the trench to ensure safety of the operating personnel and the pedestrians / civilians. All the manual operations should be carried out on the front of the switchboard.

#### **GENERAL TECHNICAL REQUIREMENTS**

1. Draw out type 630 amp Vacuum circuit breakers. It should be maintenance free, having stainless steel robotically/ TIG / MIG welded enclosure for OUTDOOR RMU. However, offer with high quality of the welding which has necessary extensive leakage test with maximum leak rate of 0.075% per annum can be accepted. The RMUs to be used are only outdoor type.
2. Low gas pressure devices- 1.4 Bar pressure. 1.4 bar pressure of SF6 gas in chamber of RMU is required.
3. Live cable indicators- High operator safety.
4. Fully rated integral earthing switch on each device.
5. Back up relay with auxiliary supply (24V DC) including battery and battery charger of suitable capacity shall be provided.
6. For outdoor RMUs cable boxes shall be on front.
7. Cable testing possible without disconnection of cables.
8. Compact in dimension.
9. Circuit Breaker with back up relay with auxiliary supply (24V DC) with battery and battery charger of suitable capacity shall be provided.
10. Low pressure, sealed for life equipment, can operate at "0" (Zero) bar pressure.
11. Cable earthing switch on all switching device-standard, for operator safety.
12. Enclosure with IP 54 standard protection for OUTDOOR RMUs.
13. All live parts should be inside a stainless steel enclosure for outdoor type RMU & minimum 2 mm thickness of stainless steel robotically/TIG/MIG welded enclosure for Outdoor RMU.

## **TECHNICAL AND GUARANTEED PARTICULARS:**

The bidders shall furnish all guaranteed technical particulars as called for in Schedule "A" of this specification. Particulars which are subject to guarantee shall be clearly marked. Bids lacking information in G.T.P are liable to be rejected

The Entire units or minimum three functions of RMU shall be enclosed in a single compact metal clad, outdoor enclosure suitable for all weather conditions. The switchgear/steel gas tank shall be filled with SF6 as per IEC/IS Standards relative pressure to ensure the insulation and breaking functions. The steel gas tank must be sealed for life and shall meet the "sealed pressure system" criteria in accordance with the IEC 298 standard. The RMU must be a system for which no handling of gas is required throughout the 25 years of service life.

The RMU shall have a design such that in the event of an internal arc fault, the operator shall be safe. This should be in accordance with IEC 298 and relevant Test certificates shall be submitted with the Tender.

The offered switchgear and control gear should be suitable for continuous operation under the basic service conditions indicated below. Installation should be in normal indoor conditions in accordance with IEC 60694.

Ambient temperature – 10 degree C to + 50 degree C Relative humidity - up to 95%

Altitude of installation - up to 1000m, IEC 60120

The RMU shall be tested for an internal arc rating of 20 kA for 1 Sec. for 11 KV RMU. Suitable temperature rise test on the RMU shall be carried out & test reports shall be submitted.

Each switchboard shall be identified by an appropriately sized label, which clearly indicates the functional units and their electrical characteristics.

The switchgear and switchboard shall be designed so that the position of the different devices is visible to the operator on the front of the switchboard and operations are visible as well.

The entire system shall be totally encapsulated. There shall be no access to exposed conductors. In accordance with the standards in effect, the switchboards shall be designed so as to prevent access to all live parts during operation without the use of tools.

The entire 11 KV RMU are insulated by inert gas (SF6) suitable for operating voltage up to 12 KV respectively. The 11 KV circuit breakers must be VCB breaker. It is necessary to fit an absorption material in the tank to absorb the moisture from the SF6 gas. The SF6 insulating medium shall be constantly monitored via a temperature compensating gas pressure indicator offering a indication at different temperature ranges, having distinctive RED and GREEN zones for safe operation.

All the RMUs must be routine tested for the following at factory in India:-

- ❖ Micro-ohm test (Contact Resistance test) for the assembly inside the tank.
- ❖ Circuit breaker analyzer test so as to ensure the simultaneous closing of all poles for VCB.
- ❖ SF6 gas leak test.

- ❖ Partial Discharge test on the complete gas tank so as to be assure of the proper insulation level and high product life.
- ❖ High voltages withstand.
- ❖ Secondary test to ensure the proper functioning of the live line indicators, fault passage indicators and relays.
- ❖ As per IEC/IS standards Mechanical operation of RMU / Breaker Must be carried out.

**SULPHUR HEX FLUORIDE GAS (SF6 GAS):**

The SF6 gas shall comply with IEC 376,376A, and 376B and shall be suitable in all respects for use in 11 KV RMUs under the operating conditions. The SF6 shall be tested for purity, dew point air hydrolysable fluorides and water content as per IEC 376,376A and 376B and test certificate shall be furnished to the owner indicating all the tests as per IEC 376 for each Lot of SF6 Gas.

**DIELECTRIC MEDIUM**

SF6 gas shall be used for the dielectric medium for 11KV RMUS in accordance with IEC376. It is preferable to fit an absorption material in the tank to absorb the moisture from the SF6 gas and to regenerate the SF6 gas following arc interruption. The SF6 gas insulating medium shall be constantly monitored via a temperature compensating gas pressure indicator offering a simple go, no-go indication.

**GENERAL STRUCTURAL AND MECHANICAL CONSTRUCTION:**

The offered RMU should be of the fully arc proof metal enclosed, free standing, floor mounting, flush fronted type, consisting of modules assembled into one or more units. Each unit is made of a cubicle sealed-for life with draw out type VCB and contains all high voltage components sealed off from the environment.

The overall design of the indoor switchgear should be such that front access only is required. It should be possible to erect the switchboard against a substation wall, with cables being terminated and accessible from the front.

The units should be constructed from Minimum 2 mm thick stainless steel sheets. However, Offer with type test report of pressure withstand test for gas filled compartment with pressure relief device test as per cl. no. 6-103-1 of IEC 62271- 200-2003 can be accepted for 2mm stainless steel tank thickness. The design of the units should be such that no permanent or harmful distortion occurs either when being lifted by eyebolts or when moved into position by rollers.

Outdoor RMUs a weather proofing process shall be carried out. SHEET METAL MUST BE GRIT BLASED / THERMALLY SPRAYED AND POLYURETHANE PAINTED WITH ABOUT 80 MICRON THICKNESSES, TO ACHIVE OUTDOOR WORTHINESS AND CORROSION PROOF NESS.

RMU ENCLOSURE MUST BE SHIELDED AGAINST SOLAR IRRADIATION AND TESTED FOR AN AMBIENT OF 50 DEGREE C WITHOUT DERATING OF THE EQUIPMENT.

The cubicle shall have a pressure relief device. In the rare case of an internal arc, the high pressure caused by the arc will release it, and the hot gases is allowed to be exhausted out at the bottom / top / rear of the cubicle. A controlled direction of flow of the hot gas should be achieved.

The switchgear should have the minimum degree of protection (in accordance with IEC 60529)

- IP 67 for the tank with high voltage components
- IP 2X for the front covers of the mechanism
- IP 3X for the cable connection covers
- IP 54 for the outdoor enclosure.

STANDARDS:

Unless otherwise specified elsewhere in this Specification, the RMU, Switchboard (Switchgear), Load break isolators, Instrument Transformers and other associated accessories shall conform to the latest revisions and amendments thereof to the following standards.

1. IEC 60 298/IEC 62 271-200/IS 12729:1988 - General requirement for Metal Enclosed Switchgear
2. IEC60129/IEC62271-103/IEC62271-102/IS9921-Alternating current disconnectors(Load break isolators) and earthing switch
3. IEC 62 271-100 & 200/IEC 60 056/IS 13118:1991 - Specification for alternating current circuit breaker
4. IEC 62 271-1/IEC 60694 - Panel design, SF6/Vacuum Circuit Breakers
5. IEC 60044-1/IEC 60185/IS 2705:1992 - Current Transformer
6. IEC 60265-1/IS 9920:1988- High voltage switches.
7. IEC 376 - Filling of SF6 gas in RMU.
8. IEC 60273/IS: 2099 - Dimension of Indoor & Outdoor post insulators i. with voltage > 1000 Volts.
9. IEC 60529/IS 13947(Part-1) - Degree of protection provided by
  - i. enclosures for low voltage switchgear and
  - ii. Control gear.
10. Indian Safety Regulations 2010/Relevant IS

Equipment meeting with the requirements of any other authoritative standards, which ensures equal or better quality than the standard mentioned above as well as latest standard shall also be acceptable. If the equipments, offered by the Bidder conform to other standards, salient points of difference between the standards adopted and the specific standards shall be clearly brought out in relevant schedule. In case of any difference between provisions of these standards and provisions of this specification, the provisions contained in this specification shall prevail. One copy of such standards with authentic English Translations shall be furnished along with the offer.(Hard copy)

**APPLICABLE STANDARDS**

- The RMUs shall be manufactured to the highest quality consistent with best practice and workmanship and in full accord with the Supplier's quality assurance plan. The RMUs shall conform to the Indian or IEC international standards that are applicable. These include the standards listed in Table 1 below.

Table 1: Applicable Standards

Standard	Description
IS 3427	AC metal enclosed switchgear and control gear for rated voltages above 1 kV and up to and including 52 kV
IS 12063	Classification of degrees of protection provided by enclosures of electrical equipment
IS 9920 (Parts 1 to 4)	High Voltage Switches
IS 9921 (Parts 1 to 5)	Specification for AC disconnectors and earthing switches for voltages above 1000 V
IS 13118	HV AC Circuit Breakers
IS 10601	Dimensions of terminals of HV Switchgear and Control gear
IS 12729	General requirements of switchgear and control gear for voltages exceeding 1000 V
IEC 1330	High voltage/Low voltage prefabricated substations
IEC 60694	Common clauses for MV switchgear standards
IEC 6081	Monitoring and control
IS 2705	Current Transformers
IS 3156	Voltage transformers
IS 8686	Specification for Static Protective Relays
IEC 62271-200	Standards for high voltage metal clad switchgear up to 52 KV.
INDIAN ELECTRICIATY REGULATION 2010	This is to be as per Central Electricity Authority (Safety Requirement for Construction, Operation & Maintenance of Electrical Plants and Electric Lines) Regulations, 2010

**THE STANDARDS MENTIONED ABOVE ARE AVAILABLE FROM:**

**IEC** - (INTERNATIONAL ELECTRO-TECHNICAL COMMISSION, BUREAU CENTRAL DE LA COMMISSION, ELECTRO TECHNIQUE INTERNATIONALE, 1, RUE DE VEREMBE, GENEVA, SWITZERLAND.)

**ISO** - INTERNATIONAL STANDARD ORGANISATION

SPECIFIC REQUIREMENTS IN RMU:-  
CLIMATE CONDITIONS

The climatic conditions under which the equipment should operate satisfactory are as under:

- Maximum ambient air temperature :50 deg. C
- Minimum ambient air temperature :10 deg. C
- Maximum daily average ambient air temperature :45 deg C

➤ Maximum humidity	:100%
➤ Altitude above M.S.L. (maximum)	:1000 meters
➤ Average annual rainfall(mm) max	925
➤ Max. wind pressure(Kg/sq.m)	200
➤ Seismic level(Horizontal accn.)	:0.3 g
➤ Iso-ceraunic level(Days per Year)	50
➤ Average thunder storm days per annum	50

#### Distribution Network Electrical Parameters

The main parameters of the distribution network are as follows:

- Rated Voltage	:12 KV
- Nominal system voltage:	:11 kV (rms)
- Highest system voltage:	:12 kV (rms)
- Number of phases:	3
- Frequency:	:50 Hz
- Variation in frequency:	: 48.5 Hz to 51.5 Hz
- Type of earthing:	:Solid
- Power frequency withstand voltage:	:28 kV
- Basic impulse withstand voltage:	:95kV

#### RMU OUTDOOR METAL CLAD ENCLOSURE.

The RMU enclosure must be a metallic; it shall follow an industrialized process of manufacturing. The RMU and combination shall be tropicalised and outdoor metal enclosed type. The RMU metal parts shall be of high thickness, high tensile steel which must be grit/short blasted, thermally sprayed with Zinc alloy, phosphate or should follow the 7 tank pre-treatment process and be subsequently painted with polyurethane based powder paint. The overall paint layer thickness shall be not less than 80 microns.

The rating of enclosure shall be suitable for operation on three phases, three wires, 11 KV, 50 cycles, A.C. System with short-time current rating of 20KA for 3 seconds for 11 KV with RMU Panels.

The enclosure should have two access doors one for the operation and relay monitoring and other for the cable access. Both the doors should have the locking facility to prevent the access to operating mechanism to avoid unauthorized operating of RMU and relay.

#### RMU Design Features

All design features of the proposed RMU, as described in the supplier's bid and in the bid's reference materials, shall be fully supported by the equipment actually delivered. The key design features include those that relate to:

- Maintainability and lifespan
- Ability to operate in severe outdoor environmental conditions.
- Immunity to electrical stress and disturbance.
- Acceptable insulation properties.

#### OUT DOOR RMU

1. Stainless steel enclosure for OUT DOOR RMU application. The manufacturers shall conform the normal current ratings mentioned in GTP at 50 deg. Ambient without derating or as per IEC Standard
2. Enclosure with I.P.54 standard protection.
3. Cable boxes shall be on Front sides.
4. RMU ENCLOSURE MUST BE SHIELDED AGAINST SOLAR IRRADIATION AND TESTED FOR AMBIENT OF 50 DEGREE C. The manufacturers shall conform the normal current ratings mentioned in GTP at 50 deg. Ambient without derating, however, design for higher ambient temperature than 50 degree may be admissible.

#### ISOLATORS (LOAD BREAK TYPE)

The load break isolators for Incoming and Outgoing supply must be provided. These should be fully insulated by SF6 gas. The load break isolators shall consist of 630 Amp fault making/load breaking spring assisted ring switches, each with integral fault making earth switches. The switch shall be naturally interlocked to prevent the main and earth switch being switched "ON" at the same time. The selection of the main and earth switch is made by a lever on the facia, which is allowed to move only if the main or earth switch is in the off position. The load break isolators should have the facility for remote operation. Each load break switch shall be of the triple pole, simultaneously operated, automatic type with quick break contacts and with integral earthing arrangement.

The isolating distance between the OFF and the ON position in the isolator should be sufficient to withstand dielectric test as per IS/IEC, so as to have enough isolating distance for ensuring safety during DC injection for Cable testing.

#### Load break switch should have the following

- ❖ Motor operated 12 KV, 630A Load Break switch and manually operated Earthing Switch with making capacity.
  - ❖ "Live Cable" LED Indicators thru Capacitor Voltage Dividers mounted on the bushings.
  - ❖ Mechanical ON/OFF/EARTH Indication and interlocking between earth and on/off conditions.
  - ❖ Anti-reflex operating handle
  - ❖ Cable Testing facility without disconnecting the cable terminations, cable joints and terminal protectors on the bushings.
- Cable terminations
- ❖ Cable boxes suitable for 1 X 3C x 300 sq mm XLPE Cable with right angle Cable Termination Protectors.

**EARTHING OF ISOLATORS AND BREAKERS (EARTH SWITCH):** Necessary arrangements are provided at Load break isolators Breaker for selecting Earth position. Mechanical interlocking systems shall prevent the RMU function from being operated from the "ON" to "Earth On" position without going through the "OFF" position.

**TRANSFORMER/FEEDER CIRCUIT BREAKER(VACUUM):** The VCB breaker for the controlling of TRANSFORMER /Feeder Breaker must be provided inside welded stainless steel SF6 gas tank with the outdoor metal clad enclosure. The VCB circuit breaker must be a spring assisted three positions with integral fault making earth switch. The selection of the main/earth switch lever on the facia, which is allowed to move only if the main or earth switches is in the off position.

The manual operation of the circuit breaker shall not have an effect on the trip spring. This should only be discharged under a fault (electrical) trip; the following manual reset operation should recharge the trip spring and reset the circuit breaker mechanism in the main off position.

The circuit breaker shall be fitted with a mechanical flag, which shall operate in the event of a fault (electrical) trip occurring. The "tripped" flag should be an unambiguous colour differing from any other flag or mimic.

Both the circuit breaker and ring switches are operated by the same unidirectional handle.

The protection on the circuit breaker shall comprise of the following components:-

- 5P10 class protection CTs,
- low burden trip coil and
- O/C, Differential & E/F relay with auxiliary supply (24V DC) shall be provided

IDMT protection relays (Numeric/Micro processor based) 3 x over current and earth fault element shall be Definite Time type relay. The relay should be housed within a pilot cable box accessible.

THE NOMINAL CURRENT RATING OF PROTECTION CLASS CT SHALL BE 50-150/5 Amp. AND ACCORDINGLY SUITABLE NEUMERICAL RELAY SHALL HAVE TO BE PROVIDED. THE MINIMUM RELAY CURRENT SETTING RANGE FOR O/C: 0% TO 150% AND E/F: SHOULD BE FROM 0% TO 100%.

Circuit Breaker should have the following Specification:

- Motor operated 630amp Vacuum circuit breaker (draw out type) and Earthing Switch with making capacity 51KA
- Mechanical tripped on fault indicator
- Auxiliary contacts 4NO and 4NC
- Anti-reflex operating handle
- "Live Cable" LED Indicators through Capacitor Voltage Dividers mounted on the bushings.
- O/C + E/F+ Differential relay with auxiliary supply (24V DC) shall be provided.
- Shunt Trip circuit for external trip signal
- Mechanical ON/OFF/EARTH Indication
- Cable boxes suitable for 1 X 3C x 300 sq mm XLPE Cable with right angle Cable Termination Protectors / boots

## TECHNICAL DATA

### 1) Ring Main Unit, Electrical Data: Electrical Data and Service Conditions

	Rated voltage	KV	12
1	Power frequency withstand voltage	KV	28
2	Impulse withstand voltage	KVp	95
3	Rated frequency	Hz	50
4	Rated current bus bars	A	630
5	Rated current (cable switch)	A	630
6	Rated current (T-off)	A	630
Breaking capacities:			
7	active load Max	A	630
8	closed loop (cable switch)	A	630
9	off load cable charging (cable switch)	A	135
10	earth fault (cable switch)	A	200
11	earth fault cable charging (cable switch)		115
12	short circuit breaking current (T-off circuit breaker)	kA	20 / 21
13	Rated making capacity	kA	52
14	Rated short time current 3 sec.	kA	20 / 21

Ambient temperature:			
15	Maximum value	°C	+ 50
16	Maximum value of 24 hour mean	°C	+ 40
17	Minimum value	°C	0
18	Altitude for erection above sea level <sup>4</sup>	m	1000
19	Relative humidity		Max 95%

2) Ring Main Unit Technical data (11KV):

No.	General data, enclosure and Dimensions	
1	Standard to which Switchgear Complies	IEC
2	Type of Ring Main Unit	Metal Enclosed, Panel type, Compact Module.
3	Number of phases	3
4	Whether RMU is type tested	Yes
5	Whether facility is provided with pressure relief	Yes
6	Insulating gas	SF6
7	Nominal operating gas pressure	1.4 bar @ 20° C. However offer with Nominal operating gas pressure shall be as per manufacturer standard and suitable to satisfy the rated dielectric strength can be Accepted
8	Gas leakage rate / annum	0.075%
9	Expected operating lifetime	30 years
10	Whether facilities are provided for gas monitoring	Yes, temperature compensated manometer can be delivered
11	Material used in tank construction	Stainless steel sheet, minimum 2 Mm

No.	Operations, degree of protection and colours	
1	Means of switch operation	separate handle
2	Means circuit breaker operation	separate handle and push buttons
3	Rated operating sequence of Circuit Breaker	0 - 3min-CO-3min-CO
4	Total opening time of Circuit Breaker	approx. 45ms
5	Closing time of Circuit Breaker	approx. 40ms
6	Mechanical operations of switch (co)	1000
7	Mechanical operations of CO earthing switch	1000
8	Mechanical operations of circuit breaker (co)	2000
9	Principle switch / earth switch	3 position combined switch / earth switch
	Degree of protection:	

10	High Voltage live parts, SF6 / VCB Tank	IP 67
11	Front cover mechanism	IP 2X
12	Cable covers	IP 3X
13	Outdoor Enclosure	IP 54
	Colours:	
14	Front cover	Smoke Gray
15	Side and cable cover	Smoke Gray

## **BUSHINGS**

The units are fitted with the standardized bushings that comply with IEC standards. All the bushings are the same height from the ground and are protected by a cable cover.

## **CABLE BOXES**

All the cable boxes shall be air insulated suitable for dry type cable terminations and should have front access. The cable boxes at each of the two ring switches should be suitable for accepting HV cables of sizes 3c x 300 sq.mm and circuit breaker cable suitable up to 3c x 300 sq.mm. The cable boxes for an isolator in its standard design should have sufficient space for connecting two cables per phase

Necessary Right angle Boot should be supplied to the cable terminations .The type of the Right angle Boot should be cold applied insulating Boot. In cable box bushing fitting required 3 KN capacities.

## **CABLE TESTING FACILITY**

It shall be possible to test the cable after opening the cable boxes. The cable boxes should open only after operation of the earth switch. Thus ensuring the earthing of the cables prior to performing the cable testing with DC injection.

## **VOLTAGE INDICATOR LAMPS AND PHASE COMPARATORS**

The RMU shall be equipped with a phase wise voltage indication to indicate whether or not there is voltage on the each phase of cable. There should be a facility to check the synchronization of phases with the use of external device. It shall be possible for the each of the function of the RMU to be equipped with a permanent voltage indication as per IEC 601958 to indicate whether or not there is voltage on the each phase cables. Indicator should be visible from outside without opening door.

## **WIRING & TERMINALS**

The wiring should be of high standard and should be able to withstand the tropical weather conditions. All the wiring and terminals (including take off terminals for future automation, DC, Control wiring), 20% Spare terminals shall be provided by the Successful Bidder. The wiring cable must be standard single-core non-sheathed, Core marking (ferrules), stripped with non-notching tools and fitted with end sleeves, marked in accordance with the circuit diagram with printed adhesive marking strips.

The wiring should be of high standard and should be able to withstand the tropical weather conditions. All wiring shall be provided with single core multi-strand flexible copper conductor wires with P.V.C insulation.

The wiring shall be carried out using multi-strand copper conductor super flexible PVC insulated wires of 1100V Grade for AC Power, DC Control and CT circuits. Suitable colored wires shall be used for phase identification and interlocking type ferrules shall be provided at both ends of the

wires for wire identification. Terminal should be suitably protected to eliminate sulphating. Connections and terminal should be able to withstand vibrations. The terminal blocks should be stud type for controls and disconnecting link type terminals for CT leads with suitable spring washer and lock nuts.

Flexible wires shall be used for wiring of devices on moving parts such as swinging Panels (Switch Gear) or panel doors. Panel wiring shall be securely supported, neatly arranged readily accessible and connected to equipment terminals, terminal blocks and wiring gutters. The cables shall be uniformly bunched and tied by means of PVC belts and carried in a PVC carrying trough.

The position of PVC carrying trough and wires should not give any hindrance for fixing or removing relay casing, switches etc., Wire termination shall be made with solder less crimping type of tinned copper lugs. Core identification plastic ferrules marked to correspond with panel wiring diagram shall be fitted with both ends of each wire. Ferrules shall fit tightly on the wire when disconnected. The wire number shown on the wiring shall be in accordance with the IS.375.

All wires directly connected to trip circuits of breaker or devices shall be distinguished by addition of a red color unlettered ferrule.

Inter-connections to adjacent Panels (Switch Gear) shall be brought out to a separate set of Terminal blocks located near the slots or holes to be provided at the top portion of the panel. Arrangements shall be made for easy connections to adjacent Panels (Switch Gear) at site and wires for this purpose shall be provided and bunched inside the panel. The bus wire shall run at the top of the panel.

Terminal block with isolating links should be provided for bus wire. At least 20% of total terminals shall be provided as spare for further connections. Wiring shall be done for all the contacts available in the relay and other equipment and brought out to the terminal blocks for spare contacts. Color code for wiring is preferable in the following colours.

- Voltage circuits : Red, Yellow, Blue for phase and Black for Neutral
- CT circuits : similar to the above
- DC circuits : Grey for both positive and negative
- 250V AC circuits : Black for both phase and neutral
- Earthing : Green

The wiring shall be in accordance to the wiring diagram for proper functioning of the connected equipment. Terminal blocks shall not be less than 1100V grade and shall be piece-molded type with insulation barriers.

The terminal shall hold the wires in the tight position by bolts and nuts with lock washers. The terminal blocks shall be arranged in vertical formation at an inclined angle with sufficient space between terminal blocks for easy wiring.

The terminals are to be marked with the terminal number in accordance with the circuit diagram and terminal diagram. The terminals should not have any function designation and are of the tension spring and plug-in type.

## **EARTHING**

The RMU outdoor metal clad, Switch Gear, Load break isolators, Vacuum circuit breakers shall be equipped with an earth bus securely fixed along the base of the RMU.

The size of the earth bus shall be made of IEC/IS standards with tinned copper flat for RMU and M.S. Flat for Distribution Transformer, earth spike and neutral earthing. Necessary terminal clamps and connectors shall be included in the scope of supply.

All metal parts of the switchgear which do not belong to main circuit and which can collect electric charges causing dangerous effect shall be connected to the earthing conductor made of

copper having CS area of minimum 75 sq.mm. Each end of conductor shall be terminated by M 10/equivalent quality and type of terminal for connection to earth system installation. Earth conductor location shall not obstruct access to cable terminations.

The following items are to be connected to the main earth conductor by rigid or copper conductors having a minimum cross section of 75 mm (a) earthing switches (b) Cable sheath or screen (c) capacitors used in voltage control devices, if any.

The metallic cases of the relays, instruments and other panel mounted Equipments shall be connected to the earth bus by independent copper wires of size shall be made of IEC/IS standards. The colour code of earthing wire shall be green. Earthing wires shall be connected on the terminals with suitable clamp connectors and soldering shall not be permitted.

Two no. of earthing with connecting G.I Strip (size=35mm\*3mm) are to be provided as per the Earthing Pit specification.

#### **ACCESSORIES & SPARES**

The following spares and accessories shall be supplied along with the main equipments at free of costs. This shall not be included in the price schedule.

Charging lever for operating load break isolators & circuit breaker of each RMU.

The pressure gauges indications - 1 numbers

Provision shall be made for padlocking the load break switches/ Circuit breaker, and the earthing switches in either open or closed position with lock & master key.

#### **TESTING OF EQUIPMENT & ACCESSORIES**

Provision for testing CTs, PTs, Relays, Breakers and Cables shall be made available. Procedure and schedule for Periodical & Annual testings of equipments, relays, etc. shall be provided by the supplier.

#### **TYPE TEST**

The Bidders should, along with the tender documents, submit copies of all Type test certificate of their make including breaker and Isolators in full shape as confirming to relevant ISS/IEC of latest issue obtained from a International/National Govt. Lab/Recognized laboratory.

The above type test certificates should accompany the drawings for the materials duly signed by the institution who has type test certificate.

#### **ACCEPTANCE AND ROUTINE TESTS**

All acceptance and routine tests as stipulated in the latest IEC- shall be carried out by the supplier in the presence of GMDC's representative. The supplier shall give at least 07 days advance intimation to the GMDC to enable them to depute their representative for witnessing the tests. The partial discharge shall be carried out as routine test on each and every completely assembled RMU gas tank and not on a sample basis. As this test checks and guarantees for the high insulation level and thus the complete life of switchgear.

#### **ADDITIONAL TESTS**

GMDC reserves the right for carrying out any other tests of a reasonable nature at the works of the supplier/laboratory or at any other recognized laboratory/research institute in addition to the above mentioned type, acceptance and routine tests at the cost of the Board to satisfy that the material complies with the intent of this specification.

#### **PRE-COMMISSIONING TESTS**

All the pre-commissioning tests will be carried out in the presence of the GMDC testing engineer and necessary drawing manual and periodical test tools shall be arranged to be supplied.

During the above tests the Successful Bidder representative should be present till the RMUs are put in to service.

## **INSPECTION**

The inspection may be carried out by the GMDC at any stage of manufacture. The supplier shall grant free access to GMDC's representative at a reasonable time when the work is in progress. Inspection and acceptance of any equipment under this specification by the GMDC shall not relieve the supplier of his obligation of furnishing equipment in accordance with the specification and shall not prevent subsequent rejection if the equipment is found to be defective.

The supplier shall keep the GMDC informed in advance, about the manufacturing programme so that arrangement can be made for inspection. The GMDC reserves the right to insist for witnessing the acceptance/routine testing of the bought out items. The GMDC has rights to inspect the supplier's premises for each and every consignment for type & routine test.

No material shall be dispatched from its point of manufacture unless the material has been satisfactorily inspected and tested / unless the same is waived by the GMDC in writing.

## **QUALITY ASSURANCE PLAN**

The bidder shall invariably furnish following information along with his offer / in case of event of order.

Statement giving list of important raw materials including but not limited to

Contact material

Insulation

Sealing material

Contactors, limit switches, etc. in control cabinet.

Name of sub-suppliers for the raw materials, list of standards according to which the raw materials are tested, list of test normally carried out on raw materials in presence of Bidder's representative, copies of test certificates.

Information and copies of test certificates as in (l) above in respect of bought out accessories & raw materials.

List of areas in manufacturing process, where stage inspections are to be carried out.

Normally carried out for quality control and details of such tests and inspections.

Special features provided in the equipment to make it maintenance free.

List of testing equipment available with the Bidder for final testing of RMUs and associated combinations vis-à-vis the type, special, acceptance and routine tests specified in the relevant standards. These limitations shall be very clearly brought out in the relevant schedule i.e. schedule of deviations from specified test requirements. The supplier shall, within 15 days from the date of receipt of Purchase Order submit following information to the GMDC.

List of raw materials as well bought out accessories and the names of sub-suppliers selected from those furnished along with offer.

Necessary test certificates of the raw material and bought out accessories.

Quality Assurance Plan (QAP) with hold points for GMDC's inspection. The quality assurance plan and hold points shall be discussed between the GMDC and supplier before the QAP is finalized.

The supplier shall submit the routine test certificates of bought out items and raw material, at the time of routine testing of the fully assembled breaker.

## **TRAINING**

The supplier shall give rigorous training to the engineers & staff for 2 days in attending trouble shooting and maintenance.

## **DOCUMENTATION AND DRAWINGS**

All drawings shall conform to relevant International Standards Organization (ISO) Specification. All drawings shall be in ink and suitable for microfilming.

The Bidder shall submit along with his bid, dimensional general arrangement drawings of the equipments, illustrative and descriptive literature in triplicate for various items in the RMUs which are all essentially required for future automation.

- I. Schematic diagram of the RMU panel
- II. Instruction manuals
- III. Catalogues of spares recommended with drawing to indicate each items of spares
- IV. List of spares and special tools recommended by the supplier.
- V. Copies of Type Test Certificates as per latest IS/IEC.
- VI. Drawings of equipments, relays, control wiring circuit, etc.
- VII. Foundation drawings of RMU so that Utility will planned and carry out civil works etc.
- VIII. Dimensional drawings of each material used for item VII.
- IX. Actual single line diagram of RMU/RMUs with or without Extra combinations shall be made displayed on the front portion of the RMU so as to carry out the operations easily.

The following should be supplied to each consignee circle/town along with the initial supply of the equipments ordered.

- a. Copies of printed and bound volumes of operation, maintenance and erection manuals in English along with the copies of approved drawings and type test reports etc.
- b. Sets of the manuals as above shall be supplied to the GMDC. A soft copy of the all Technical and Drawing furnished in a CD.

#### **NAME PLATE**

Each RMU and its associated equipments shall be provided with a nameplate legible and indelibly marked with at least the following information.

- a. Name of manufacturer
- b. Type, design and serial number
- c. Rated voltage and current
- d. Rated frequency
- e. Rated symmetrical breaking capacity
- f. Rated making capacity
- g. Rated short time current and its duration
- h. Purchase Order number and date
- i. Month and Year of supply
- j. Last date of completion of Guarantee period
- k. Rated lightning impulse withstand voltage
- l. Feeder name (Incoming and Outgoing), TRANSFORMERs Structure name, 11000 Volts Dangers etc.
- j Name of Customer: GMDC, Panandhro Project

#### **NOTE:**

- THE WORD RATED NEED NOT APPEAR ON THE NAME PLATE. RECOGNIZED ABBREVIATIONS MAY BE USED TO EXPRESS THE ABOVE PARTICULARS.

- WHETHER THE CIRCUIT BREAKER IS FITTED WITH CLOSING/TRIPPING DEVICES NECESSITATING AN AUXILIARY SUPPLY SHALL BE STATED EITHER ON THE CIRCUIT BREAKER NAME PLATE OR ANY OTHER ACCEPTABLE POSITION.

### **FAULT PASSAGE INDICATORS (FPI)**

These shall facilitate quick detection of faulty section of line. The fault indication may be on the basis of monitoring fault current flow through the device. The unit should be self-contained requiring no additional auxiliary power supply. The FPI shall be integral part of RMU. The FPI shall have LCD/LED display, automatic reset facility.

The sensors to be bushing/cable mounted. The number of FPI should be put in all the three phases of the outgoing branch of the RMUs

FPI has to give indication on over current, short circuit and earth fault.

FPI Indication should be visible from outside without opening of door.

The FPI inside the RMU may be non communicable and hard wired to the TB for the signals

Fault Passage indicator OK

### **TROPICALISATION**

Due regard should be given to the climatic conditions under which the equipment is to work. Ambient temperatures normally vary between 20 deg C and 40 deg C, although direct sun temperature may reach 45 deg C. The climate is humid and rapid variations occur, relative humidity between 60% and 95% being frequently recorded, but these values generally correspond to the lower ambient temperatures. The equipment should also be designed to prevent ingress of vermin, accidental contact with live parts and to minimize the ingress of dust and dirt. The use of materials which may be liable to attack by termites and other insects should be avoided.

### **TECHNICAL SPECIFICATION FOR RMU 11 KV BUS BAR**

- |   |                     |
|---|---------------------|
| I. Current Carrying Capacity              | : 630 Amps.         |
| II. Short time rating current for 3 secs. | : 20 KA for 11kv    |
| III. Insulation of bus bar                | : SF6               |
| IV. Bus bar connections                   | : Anti-oxide grease |

### **PARAMETERS FOR SWITCH GEAR OF TRANSFORMER AND LOAD BREAK ISOLATORS**

Type	Metal enclosed
No of Phases	3
No. of poles	3
Rated voltage	12 KV
Operating voltage	11 KV (+10% to -20%)
Rated lightning impulse withstand voltage	95 KV
Rated power frequency withstand voltage	28 KV
Insulating gas	SF6
Rated filling level for insulation	As Per IEC.
Max. permissible site altitude at the above gas pressures	1000m (The operating pressure has to be adjusted for greater altitudes)

Isolating distance between ON and OFF position in isolator	80 mm (min)
Rated short time current	20 KA. for 11kv
Rated short time	3s
Rated peak withstand current	50 KA
No of operations in Short circuit	15Nos (minimum)

Operating mechanism: Circuit breaker with spring assisted anti reflex mechanism.  
Rated current (Bus):630 A

Rated current (breaker) :630 A  
Circuit Breaker interrupter : VCB  
Rated frequency : 50 Hz  
Rated operating sequence : O-3min- CO

Number of mechanical/Remote operations for earthing : As per IEC & Ring switches & Number of mechanical/ Remote operations for circuit breakers 60298

#### PRINCIPAL FEATURES

Sr. No	DESCRIPTION	Breaker
1	Circuit label	Yes
2	Mimic diagram	Yes
3	Supply voltage indication	Yes
4	Current Transformer	Yes
5	IDMT O/C & E/F Numerical/Microprocessor relay with auxiliary supply (24V DC) shall be provided.	Yes
6	Anti - Reflexing Handle	Yes
7	Interlock to defeat the operation of the line side earthing when the line side isolator is ON.	Yes
8	Interlock to defeat the operation of the earthing when the breaker is in service position and is ON.	Yes
9	Breaker ON/OFF indication	Yes
10	Spring Charge indication / Spring assisted mechanism.	Yes
11	Fault Tripping indication	Yes
12	Bus bar end caps	Yes
13	Whether the SF6 gas pressure gauge indicator and filling arrangement.	Yes
14	Whether the spring assisted mechanism with operating handle for ON/OFF.	Yes
15	Whether the earth positions with arrangement for padlocking in each position and independent manual operation with mechanically operated indicator are provided	Yes

## EARTHING SWITCH FOR 11 KV LINE ISOLATION

Rated short time current	20 KA.for 11kv
Rated short time	3s
Rated peak withstand current Interlocking Facility	50 KA

- 1) Between 11 KV Line side isolator "ON"&Earthing.
- 2) Between 11 KV TRANSFORMER side breaker on close condition &earthing

## CURRENT TRANSFORMERS FOR BREAKER

CT Type: Tape wound

CT Description: THE NOMINAL CURRENT RATING OF PROTECTION CLASS CT SHALL BE 50-150/5 Amp. AND ACCORDINGLY SUITABLE NEUMERICAL RELAY SHALL HAVE TO BE PROVIDED. THE MINIMUM RELAY CURRENT SETTING RANGE FOR O/C: 0% TO 150% AND E/F: SHOULD BE FROM 0% TO 100%.

Accuracy Class CT : 0.5/5P10                      Rated burden : 15 VA.

RMU Make-Siemens/ ABB/Schneider/ C&S/L&T make RMU with 11KV VCB breakers with panels. RMU panels should be with lifting hook, shifting arrangement, locking arrangement to doors; SS handle for opening/closing of door, 11KV VCB panel door can be easily open, draw out type VCB. Lightning arrester - copper rod to be fixed on top of the RMU for lightning protection & same shall be connected with earthing electrodes.

## CHEMICAL EARTHING WITH CHAMBER (1ftx1ftx1ft)

As per IS 3043 technical Specification-hot dipped GI Flat (size-70 square mm, 9 Feet long) inserted in to ISI GI pipe(78mm, 9 feet long) filled with special compound Cross sectional primary conducting area in 300sq.mm.The concrete chamber shall be of 1x1x1 Feet dimension.

## 25 KVA LIGHTING TRANSFORMERS (OUTDOOR)

KVA-25KVA

Primary Volts -440Volts, 3phase ac, 50 Hz

Secondary volts -250V AC (phase to phase voltage)

Primary (HV) side connection- 3phase delta

Secondary (LV) side connection -3 Phase + Grounded Neutral (Star connection)

Frequency- 50 Hz

Double wound copper winding

Cooling-AN

Insulation class-H

## OTHER DETAILS

Any popular brand makes 100AMP, MCCB 3 pole should be provided at primary side inside enclosure at primary side one side.

Any popular brand makes 125AMP, MCCB 3 pole should be provided at secondary side inside enclosure at secondary side (opposite side)

Secondary side - neutral point of star connection should be fixed near to secondary side MCCB separately for neutral grounding (to be fixed on epoxy insulator)

Lighting transformer winding should be fixed in enclosure in MS sheet & should be proper spacious, ventilated, door should be provided so that can be open both side to check winding & for providing of connections. (Primary-Secondary)

Lighting Transformer should be provided with anti-corrosive paint & two layer of grey colour in side & outside of enclosure of lighting transformer provided suitable capacity of hooks on top for lifting of Lighting Transformer provided MS wheel for shifting of Lighting Transformer Lighting Transformer should be proper ventilated provided earthing point at bottom of Lighting Transformer-minimum two earthing point & can be nut - bolted & same to be earthed with earthing pit electrode.

Drawing & specification should be approved before manufacturing or sending of the Lighting Transformer.

### **11 KV DP Structure (Air Break Switch and LA)**

DP Structure (PSC poles-200Kg x 8mtrs long) for 200A Air break switch structure & with operating rod , handle mounting accessories etc. & lightning arresters. Including suitable earth pit and earthing. There shall be limit switch for on and off feedback of the DP switch. This Not-ON DP switch feedback shall be used as interlock for down comer VCB tripping. All the scheme shall be in bidder scope.

### **11KV OH Line with DP structures, PSC poles**

50sq.mm Rabbit ACSR bare conductor to be used for 11 KV OH line work with 200Kg x 8mtrs PSC poles for DP structure & 1pole , angles, channels, silicon pin type and disc type insulators, V cross arms, nut/bolts, guy sets, coil earthing, Channels etc shall be used.

There shall be two of main Road crossing. For main road crossing Underground power cable shall be used. For Other road crossing OH shall be provided with cradle guarding which shall be earthed appropriately.

Every PSC poles, DP structures shall be locally earthed by coil earthing of 8 gauge GI wires.

The maximum line span between two poles shall be maintained 25 metres except river crossing.

Two pole structures shall be erected after every 8 single poles for strengthening lines.

All the erected 11 KV poles and DP structures shall be protected by thorough connected single run stranded Aluminum conductor as earth wire throughout the line length. (This aluminum conductor shall be provided by GMDC free of cost on as and where basis. The bidder shall shift from old location and use it as earth wire)

Termination at 11KV breaker and DP structures by suitable cables and termination kit shall be in the bidder's scope of following specification.

### **SPECIFICATION OF 11KV XLPE CABLE TO BE USED**

3 x 50 Sq. mm 11KV Allu. Armoured XLPE Cable IS brand any reputed make

### **SPECIFICATION OF 50 SQ.MM 11KV END TERMINATIONS KIT (REYCHEM MAKE ONLY)**

11KV end termination, 3X50 Sq mm heat shrinkable kit make-Reychem or any reputed make

### **OTHER DETAILS OF WORK TO BE CARRIED OUT**

Complete Design, Supply, Erection & Commissioning of Outdoor Ring Main Units Panels with 11KV VCB, 8 KM long 11KV OH lines, lighting transformers, chemical earthing and shifting of 1 nos. 315KVA 11/.433 KV transformer and its LT MCC etc. work at GMDC, Panandhro Mines, Dist-Kutch, State – Gujarat.

1. The Successful bidder shall visit the site with his team for survey and preparation of Project Report, Design, Lay Out, Drawing, Detailed Equipments Parameters, etc and get the project report pre approval from DGMS and Electrical Inspector and submit to GMDC.
2. After carrying out the work, the successful bidder shall get Approval / Clearance from DGMS, Electrical Inspector for charging / commissioning the system and submit to GMDC.
3. After successful commissioning, the bidder shall get final approval from DGMS, Electrical Inspector to enable GMDC for issuing work completion certificate.
4. All Expenses including stator/ License fee, etc for getting DGMS, Electrical Inspector approval/ Visits, etc shall be in the bidder's scope.
5. Complete Design, Supply, transport, installation, testing & commissioning of RMU at project site- suitable size of RMU Make-Schneider, ABB, Siemens or C&S, L&T for installation of 11KV VCB panels. 05 Nos 11KV switchgears with panels to be installed/ fixed in RMU as a 01 Nos. incoming & 04 nos. for outgoing supply (total 4Nos). All 11KV RMU switchgears to be connected internally with 11KV 3x50sq.mm Allu. Armored cables with providing of 11KV end termination kits to all incoming & out going cables, Connection to be provided with GI nut/bolts, Suitable size of gland also to be provided to in coming/outgoing cables. Rubber insulation sheets to be put before all 11KV panels on ground for safety purposes. All RMU panels connected with earthing chambers with 25mmx3mm GI strip Minimum 2Nos earthing Chambers. All connections work shall be done by agency.
6. Complete Design, Supply, transport, Installation, testing & commissioning of 05 nos. 11KV RMU with 800Amp VCB to be installed at different locations. RMUs shall be connected with suitable length of 3x50sq.mm core 11KV HT Allu. Armored XLPE cable connected to DP Air-break switches structures with end termination at both end. HT VCB panel body should be earthed at two different earth pits through 25mmx3mm thick GI strip of suitable length. 230V AC 50Hz supply to be given to HT VCB panels for spring charging motor etc. should be given with 3core 1.5 sq.mm copper cables with GI armored round wire & providing of gland of suitable size to each cable. All connections work shall be done by agency.
7. Complete Design, Supply, transport, Installation, testing & Commissioning with Making of bored for installation of chemical Earthing Rod-3mtrsx70 sq.mm Diameter & same is installed in bored. The chemical Earthing rod connected to RMU Panels, DP structures, Lightening Arrester etc. by 25mmx3mm thich GI strip with GI bolts/nuts as per instruction of GMDC Electrical Supervisor. Providing of readymade earth chamber size-1ftx1ftx 1.5ft long to every Chemical Earthing.
8. Complete Design, Supply, transport, Installation, testing & commissioning 25KVA lighting transformer 440V/230V AC , 50Hz phase to phase volts. The lighting transformers should connect with high mast towers as instruction given by GMDC Supervisor. Transformer Secondary neutral point should be earthed with earthing electrode.
9. Complete Design, Supply, transport, Installation, testing, Commissioning & erection of DP structure with 200A Air-break Switch. Digging work for installation of PSC poles(1mtr deep) & All the accessories like silicon type Disc/pin insulators, C channels, Angles, Butts/bolts, Guy sets, Coil Earthing, lightening Arresters etc. to be provided & installed.( Cement Concrete is to be provided around PSC poles 1:4:8). one coat of red oxide & 2coats of Silver paint to be applied to all MS parts .lightening arresters to be earthed separately through 8gauge GI wire without touching to any parts of DP structures.(GI wire passed through PVC pipe)
10. Complete Design, Supply, transport, Installation, testing & Commissioning 11KV OH line (8 KM long) with one 150mtr River crossing - (1)50sq.mm Rabbit ASCR bare conductor to be used for 11KV OH line. Complete laying, stringing of conductors, binding, jumpering etc. work. (2) Silicon pin type and disc type insulators are to be used on PSC poles DP structures & 1pole PSC pole- size-200Kgx8mtrs. V cross arms with c- clamps, Nuts/bolts etc. to be used while erection of OH line. (3) The span between two PSC pole/DP structure shall be not more than 25mts. (4) DP structure without LA and AB switches shall be installed at every 9Nos 1 pole PSC poles (5) Aluminum bared conductor to be laid thought OH line as a earth conductor & same shall be earthed with V cross arms(bared aluminum conductor will be given by GMDC) on every PSC poles, DP structure channels etc with LT shackle insulator & Aluminum bare conductor bind to this LT shackle insulator (Shackle LT insulator be used for earth conductor at every PSC pole & DP structure for supporting of conductor) (6) Cradle

guarding to be installed under 11KV OH line where road passing under the line(7) 11KV 3x50sq.mm Aluminum Armored cable to be underground if required & as per instruction of GMDC Electrical Supervisor.

11. River crossing: There shall be one river crossing en route. For this river crossing OH lines with cradle guard shall be used as per DGMS rules. The Cradle guard shall be earthed. Both side of River crossing OH lines shall be supported by DP structures with strong concrete foundation and guy support.
12. One nos. of 315KVA 11/.433 existing transformer along with its LT MCC shall be dismantled from the current location and shall be transported to new location at a maximum distance 4KM.
13. For Transportation all required machinery like Hydra, vehicles, etc shall be in bidder's scope.
14. A new LT MCC room of dimension 12x10 feet with bricks wall and asbestos roof shall be constructed by the bidder for re-installation of old MCC with feeders.
15. The old 315KVA transformer along with its LT MCC shall be erected and commissioned by the bidder including all types of structures including civil structures and supporting poles.
16. Suitable earthing shall be in the bidder's scope.
17. All above mentioned Electrical work will be carried out under direct GMDC Electrical Supervision & Bidder shall have to work as per his instructions.
18. All required civil structures for RMUs, Overhead lines poles, Earthing / earthing pit, etc shall be in the bidder's scope.
19. In some of 11KV lines old existing OH lines shall be used in this scheme.
20. The 11KV power cables, termination kit, etc required to connect every RMU/ Breaker to 11 KV OH lines, LT transformer, if required, shall be in bidder's scope.
21. All required Termination kits and in connecting power cables from DP structures to RMU/ Breaker shall be in bidder's scope.
22. Construction of Civil foundation and wire fencing for 11 KV RMU/ Breaker shall be in bidder scope.
23. 11KV OH line, RMU, lighting transformers, lightening arresters, DP structures, earthing etc. work will be installed as per instructions of our GMDC Electrical Supervisor.
24. Bidder shall have to take prior and post approval for above work from DGMS for commissioning of all Electrical installations.
25. Bidder shall have to submit all documents, drawing & DGMS and electrical inspector approval letter etc. (2 Copies),
26. Bidder shall have to arrange your own tools & tackles, men power and vehicle etc.
27. This work would be permitted strictly during office working hours only. In case of exigency, however, the Successful bidder will have to seek prior written permission for the purpose to work on weekly day of rest and/or paid holiday from the Mines Manager/GM (Project) and bear all relevant expenses such as overtime of required GMDC personnel and all other incidental expenses incurred by GMDC. The decision of GM (Project) will be final in this regard.
28. If any specification is different from the specification mentioned in the tender documents but the differed specification is as per ISO, Then the EIC can approve to use that specification.

### **TESTING**

Before, during and after installation of equipments, due checking and testing for performance and protection shall be performed in presence of GMDC EIC and results shall be recorded and signed by IEC, GMDC and Site Manager of the bidder. The documents shall be submitted to GMDC from time to time.

### **COMMISSIONING**

After erection of all equipments under this contract and getting due clearance of DGMS, electrical inspector, the System shall be taken in service and shall be under observation for at least 72 hours of trouble free performance for commissioning of the system.

## **PERFORMANCE GUARANTEE**

The bidder shall provide guarantee for One year (12 months) against the works done / materials supplied by the bidder for trouble free performance from the date of commissioning & completion of work. During the guarantee period, If any problem surfaces, the bidder shall carry out of repairing / replacing the material or carry out work free of cost. All types of expenses for repair, replacement, labour, insurance, octroi, statutory etc shall be in bidder's scope.

The guarantee covers all types' causes of non-satisfactory performances except natural calamities.

## **SPECIAL TERMS AND CONDITION OF THE CONTRACT WITH REFERENCE TO SCOPE OF WORK:**

- 1.** All type of Mobilization, demobilization and local conveyance for crew deployed for the work shall be in successful bidder's scope.
- 2.** All consumables required for the completion of work shall be in successful bidder's scope.
- 3.** Lighting arrangement shall be accordance with safety norm shall be in successful bidder's scope.
- 4.** Daily progress report shall be submitted.
- 5.** The successful bidder shall abide by and ensure compliance of all labor laws, insurance, workman compensation act & all applicable statutory rules and regulations for subject work.
- 6.** The successful bidder must fulfill all the safety regulations and take all necessary safety measures to avoid any hazard and shall be strictly followed by persons deployed by the successful bidder for the job. To ensure safety regulations, instruction and directives given by GMDC safety officer shall be final and binding to the successful Bidder.
- 7.** The successful bidder shall be solely responsible for any accident to his/their workers and should adhere to all rules and regulations as per labor laws of Government and other statutory authority. The successful bidder shall ensure that all persons employed by the successful bidder use personal protective equipments.
- 8.** The successful bidder shall keep GMDC indemnified from all liabilities arising out of his action in pursuance of this contract.
- 9.** All persons deployed by the successful bidder shall maintain due discipline and GMDC reserves the right to take disciplinary action if required.
- 10.** The Successful Bidder shall keep one or more nominated competent person(s) as a Supervisor in each area of work to supervise quality of work and effective progress of work as scheduled and report submission to EIC of GMDC
- 11.** All the tools & tackles required to carry out the work shall be in successful bidder's scope.
- 12.** All works related to hoists, Cranes, and other lifting tools, etc. for lifting, shifting of the materials is in successful bidder's scope. The successful bidder has to arrange all resources for the same. Any reason for delay of the work for the want of the resources shall not be considered.
- 13.** For the items, which are not supplied, or the works, which are not being carried out by the successful bidder, as the case may be, shall be completed at the risk and cost of the successful bidder.
- 14.** The successful bidder must be acquainted with all Management Information System and has to submit work plan and Bar Chart immediately on receipt of work order, and adherence shall be strictly monitored.
- 15.** The successful bidder shall attend morning meeting at any time called by GMDC management and shall apprise day to day work progress carried out during the work.

**CHAPTER – VI**  
**TERMS AND CONDITIONS OF THE TENDER**

**Gujarat Mineral Development GMDC Ltd., (herein after referred to as GMDC) proposes to carry out** the works of Complete Design, Supply, Erection & Commissioning of Outdoor Ring Main Units Panels with 11KV VCB, 8 KM long 11KV OH lines, lighting transformers, chemical earthing and shifting of 1 nos.315KVA 11/.433 KV transformer and its LT MCC at PANANDHRO LIGNITE PROJECT, VILL. PANANDHRO, TAL. LAKHPAT, DIST. KUTCH, GUJARAT.

**1. EARNEST MONEY DEPOSIT:**

A non-interest bearing Earnest Money Deposit of **Rs.1, 15,000.00 (Rupees One Lakh Fifteen Thousand Only) in Form** shall be paid along with the tender, enclosed with Technical Bid documents in seal cover super scribed "TECHNICAL BID", in form of Demand Draft/ Pay order in favour of GMDC Ltd. payable at Ahmedabad from banks approved by Govt. of Gujarat from time to time (except Co-Operative bank)

Or

Bank Guarantee issued by banks approved by Govt. of Gujarat from time to time (except Co-Operative bank) in the form and manner acceptable to the GMDC valid for a period of not less than 6 (six) months from the date of opening of preliminary bid.

*Relaxation in terms of submission of EMD shall be given to the bidder who is holding valid Certificate issued under the MSME Act, 2006 on the date of submission of Bid.*

- 1.2 Any tender submitted without Earnest Money Deposit in the desired form or inadequate amount of EMD shall be summarily rejected and no claim shall be entertained on such rejected tenders.
- 1.3 List of the banks approved by Govt. of Gujarat is as per **Annexure- I**.
- 1.4 EMD will be refunded to unsuccessful bidders within 30 days of determination of the L1 Bidder and on acceptance of LOI by L1 bidder.
- 1.5 The EMD of the Successful Bidder shall either be adjusted as a part of security deposit, if desired by the Successful Bidder or shall be refunded on receipt of security deposit amount as stipulated in clause No.2 of the Chapter-VI.
- 1.6 In case of non-conformity, irresponsible behavior and fluctuation on the matter discussed/negotiated with the Successful Bidder regarding the contract work before issuing the LOI, the amount of the EMD paid will be forfeited and necessary further actions including black listing of the Successful Bidder may be initiated as may be deemed fit by the GMDC.

**2. SECURITY DEPOSIT:**

Security Deposit is measure of liquidated damages sustained by GMDC for not performing the contract satisfactorily. Nothing herein above shall disentitle GMDC from claiming the damages actually sustained in the value over and above the Security Deposit.

- 2.1 The successful bidder shall pay security deposit in the following manner within 15 days from the date of acceptance of LOI:

10% of the total contract value excluding goods and service tax at the time of award of the work before commencement of the contract work in form of a Crossed Demand Draft in favour of GMDC payable at Ahmedabad from time to time except Co-Operative Bank or a Bank Guarantee issued by

the Banks approved by Govt. of Gujarat having validity beyond the six months of the contract period (except Co- operative Bank) in the form and manner acceptable to GMDC.

In case of Bank Guarantee, before one month of its expiry, the same shall have to be renewed from time to time as per requirement of GMDC. The final renewal of Bank Guarantee should make valid till six months after expiry of contract period.

- 2.2 It shall be refunded to the Successful bidder, within a period of six months after satisfactory completion of the work. The Successful bidder shall obtain "No Dues Certificate" to this effect from the General Manager [Project] / Project-in-Charge and shall submit the same to the General Manager [HR/Power] at HO, who after verification of the fact will arrange for refund of SD. The successful bidder will also have to submit "NO DEMAND CERTIFICATE" along with the above mentioned certificate as per the Performa given in the tender document.
- 2.3 The SD deposited by the Successful bidder will be forfeited if the successful bidder fails to commence the work within 25 days of acceptance of Letter of Intent by the Successful bidder.
- 2.4 Security deposit shall not bear any interest under any circumstances. Security Deposit is a measure of liquidated Damages sustained by GMDC for not providing the manpower, tools and tackles as required by as per the contract.
- 2.5 GMDC reserves the right to recover the charges or the liquidated damages from the Security Deposit in the following circumstances-
  - A. If the Successful Bidder or its employees causes any damage or destroy any property belonging to GMDC.
  - B. The shortfall amount of all compensations, liquidated damages and other sums of money payable by the Successful Bidder or recoveries to be made under the terms of this contract which is due but not paid by the Successful Bidder in full, etc.
  - C. Any other dues on account of statutory compliance.

### **3. PAYMENT**

The Successful Bidder shall submit invoice for the work executed and Material supplied within 7 days of completion of the works. Payment shall be processed after execution of the contract agreement only.

- A. Invoice shall be submitted to the office of General Manager (Project) with following documents:
  - i. Details of Work carried out with work measurement sheet and due approval from GMDC EIC. Details of Material supplied with GMDC Gate Security certification, GMDC store certification & GMDC EIC inspection certificate.
  - ii. Drawings, Layout, and Test Certificates, Approval / Compliances Certificates from DGSM, Electrical Inspector etc
  - iii. MOM held with GMDC

Note:

- (1) Successful Bidder has to make main gate entry on the supplied material and material is to be credited to main store only.
  - (2) Only after verification from GMDC, the materials shall be issued to the Successful Bidder through local Material Issue Ticket.
  - (3) Bills for works and Spares, consumables, equipment and Material with Price bid & Sr. No to be put up for verification and tracking
- B. Compliance of all law relevant with the work carried out by Successful Bidder such as Labour, and Factories Act etc, Mines Act, etc.

C. Payment shall be done only as per actual quantity of work carried out/ material supplied by the Successful Bidder.

#### **4. MODE OF PAYMENT:**

The mode of payment will be by RTGS.

The Running Account bills, submitted at the office of General Manager (Project) will be processed there considering following deductions.

- a) Income tax as per provision of Income Tax Act, and other Taxes (and surcharges) applicable in force from time to time.
- b) Cost of any other services provided / material supplied plus 15% administrative charge, if any, by the GMDC.
- c) Liquidated damages leviable as per clause No.5 of Chapter-VI
- d) Other deductions, if any.
- e) An ad-hoc payment @ 80% of the payable amount arrived after considering above deduction, will be paid by office of the G.M. [Project], within 30 days of submission of the bill along with its details.

The bill shall then be sent to GMDC's Corporate Office at Ahmedabad for verification, auditing and approval. Balance 20% payable amount of Running account bills shall become payable by Project only within two weeks of the receipt of the approved bill from Corporate Office.

#### **5. LIQUIDATED DAMAGES (L.D.):**

- 5.1 If the Successful Bidder fails to start the actual work within 15 days from the date of acceptance of LOI, a liquidated damages @ Rs 10,000/- per day for delay period in starting of the work shall be levied subject to a maximum of 10 % of the total contract value. If the Successful Bidder fails to start work even after 25 days of acceptance of LOI, the GMDC will be free to forfeit the EMD and/or SD, or both the EMD and SD and take action stipulated under Clause No.1 & 2 of Chapter-VI of tender document.
- 5.2 Time and quality is the essence of the contract and successful bidder has to complete the work accordingly. Looking to this, if the delay in completion of the works happens which can be attributed to the Successful Bidder, the LD shall be recovered at the rate of Rs 10,000/- per day for delay period of completion with the maximum sealing limit of 10% of the total contract value.
- 5.3 Incompletion of any work or part of the work found of the contract affecting to the operation and safety of equipments and man power shall be considered non-completion of the work and may lead to liquidated damage.
- 5.4 Under any circumstances GMDC shall not be liable to pay any compensation to the Successful Bidder.
- 5.5 Any delay of starting / completion of work due to want of materials shall also lead to LD as per clause 5.2.
- 5.6 If the delay of getting DGMS, Electrical Inspector final approval occurs but the successful bidder has applied for the same in time, then this delay shall not be considered as delay attributable to the successful bidder. However, the Successful Bidder shall ensure to get the approval / clearance at the earliest. Payment shall be released only after submitting DGMS, Electrical inspector approval/ clearance.

5.7 The GMDC reserves right to terminate the contract and get the balance work completed at the cost and risk of the Successful bidder if the work shall not be carried out upto the satisfaction of GMDC and not completed in time.

**5.8 The overall cap on total LD for delay in supply and / or works shall be 10% of total contract value.**

## **6. PERFORMANCE GUARANTEE:**

Successful Bidder has to give performance guarantee for

1. Supplied Material and Workmanship for 12 months from the date of completion of work and commissioning.
2. The 10% SD shall also be treated as performance Guarantee for the above specified period in 6.(1) plus 6 More months
3. The performance guarantee for the supplied material shall be considered as specified in performance clause mentioned in scope of work. To meet with the requirement of BG for such items beyond the period of clause 6. (1)& 6(2) the BG of reduced amount for remaining period and materials shall be submitted prior to release of the main BG submitted against the SD amount.
4. The performance guarantees for all the supplied materials shall be 18 months from date of receipt or 12 months from date of installation of the materials whichever is earlier.
5. The Performance BG / Security Deposit will be returned to Successful bidder after 12 months of the completion of work and commissioning.

## **7. STATUTORY OBLIGATIONS**

- 1) That the Successful Bidder shall get his own License under Contract Labour (Regulation and Abolition) Act, it shall be binding to get the same renewed from time to time and shall maintain all the records as per the act.
- 2) That the Successful Bidder shall be responsible to enroll his employees, deduct, add and deposit in the relevant accounts the contributions as required under the Employees State Insurance Act, 1952 and the Employees Provident Funds and Miscellaneous Provisions Act 1952 and any other enactment's covered under the various applicable labour laws as well as maintain all books of records for the staff and employees deputed by it for this contract such as required under any laws applicable. The Successful Bidder shall also furnish a copy of such statements as documentary proof to the GMDC.
- 3) That if the Successful Bidder is not covered under the Employees State Insurance Act, 1952 then it shall be the duty of the Successful Bidder to take appropriate insurance cover under the Workmen Compensation Act and take Group Personal Accident Policy for all the employees deputed at the premises of the "First Part".
- 4) The Successful Bidder has to issue to the employee's Identity card with their photos and shall also maintain relevant register.
- 5) That the Successful Bidder shall give leave/holiday to its workforce as per the provisions of labour laws applicable.
- 6) That the Successful Bidder would obey with all applicable laws and maintain all such necessary records as necessitated under such enactments.
- 7) Every person deployed by the Successful Bidder in a Project must wear safety gadgets to be provided by the Successful Bidder.
- 8) The Successful Bidder will be required to obtain License from the office of the Labour Commissioner for the required strength of labour, before commencement of work at site and the same shall be maintained updated and valid throughout the currency of the contract.
- 9) If any amount becomes payable by GMDC as a result of any claim or application in terms of the provisions or non-compliance of provision of the any Acts and the Rules and Regulations, By-

laws or the Orders made there under, applicable from time to time, such amounts shall be recoverable from the Successful Bidder for which GMDC will not be responsible for any compensation.

- 10) The Successful Bidder shall also indemnify the GMDC against any claims, compensations, damages, loss, liquidated damages etc. for breach and / or non-fulfillment of the prevailing Rules and Regulations and other statutory provisions in force from time to time and applicable to the work during the currency of contract.
- 11) The Successful Bidder shall comply other statutory provisions of Law.
- 12) The Successful Bidder shall have to follow Mines Act 1952, MMR1961, Mines Rules1955, Mine vocational training rule 1966, Mine Creche rule 1966, DGMS circulars issued from time to time, Explosive rule 2008, Ammonium Nitrate rule 2012, MCR 1960 and MCDR 1988, MCDR 2015, Environment Protection Act, Minimum Wages Act, P.F. Act and related Labour laws applicable and maintain registers, records etc. in prescribed format, under the laws.
- 13) When, any work is performed at night or where daylight is poor or obscured, the successful bidder shall have to provide artificial lights at its own cost, wherever required on high towers. The illumination at the working site should be sufficient to carry out mining operation properly and safely with due approval of General Manager (Project)/ Mines Manager. The lighting standards shall be as prescribed by DGMS.
- 14) Electricity and water shall be provided from existing points by GMDC free of cost. Transportation / transmission shall be in bidder's scope.
- 15) The successful bidder shall be responsible to construct and maintain proper and adequate fencing, lighting guarding and taking necessary safety measures for all works under the contract as may be necessary or guided by the General Manager (Project)/ Mines Manager at their cost.
- 16) Planning and Design shall be approved from the General Manager (Project)/ Mines Manager and certified from Electrical Inspector, DGMS, required under law by the Successful bidder scope.

## **8. LAWS, REGULATIONS AND PERMITS AND RULES MADE THERE UNDER**

8.1 The Successful Bidder shall comply with all applicable laws, ordinances, approved standards, rules and regulations, and shall procure all necessary municipal and governmental Gujarat Mineral Development Corporation Ltd. Permits, licenses and inspection and shall pay all fees and charges in connection with the items covered by the contract. The Successful Bidder shall serve GMDC harmless as a result of any in factions thereof. Successful Bidder will be solely liable for all non-compliances.

8.2 The following are some of the major Government of India Acts and Regulations to be complied with by the Successful Bidder. The List is illustrative and not exhaustive.

8.2.1 The Indian Mines Act of 1952 and other allied laws relating to Mining.

8.2.2 The Electricity Act, 2003 and rules made there under

8.2.3 The Minimum Wages Act, 1948

8.2.4 The Employees Compensation Act 1923 and Amendment Act 2010

8.2.5 The Payment of Wages Act 1936 and Amendment Act 2012

8.2.6 Payment of Bonus Act 1965 and Amended up to date

8.2.7 Contract Labour Regulations& Abolition Act 1970

8.2.8 Interstate Migrant Workmen (Regulations) Act 1979

## **9. NOTICE**

Written notice shall be deemed to have been duly served if delivered to the individual or to Successful Bidder or to the Signing Authority of the GMDC from whom it is intended, or if delivered at or sent by mail or post, to the last business address known to him who gives the notice.

## **10. BANKRUPTCY ETC.**

If the Successful Bidder commits an act of Bankruptcy or goes into liquidation except for construction purposes, or if its business is carried on by a receiver, such receiver, liquidator or any person in whom the contract may become vested shall forthwith give notice thereof in writing to GMDC and in reasonable time during which he shall take all reasonable steps to prevent stoppage of performance of the contract, have the option of carrying out the contract subject to his or their providing such guarantees as may be required by GMDC but not exceeding the value of the work for the time being remaining unexecuted.

The event of stoppage of performance under the contract, the period of option under this clause shall be decided by GMDC considering the situation, provided that the above option is not exercised, GMDC may terminate the contract by serving notice in writing to the Successful Bidder. The power and provision so reserved to GMDC on taking of the work out of the Successful Bidder's hands shall apply as far as they may be when the contract is so terminated.

## **11. CANVASSING NOT PERMITTED**

- 11.1 Bidder should not canvass their offer personally or otherwise by approaching the Chairman or the Member of GMDC. If any Bidder wants to make any representation regarding his offer, he should write to the General Manager (LP), if he desires, but personal and oral representations are not permitted.
- 11.2 In spite of the above clear instructions, any Bidder is found to canvass his offer or against his competitor's offer through personal approach to the competent authority or the officials of GMDC, their offer will be rejected without assigning any reason and the firm even is black listed.

## **12. TERMINATION OF CONTRACT**

If at any time during the currency of this contract, if any breach occurs due to the reasons attributed to the Successful Bidder, GMDC shall be at liberty to terminate this contract without assigning any reasons, whatsoever, for such termination and any losses and/or damages occurring due to such termination shall be borne by the Successful Bidder. GMDC shall be entitled to forfeit Security deposits as Liquidated damages.

## **13. DISPUTE RESOLUTION AND ARBITRATION**

All questions, disputes, differences whatsoever which may at any time arises between the parties to this contract in connection with the contract or any matter arising out of or in relation thereto, shall be referred to Sole Arbitrator as per the provisions of Arbitration and Conciliation Act, 1996 and subsequent amendment thereto and the venue of arbitration proceedings shall be at Ahmedabad only.

## **14. GOVERNING LAW AND JURISDICTION**

### **GOVERNING LAW:**

This Tender and subsequent Contract shall be construed and interpreted in accordance with and governed by the laws of India.

**JURISDICTION:**

The matter related to any dispute or difference arising out of this Tender and subsequent contract shall be subject to the exclusive jurisdiction of Court at Ahmedabad only.

**15. PROVISIONS RELATED TO INSURANCE:**

- b. Insurance –The Successful Bidder shall take full responsibility to take all precautions to prevent loss or damage to the works or part thereof for any reasons whatsoever (except for reasons which are beyond control of the Successful Bidder or act of God, e.g. flood, riots, war, earthquake, etc.) and shall at his own cost, repair and make good the loss/damage to the work so that on completion, the work shall be in good order and condition and in conformity with the requirements of the Contract and instructions of the Project Authority, if any.
- c. The Successful Bidder shall, at all times during the pendency of the Contract, indemnify the GMDC against all claims, damages or compensation under the provisions of the Employee's Compensation Act and shall take insurance policy covering all risk, claims, damages or compensation payable under the Employee's Compensation Act or under any other law relating thereto.
- d. The Successful Bidder shall ensure that the insurance policy/policies are kept alive till full expiry of the Contract by timely payment of premiums and shall not be cancelled without the approval of the GMDC. The cost of premiums shall be borne by the Successful Bidder and it shall be deemed to have been included in the tendered rate.
- e. In the event of the Successful Bidder's failure to effect or to keep in force the insurance referred to above or any other insurance which the Successful Bidder is required to effect under the terms of the Contract, the GMDC may effect and keep in force any such insurance and pay such premium/premiums as may be necessary for that purpose from time to time and recover the amount thus paid from any moneys due by the Successful Bidder.

**16. TRAVELING, LIVING AND OTHER EXPENSES:**

The Contract price shall include all salaries, and wages, all traveling time and expenses, boarding and lodging allowance and medical expenses of all personnel furnished by the Successful Bidder and all payments which the Successful Bidder may have to make in relation to the work, to the labourers and other personnel employed. Further the contract price shall include all taxes and liability in respect of Employee's Compensation Act, Employee State Insurance Act and Employees Provident Fund Act, etc.

**17. MEASUREMENTS**

The complete execution of the work with supply of Materials and as per scope of work shall be counted for payment. If the work or supply is not completed as per scope of work or supply and any part work or supply is done, then the part work shall not be counted for payment.

Successful Bidder has to submit the material account statement along with the work measurement sheet. Any Invoice without material account statement shall not be processed, this may please be noted.

All the supplied credited materials as per the Schedule B & C shall be the property of GMDC.

All the materials to be supplied as per the scope of works and or supply shall be credited to GMDC main stores only. For work execution the same shall be issued from the main store to the Successful Bidder/ representative of the Successful Bidder.

The material which is required to carry out the works and in the scope of Successful Bidder shall be estimated and credited to respective department of GMDC separately and the same shall be certified and issued to the Successful Bidder during the execution of work. The Successful Bidder shall ensure sufficient availability of the consumables to avoid any delay in completion of the work.

**18. NON FULFILMENT OF TERMS AND CONDITION OF THE CONTRACT:**

- 18.1 If the Successful Bidder fails to carry out the work as per terms and conditions of the contract to the satisfaction of the GMDC, GMDC shall be entitled to forfeit the security deposit paid by the Successful Bidder. This however, shall not absolve the Successful Bidder from his obligation to fulfill the contract. In such event, the GMDC shall have a right to complete and / or to get the work completed at the cost & risk of the Successful Bidder and the Successful Bidder shall be responsible to pay such cost incurred by the GMDC to complete the work and / or to get the work completed.
- 18.2 Likewise, if the Successful Bidder does not fulfill the terms and conditions of the contract and does not carry out the work up to the entire satisfaction of GMDC, GMDC has the right to forthwith terminate the contract at its sole discretion, without assigning any reason, under such events, the GMDC shall be entitled to forfeit the security deposit paid by the Successful Bidder and the GMDC shall have a right to complete the work and / or to get the work completed at the risk and cost of the Successful Bidder.
- 18.3 For any reasons, if it is required, the GMDC reserves right to cancel, terminate, amend and / or alter the contract and / or bifurcate and / or reduce the contract work at any time without giving any notice or reason to the Successful Bidder and without incurring any responsibility. For such cases, Successful Bidder shall have to take away his labour, tools, tackles, machinery, equipment etc. and shall leave the site at once or shall have to carry out the instructions of the GMDC.

**19. ACCIDENT ETC. AND RESPONSIBILITIES OF BIDDER:**

- 19.1 The entire responsibility on account of any accidents, damage or personal injury which may occurred to any of the Successful Bidder's vehicles/ equipments or his/its employees or any outside party shall be exclusively that of the Successful Bidder and no claim whatsoever shall be entertain by the GMDC on this account. The Successful Bidder shall keep the GMDC indemnified from all the consequence.
- 19.2 In the event of any breakdown or accident during the course of any work, the Successful Bidder shall notify the facts to the Project Authority or any other officer immediately present there of such incidence and shall simultaneously make adequate remedial arrangements on his/its own cost and risk and as per the instruction of the Project Authority.
- 19.3 The Successful Bidder shall pay all claims, damages and compensation with cost arising out of or resulting there from to the third party(s) and in case the GMDC would be required to face any proceedings all to pay any amount on the aforesaid account, it shall be deemed to have been discharged on behalf of the Successful Bidder, the same amount shall be recovered from the Successful Bidder bill or dues pending towards GMDC.

## **20. GENERAL CONDITONS**

- 20.1 All the persons of the Successful Bidder engaged inside the power project area must wear Helmet and Shoes and other PPEs. As and when required other personal protective wears shall also be provided to them by Successful Bidder.
- 20.2 The Successful Bidder shall take adequate statutorily prescribed insurance cover for all men and machinery engaged by him/it for performance of the work at site. Any insurance claim brought against the GMDC by an individual or by customers or by any such other persons who suffered damage due to negligence of the Successful Bidder or his employees, the same shall be settled by the Successful Bidder at his cost.
- 20.3 The Successful Bidder has to ensure supervision of the work through duly qualified and competent persons and also has to make sure that a responsible Manager/ Engineer full time available on work site to whom GMDC can issue the instruction and who can fulfill such instructions. Successful Bidder shall appoint qualified Manpower.
- 20.4 The Successful Bidder shall not change the constitution of the firm/name during the currency of the contract without prior approval of GMDC. Upon such change in constitution and/or name, Supplementary agreement to that effect shall be executed and if the SD is submitted in form of BG/FD than fresh BG in the name and/or constitution shall be submitted failing which necessary action as deemed fit by GMDC shall be taken.
- 20.5 All the staff members of the Successful Bidder shall carry Photo Identity Card while on duty.
- 20.6 The Successful Bidder shall provide necessary arrangement for transportation of manpower from Township or other locations to work site with all the required safety provisions/devices enforced by statutory authority and other applicable laws/rules or as directed by GMDC authority.
- 20.7 All the equipment to be deployed by the Successful Bidder must be maintained in proper working order and be fitted with all the required safety devices enforced by statutory authority e.g. Audio Visual Alarms, fire extinguisher etc.
- 20.8 In case of any Central/State Government directives regarding mines and/ or electrical works execution of work related thereto, the same shall have to be strictly adhered to and binding upon the Successful Bidder for implementation, for which GMDC will not be responsible for any compensation.
- 20.9 The Successful Bidder shall abide by the provision of the Motor Vehicle Act for machinery. Any consequences arising out of non-compliance of said Provisions will be at the Successful Bidder sole risk and cost, for which GMDC will not be responsible for any compensation.
- 20.10 To meet the exigencies arising out of natural calamities or disaster or during any emergency, GMDC reserves the right to take away any of the equipments/machineries deployed at the project site with a mutually consented rate. A separate agreement will be made to this effect.
- 20.11 MD-GMDC is authorized to take suitable decision and action in case of requirement to amend/alter the contract conditions/quantities of the works/ extension of the contract period/allotment of additional works/revision of the rates of the work etc. if necessary in the interest of GMDC.

## **21. SUB-CONTRACT:**

The Successful Bidder shall be allowed to assign any part of the work / sub-contract any portion of this work. However, bidder has to declare in the bid itself with the name & part of work proposed

for sub-contracting purpose. No bidder shall be allowed any sub-contracting if it is not being declared in the bid and without prior written consent of GMDC.

## **22. COMPLETION OF WORK:**

22.1 Upon the Successful Bidder fulfilling the entirety of its obligations under the Contract to the satisfaction of GMDC and subject to terms and conditions of the Contract, it shall become eligible to apply for a Completion Certificate. The General Manger (Project) of GMDC shall formally issue the Completion Certificate, after verifying from the completion documents and satisfying himself that the Works under the Contract have been completed in accordance with all the provisions of this Contract. The Successful Bidder, after obtaining the Completion Certificate shall become eligible to present the final bill for the Works executed by it under the Contract.

22.2 Upon completion of Works under the Contract and before the application for the Completion Certificate, the Successful Bidder shall clear the project of GMDC of all rubbish, dirt, structures, scrap, oily rags etc. Failure to clear the project may constrain GMDC to clear the said site at the risk and cost of the Successful Bidder.

22.3 The Successful Bidder shall provide GMDC with any and all documents/records/certificates/proofs that may be demanded before issuance of Completion Certificate.

## **23. FORE CLOSURE:**

23.1 In case of any necessity arising due to local working conditions, land/lease issues, major deviation in the geological data/information, unexpected sliding of the benches or dumps or any unforeseen reason not in the control of the GMDC or of the Successful Bidder, Committee comprising of representative of GMDC, Successful Bidder and Outside Expert from Technical and Financial background shall be constituted and Committee will look into the reasons/causes and analyze the conditions as to whether the work awarded is feasible to continue with the existing terms and conditions of the contract or any other available option or to Fore Close the contract in the interest of both the GMDC and the Successful Bidder.

23.2 If after study of the prevailing conditions of the contract under execution, committee recommends to Fore Close the contract keeping in view the financial implication to both the GMDC and Successful Bidder, guideline/Modality of the Fore Closure of the contract shall be decided by the committee considering the work executed and unexecuted, period of the contract completed and balance period of the contract, value of the work executed and value of the work unexecuted etc.

## **24. FORCE MAJEURE**

24.1 Force majeure is herein defined as any cause which is beyond the control of the Successful Bidder or the Corporation as the case may be which they could not foresee or with a reasonable amount of diligence could not have foreseen and which substantially affect the performance of the contract, such as:

- i. Natural phenomena such as flood, draughts Cyclone, earthquake and epidemics, declaration of war.
- ii. Acts of any government, including but not limited to war, declared or undeclared priorities, quantities, embargoes, providing either party shall within fifteen (15) days from the occurrence of such a cause notify the other in writing of such cases.

24.2 The Successful Bidder will advise, in the event of his having resort to this clause by a registered letter duly certified by the statutory authorities, the beginning and end of the cause of delay, within fifteen days of the occurrence and cessation of such Force Majeure condition. In the event

of delay lasting over two months, if arising out of Force Majeure, the contract may be terminated at the discretion of the GMDC.

- 24.3 For delay arising out of Force Majeure, the Successful Bidder will not claim extension in completion date for a period exceeding the period of delay attributable to the causes of force Majeure and neither company nor the Successful Bidder shall be liable to pay extra costs (like increase in rates, remobilization, advance, idle charges for labour and machinery etc.) provided it is mutually established that the Force Majeure conditions did actually exist.
- 24.4 If any of the Force Majeure conditions exists in the place of operation of the Successful Bidder even at the time of submission of bid, he will categorically specify them in his bid and state whether they have been taken into consideration in their quotations.
- 24.5 The Successful Bidder of the GMDC shall not be liable for delays in performing his obligations resulting from any force majeure cause as referred to and/ or defined above. The date of completion will, subject to hereinafter provided, be extended by a reasonable time given though such cause any occur after Successful Bidder's performance of his obligations has been delayed for other causes.
- 24.6 *In case of force majeure condition, GMDC reserves the right to extend the period of the contract suitably and liquidated damages may be reviewed during the force majeure period. However, in no case, GMDC will pay any compensation towards force majeure period nor any compensation will be paid for idle machinery and manpower.*

## **25. CHANGE IN LAW:**

Nothing in this contract shall entitle the Bidder to claim additional payment against the work executed or being executed or likely to be executed upon the change in law by Government of India or State of Gujarat as regards any taxes, liabilities arising out of work contract, judgments of court etc. That nothing under the said laws shall create any additional liability on the GMDC over and above that set out herein. That unforeseen circumstances in the working of the said contract shall not entitle Bidder to abandon or demand additional payment under a different head not originally mentioned herein and hence nothing except what is contained in the present contract shall constitute binding obligations between parties.

## **26. INTERPRETATION:**

That no communication preceding or following the present tender shall have any bearing on the terms and conditions set out herein. That no contract, promise or obligation shall arise out of the said communication, over and above what is set out herein above. That the terms contained herein constitute the entire bargain between the parties and shall not be interpreted in the light of commercial correspondence between the parties.

**FORM – A****CHECK LIST OF DOCUMENTS ENCLOSED WITH TENDER****TECHNICAL BID**

<b>S. No.</b>	<b>Document</b>	<b>Declaration (Strike out whichever is not applicable)</b>
1.	<b>FORM-A</b> (check list of documents enclosed with tender)	Yes / No
2.	<b>FORM-B</b> (Status of the Bidder)	Yes / No
3.	<b>FORM-C-1</b> (Details of work carried out during the last seven years by the Bidder)	Yes / No
4.	<b>FORM C-2</b> (Details of work carried out should be provided as per FORM C-2 provided in the tender Document)	Yes / No
5.	<b>FORM C-3</b> (Details of Bidder as per the format provided in <b>Form C-3</b> of the Tender Document)	Yes / No
6.	<b>FORM D-</b> No Demand Certificate	Yes / No
7.	Declaration of not Black listed as per the format provided in <b>FORM E</b> of the Tender Document	Yes / No
8.	Undertaking of Genuineness of Document as per format provided in <b>FORM F</b> of the Tender Document	Yes / No
9.	CA Certificate of Net worth, Turnover and Working Capital as per format provided in <b>FORM G</b> of the Tender Document	Yes / No
10.	Undertaking of Indemnity as per format provided in <b>FORM H</b> of the Tender Document.	Yes / No
11.	Declaration of site visit as per format provided in <b>FORM I</b> of the Tender Document.	Yes / No
12.	Declaration of unconditional offer as per format provided in <b>FORM J</b> of the Tender Document.	Yes / No
13.	Declaration regarding unconditional acceptance of all the terms and conditions of the Tender documents per format provided in <b>FORM K</b> of the Tender Document	Yes / No
14.	Power of Authority to sign the documents	Yes / No

**PRICE BID**

<b>1</b>	Online Price bid submission in Form 'AA'	Yes / No
----------	--	----------

**FORM - B**

**Status of the Bidder**

<b>Particulars</b>	<b>Details</b>
<b>Name of the Bidder:</b>	
<b>Address :</b>	
<b>Registered office :</b>	
<b>For correspondence:</b>	
<b>Telephone No.</b>	
<b>Fax No.</b>	
<b>E-mail Address</b>	
<b>Attested copies of Deeds, Articles of association to be enclosed</b>	
<b>Name of person holding power of attorney (Attested copy of power of attorney to be enclosed)</b>	
<b>Names of Partners with their Present and permanent address</b>	
<b>Name of Bankers with full address and Telephone No&amp; Bank Account Details</b>	
<b>PAN of Bidder</b>	
<b>GST Registration No. of Bidder</b>	
<b>PF Registration No.</b>	

**FORM -C-1**

**DETAILS OF WORK CARRIED OUT DURING THE LAST SEVEN YEARS BY THE BIDDER**

(Details to be submitted in line of Experience submitted in Form- C2)

Sr. No.	Description of work with Work place	Name of client with postal address	Period		Quantity awarded	Actual quantity worked	Work experience certificate attached
			From (Date)	To (Date)			
							Yes/No
							Yes/No
							Yes/No
							Yes/No

**\*\*TO BE CERTIFIED BY CHARTERED ACCOUNTANT SHOWING MEMBERSHIP NO/ FIRM REGISTRATION NO.**

**FORM C-2**

**Bidder should submit the details of work carried out during the last seven years by the Bidder in below format in addition to the details submitted in the Form-C-1:**

Bidder	Amount of Single Work Order in Lakhs of INR						
	Year 1 (Period)	Year2 (Period)	Year 3 (Period)	Year 4 (Period)	Year 5 (Period)	Year 6 (Period)	Year 7 (Period)

**\*\*TO BE CERTIFIED BY CHARTERED ACCOUNTANT SHOWING MEMBERSHIP NO/ FIRM REGISTRATION NO.**

**FORM - C-3**

**DETAILS OF BIDDER**

<b>Particulars</b>	
Whether enlisted in other dept., if yes, then furnish the details pertaining to class and the amount qualified to tender	
Was the Bidder or its partners or Directors black listed in past by any Govt. or any other body.	
Details pertaining to the work incomplete, if any	
Details of the litigation, court cases and arbitration either completed or under progress during last 10 years against your company or any partner/proprietor of present company was associated in any capacity.	

**FORM D**  
**(On letter head of the Bidder- to be produced at the time of release of Security Deposit)**

To,  
General Manager (Power)  
Gujarat Mineral Development GMDC Ltd.  
"Khanij Bhavan" 132' Ring road,  
University Ground, Vastrapur,  
Ahmedabad- 380 052

**Name of Works:**

- The Work of \_\_\_\_\_.
- The Work of \_\_\_\_\_.
- The Work of \_\_\_\_\_.

**NO DEMAND CERTIFICATE**

We \_\_\_\_\_ hereby certify that we have received the payment of all our bills in full and final settlement of our claims in respect of Tender No. \_\_\_\_\_ for all the works as mentioned above at \_\_\_\_\_.

The payment received by us is in full and final settlement of our all the claims towards the amount with respect to the work under reference.

Hence, we do not have any outstanding claim against GMDC for the work under reference. We shall not claim any further amount from GMDC in future, either one way or the other.

This certificate is given without any prejudice and in the presence of two witnesses.

**Signature & Stamp of the Bidder**

**Date: -**

**Signature & Address of**

**Witnesses** 1. \_\_\_\_\_  
2. \_\_\_\_\_

**FORM E**

**DECLARATION**

(On letter head of the Bidder)

FROM:

DATE:

To,

The General Manager (Power),  
Gujarat Mineral Development GMDC Ltd.,  
"Khanij Bhavan", 132 ft. Ring Road,  
University Ground, Vastrapur,  
Ahmedabad-380015

Dear Sir,

I/we here by solemnly declare that any of our Directors or Partners, jointly or severally and/or individually or our firm have not been black listed by GMDC or the Central Govt. or the State Govt. or their undertakings.

I/we here by further declare that, if the declaration is found untrue, the GMDC shall be entitled to take any action against us severally and/or individually or our firm/GMDC in this regard in any manner that may be deemed fit by GMDC.

Yours faithfully,

\_\_\_\_\_  
Signature and Stamp of the Bidder

**FORM F**

**(FORMAT FOR AFFIDAVIT)**

**A F F I D A V I T  
UNDERTAKING REGARDING GENUINNESS OF DOCUMENTS  
(On Non-Judicial Stamp Paper of RS 300/-)**

I/We, \_\_\_\_\_, Partner/Director/Legal Attorney/ Accredited Representative of  
M/s. \_\_\_\_\_ solemnly declare that:

1. I/We are submitting Tender for the work "11KV Electrical works with supply of material at Panandhro Lignite Project" against Tender No: GMDC /PD/PAN/ELECT/31/2021-22
2. None of the Partners/Directors of our firm/GMDC is relative of employee of GMDC.
3. All information furnished by us in respect of fulfillment of eligibility criteria and qualification information of this Tender is complete, correct and true.
4. All documents/credentials submitted along with this Tender are genuine, authentic, true and valid.
5. If it is found at any point of time that our documents are not genuine then in that case our tender will be rejected, earnest money deposited by us will be forfeited and we will be debarred from participating in further/future GMDC tenders and/or any action as deemed fit by GMDC may be taken against us, including termination of the contract, forfeiture of all dues including Earnest Money / Security deposit and banning/delisting of our entity and all related persons etc.

**SIGNATURE OF THE BIDDER  
WITH SEAL**

Dated .....

**FORM G**

**CERTIFICATE OF NETWORTH AND TURNOVER**

On the basis of the **audited books of accounts** produced before us by M/s.\_\_\_\_\_, we certify that as per the books of account Net worth and Turn Over of the firm M/s \_\_\_\_\_ are as under:

1. Net Worth= Rs.\_\_\_\_\_ as on 31/03/2021.
  
2. Turn Over = Rs.\_\_\_\_\_ for the Year 2018-19.  
Rs.\_\_\_\_\_ for the Year 2019-20.  
Rs.\_\_\_\_\_ for the Year 2020-21.  
  
Average Turnover of Rs.\_\_\_\_\_

**TO BE CERTIFIED BY CHARTERED ACCOUNTANT SHOWING MEMBERSHIP NO/ FIRM REGISTRATION NO.**

**FORM H**

**UNDERTAKING OF INDEMNITY**  
(On Letter head of the Bidder)

To,

The General Manager (Power)  
Gujarat Mineral Development Corporation Ltd.  
Khanij Bhavan  
132' Ring Road, University Ground,  
Vastrapur,  
Ahmedabad.

Dear Sir,

We M/s. ----- hereby undertake that, we shall at all times, indemnify and keep indemnified that GMDC Limited from any and all liability for damages resulting from or arising out of or in any way connected with the operations covered by the Tender No. \_\_\_\_\_. We shall be responsible for all risk arising in connection with or on account of the operations covered by the contract covered by the above tender and shall make good all losses and damages arising there from. In case, the GMDC Limited shall incur any cost or expense or suffer any loss on account of any claim demand or course of action brought against us and arising out of the operations covered by the Bidder/tender, the GMDC Limited shall have the power (without being bound to do so) to define, contest or compromise any such claim demand or cause of action. Any amount that may become payable by GMDC Limited and any cost expense etc. that may be incurred by the GMDC Limited in this behalf, shall also be recoverable from us, without prejudice to your other rights.

Yours faithfully,

For -----

(Signature & Stamp of the Bidder)

**FORM I**

**DECLARATION ABOUT THE SITE VISIT**  
(On letter head of the Bidder)

**Name of Works:**

- The Work of \_\_\_\_\_.
- The Work of \_\_\_\_\_.

We \_\_\_\_\_ hereby certify that we have fully understood the site condition in respect of Tender No. \_\_\_\_ for all the works mentioned above at \_\_\_\_\_. We have obtained all relevant details, information, data, existing working conditions, existing industrial environment etc. We have also studied the working conditions as proposed in the tender and availability of power supply, water supply, man power, machineries, transportation facility etc.

We hereby agree and undertake not to raise any dispute and/or objection at any stage on any ground whatsoever, during the currency of the contract if awarded to us.

**SIGNATURE OF THE BIDDER WITH SEAL.**

Dated .....

**FORM J**

**DECLARATION OF UNCONDITIONAL OFFER**  
(On letter head of the Bidder)

We \_\_\_\_\_ hereby declare that we have not put any condition in our offer with respect to Tender No. \_\_\_\_\_,

**SIGNATURE OF THE BIDDER WITH SEAL.**

Dated .....

**FORM K**

**Declaration regarding unconditional acceptance of all the terms and conditions of the Tender document**

We \_\_\_\_\_ hereby declare that we accept all the terms and conditions, including Annexure, Corrigendum if any, as specified in the Tender Document No. \_\_\_\_\_ unconditionally.

**SIGNATURE OF THE BIDDER WITH SEAL.**

Dated .....

**FORM-AA****PRICE BID FORM – AA (To be submitted online)****Note:**

1. Quoted Price shall be inclusive of all other Taxes and exclusive of GST.
2. There shall be no Escalation on firm rate of contract and shall remain valid for the entire period.
3. It is mandatory to quote rate for all the items mentioned in the price bid. Bidders who won't quote rate for any of the item(s) shall be rejected.

Sr. No.	Description	UOM	Quantity	Supply Rate/ unit	Total supply price (Rs)	Erection and Commissioning charge including Civil work, labour, supervision, etc per unit	Erection and Commissioning charge including Civil work, labour, supervision, etc	Total cost
			A	B (Rs)	C=AxB (Rs)	D (Rs)	E=AxD (Rs)	F=C+E (Rs)
1	11 KV (1+4) way outdoor 630Amp RMU panel with 800Amp 5nos. Draw out type VCB	Lot	1					
2	11 KV (1+1) way outdoor 630Amp RMU panels with 1 nos. Draw out type 630amp VCB each	Nos.	5					
3	Chemical Earthing Pit with 3mtrx70sq.m Earthing	Nos.	56					
4	25KVA lighting transformer 3 Phase 440V/230V AC phase to phase volts with LV side Grounded Neutral, 50Hz	Nos.	5					

5	2pole structure with 200A Air Break Switch with lightening arresters	Nos.	12					
6	11KV 3 pole OH line (With Poles, Insulators, 50sqmm OH conductors , arms, Tie, Support, etc)	km	8					
7	Disconnection, Dismantling, shifting and Assembling and erection and Tasting, commissioning of existing one 315KVA transformer along with its LT MCC including construction of 1 room building of 10 feet X 12 feet Brick-cement wall with asbestos sheet roof. 1door, 2 window with natural ventilation	Lot	1	NA	NA			
8	Detailed project report preparation, design, plan including the open mines route and getting approval from the statutory authorities like Electrical Inspector, Directorate General of mines safety (DGMS), etc	PKG	1	NA	NA	NA	NA	
Grand Total (Rs) Excluding GST				NA	NA	NA	NA	

**Rate inclusive of all Taxes except GST**

**Name of the Bidder:**

**Address & Contact Details of the Bidder:**

**Signature of the bidder with Seal and Date**

**FORMAT OF BANK GUARANTEE FOR EARNEST MONEY DEPOSIT (EMD)**

(On Non-Judicial Stamp paper to be submitted along with submission of bids)

..... (Name of the Bank)

IFSC of the Bank.....

Address.....

Guarantee No.....

A/C Messrs..... (Name of Bidder)

Date of Expiry.....

Limit to liability (currency & amount).....

Invitation for Tender No..... Dated..... ( bidding document )

For..... (Name of Facilities)

**Subject:** Earnest Money Deposit Bank Guarantee.

Date.....20

To,

General Manger (Power),  
Gujarat Mineral Development Corporation Ltd.  
132 Ft Ring Road,  
Near University Ground  
Vastrapur,  
Ahmedabad.

Dear Sir,

In consideration of Gujarat Mineral Development Corporation (hereinafter called "GMDC") which expression shall unless repugnant to the subject of context include his successors and assigns having agreed to exempt M/s..... (Herein after called "Bidder") from demand under the terms and conditions of "Technical Bid Document" (hereinafter called the said "Bidding Document") issued by the GMDC vide Tender No. \_\_\_\_\_ for the work \_\_\_\_\_

(Name of the facilities) from Earnest Money Deposit (EMD) of Bid for the due fulfillment by the Bidder of the terms and conditions contained in the said Bidding Document on production of Bank Guarantee for INR \_\_\_\_\_ ( \_\_\_\_\_ only ) ( figure in words).

1. We the \_\_\_\_\_ ( Name of Bank ) hereinafter referred to as "Bank" having our registered office at \_\_\_\_\_ ( address of Bank ) do hereby undertake and agree to indemnify and keep indemnified GMDC to extent of INR \_\_\_\_\_ ( \_\_\_\_\_ only ) ( figures in words ) against any losses, damage cost, charges and expenses caused to or suffered by or that may be caused or suffered by GMDC by reason of any breach or breaches by the Bidder of any of the terms and conditions contained in the said Bidding Document and unconditionally pay the amount claimed by GMDC on demand and without demur to the extent aforesaid.
2. We \_\_\_\_\_ (Name of Bank) do hereby undertake to pay the amounts due and payable under the guarantee without any demur merely on a demand by you stating that the amount claimed is due by way of loss or damage caused to or would be caused or suffered by you by reason of any breach by the said Bidder of any of the terms or conditions contained in the said Bidding Document by reason of the Bidder's failure to fulfill the conditions of said Bidding Document. Any such demand on the Bank shall be conclusive as regards the amount due and payable by the Bank under this guarantee. However, our liability under this guarantee shall be restricted to an amount not exceeding INR \_\_\_\_\_.
3. We \_\_\_\_\_ ( Name of Bank ) further agree that GMDC shall be the sole judge of and as to whether the Bidder has committed any breach or breaches of terms and conditions of the said Bidding Document and the extent of loss, damages, costs, charges and expenses caused to or suffered by or that may cause to or suffered by GMDC on account hereof to the extent of the Bid Security required to be deposited by the Bidder in respect of the said document and the decision of GMDC that the Bidder has committed such breach or breaches and as to the amount or amounts of loss, damages, costs, charges, and expenses caused to or suffered by or that may be caused to or suffered by GMDC shall be final and binding on us.
4. We \_\_\_\_\_ (Name of Bank) further agree that guarantee herein contained shall remain in full force and effect during the period that would be taken for the performance on the said Bidding Document and that it shall continue to be enforceable till you certify that terms and conditions of the said Bidding Document have been fully and properly carried out by the said Bidder and accordingly discharge the guarantee. Unless a demand or claim under this guaranteed is made on us in writing on or before the (date) \_\_\_\_\_ we shall be discharged from all liability under this guarantee.
5. We \_\_\_\_\_ ( Name of Bank ) further agree with you that you have the fullest liberty without our consent and without affecting in any manner our obligations hereunder to vary any of the terms and conditions of the said Bidding Document or to extend time of performance by the said Bidder from time to time or to postpone for any time or from time to time any of the powers exercisable by you against the said Bidder and to forbear or enforce any of the terms and conditions relating to the said Bidding Document and we shall not be relieved from our liability by reason of any such variation or extension being granted to the said Bidder or for any forbearance act or omission on your part or any indulgence by you to the said Bidder or any such matter or thing whatsoever under the law relating to sureties would but for this provision have effect of so relieving us.

- 6. It shall not be necessary for GMDC to proceed against the Bidder before proceeding against the Bank and the Guarantee herein contained shall be enforceable against the Bank, notwithstanding any security which GMDC may have obtained from the Bidder at this time when proceeding are taken against Bank hereunder be outstanding or unrealized.
- 7. We \_\_\_\_\_ (Name of Bank) further undertake to unconditionally pay the amount claimed by GMDC merely on demand and without demur to the extent aforesaid.
- 8. We, the said Bank lastly undertake not to revoke this guarantee during its currency except with the previous consent of GMDC in writing and agree that any change in the constitution of GMDC or the Bidder or the said Bank shall not discharged our liability hereunder dated \_\_\_\_\_day of \_\_\_\_\_ 20 . \_\_\_\_\_ for \_\_\_\_\_ (Name of Bank)

**Yours faithfully**

**For.....**

**(Name of the Bank)**

**Annexure -I**

**Annexure I.**

Finance Department, Corrigendum No.: EMD/10/2021/7729/DMO

Date: 28/06/2021

A) Guarantees issued by the following banks will be accepted as SD/EMD on permanent basis:

- ❖ All Nationalized Banks

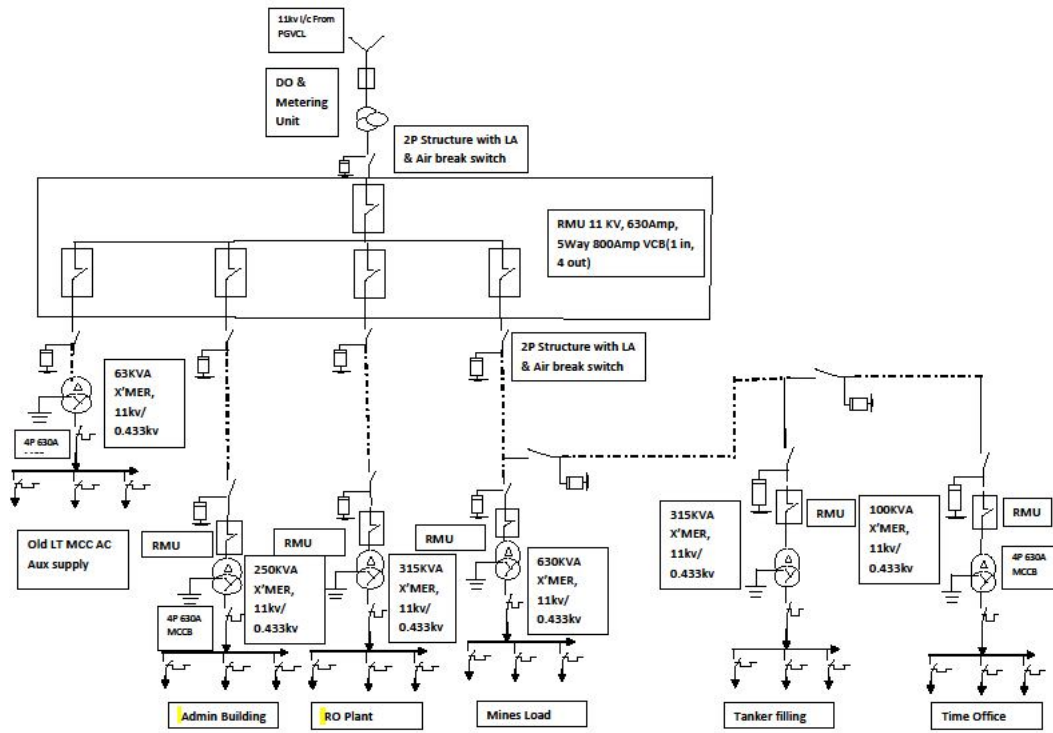
(B) Guarantees issued by the following Banks will be accepted as SD/EMD for the period up to March 31, 2022. The validity cut-off date in the GR is with respect to the date of issue of Bank Guarantee irrespective of the date of termination of Bank Guarantee.

- ❖ The Mehsana Urban Co-operative bank Limited
- ❖ Ahmedabad Mercantile Co-Operative Bank Limited
- ❖ Nutan Nagrik Sahakari Bank Limited
- ❖ Kalupur Commercial Co-Operative Bank Limited
- ❖ RBL Bank
- ❖ Axis Bank
- ❖ ICICI Bank
- ❖ HDFC Bank
- ❖ Kotak Mahindra Bank
- ❖ IndusInd Bank
- ❖ Rajkot Nagarik Sahakari Bank Limited
- ❖ The Gujarat State Co-Operative Bank
- ❖ Sarswat Bank
- ❖ Saurashtra Gramin Bank
- ❖ DCB Bank
- ❖ Tamilnadu Mercantile Bank
- ❖ Ujjivan Small Finance Bank
- ❖ A U Small Finance Bank
- ❖ Federal Bank
- ❖ Equitas Small Finance Bank
- ❖ Bandhan Bank
- ❖ Standard Chartered Bank
- ❖ City Union Bank
- ❖ Yes Bank

All the eligible banks are instructed to collect the original documents/papers of guarantee from the concerned tendering authority.



(S. Chhakhuak)  
Additional Secretary (B)  
Finance Department



Single line

Diagram for reference